

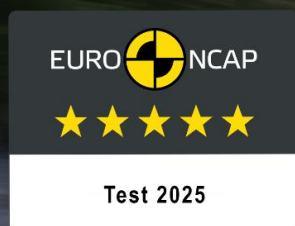


MINI CORPORATE COMMUNICATIONS

Media Information

05 March 2025

Once again Euro NCAP Top Rating: 5 Stars for the fully electric MINI Cooper.



P90590277

The current MINI Cooper Electric models offer maximum safety. This is the result of the latest Euro NCAP crash tests, in which the European Consumer Protection Institute awarded all fully electric MINI Cooper models the top rating. MINI Cooper E, MINI Cooper SE and MINI Cooper JCW E impressed with both passive and active safety.

Company
Bayerische
Motoren Werke
Aktiengesellschaft

Postal address
BMW AG
80788 München

Phone
+49-89-382-50181

Internet
www.bmwgroup.com

Munich. The aim of the Euro NCAP tests is to continuously increase vehicle safety. Both vehicle occupants and other road users should be exposed to an ever-decreasing risk of injury. The long-term intention: "Vision Zero" - that is, zero road fatalities in Europe. Accordingly, the requirements in the tests become stricter year after year. The criteria for the protection of pedestrians

Media Information

Date 05 March 2025

Topic Once again Euro NCAP Top Rating: 5 Stars for all fully electric MINI Cooper models.

Page 2

and cyclists have been tightened, and the test scenarios for both passive and active safety have been expanded.

A top rating of 5 stars is not common in the segment of fully electric MINI Cooper models. Particularly new vehicles in this category often come up short due to price sensitivity - accordingly, the top rating is awarded rather rarely.

The Euro NCAP (European New Car Assessment Programme) ratings are a Europe-wide recognised standard for accident safety and are constantly being adapted. They provide a quickly comprehensible comparison of the safety features of a new vehicle. The award of the top rating of 5 stars is exclusively given to new vehicles that provide excellent impact protection and, in addition, a good range of comprehensive and practical technology for accident avoidance.

Excellent: Top rating from Euro NCAP for the electric MINI Cooper models.

The electrically powered MINI Cooper models impress with their performance, the comfortable spaciousness despite compact dimensions, and the new minimalist design. Thanks to the fully electric drivetrain, the legendary go-kart feeling, and the now certified high level of safety, the fifth generation of the charismatic three-door model is perfectly equipped for the demands of today's urban mobility. The combination of sheer driving fun and a high level of safety underscores the exceptional position of the MINI Cooper Electric models in their segment and at the same time the premium claim of the brand.

In addition to passive and active safety, the top rating in the current Euro NCAP test is also due to effective protection for pedestrians and cyclists, as well as effective systems for accident avoidance. New is the standard pelvic belt pretensioner in all fully electric MINI Cooper models, too.

In the four major safety areas, the MINI models achieve top values for their segment. In terms of **occupant protection**, the three-door model achieves a safety compliance rate of 89% - a value that is usually reserved for larger vehicle classes.

Media Information

Date 05 March 2025

Topic Once again Euro NCAP Top Rating: 5 Stars for all fully electric MINI Cooper models.

Page 3

This also applies to the 87% in **child safety** and the 79% in **safety assistants**. With 77% in **pedestrian protection** a very high level of safety I also achieved for compact cars.

The extensive standard equipment with safety-relevant driver assistance systems also plays a decisive role in the top ratings. The passive safety has been further developed in the form of an integrated safety concept.

As early as December 2024, the new MINI Countryman achieved the top rating of 5 stars, underscoring the brand's claim not only to produce extremely attractive, but also particularly safe vehicles.

MINI Cooper E (WLTP combined: Power consumption 14,8-13,8 kWh/100 km; CO2 emissions 0 g/km; CO2 class A).

MINI Cooper SE (WLTP combined: Power consumption 14,7-14,1 kWh/100 km; CO2 emissions 0 g/km; CO2 class A).

MINI John Cooper Works Electric (WLTP combined: Power consumption 15,5-15,3 kWh/100 km; CO2 emissions 0 g/km; CO2 class A).

All model variants, equipment and technical data described here refer to the German market. Consumption and emission data refer to the German Passenger Car Energy Labelling Regulation (EnVKV).

Media Information

Date 05 March 2025

Topic Once again Euro NCAP Top Rating: 5 Stars for all fully electric MINI Cooper models.

Page 4

Fuel consumption, CO₂ emission figures and power consumption and range were measured using the methods required according to Regulation VO (EC) 2007/715 as amended. They refer to vehicles on the German automotive market. For ranges, the NEDC figures take into account differences in the selected wheel and tyre size, while the WLTP figures take into account the effects of any optional equipment.

All figures have already been calculated based on the new WLTP test cycle. NEDC figures listed have been adjusted to the NEDC measurement method where applicable. WLTP values are used as a basis for the assessment of taxes and other vehicle-related duties which are (also) based on CO₂ emissions and, where applicable, for the purposes of vehicle-specific subsidies. Further information on the WLTP and NEDC measurement procedures is also available at www.bmw.de/wltp.

For further details of the official fuel consumption figures and official specific CO₂ emissions of new cars, please refer to the "Manual on the fuel consumption, CO₂ emissions and power consumption of new cars", available at sales outlets free of charge, from Deutsche Automobil Treuhand GmbH (DAT), Hellmuth-Hirth-Str. 1, 73760 Ostfildern-Scharnhausen and at <https://www.dat.de/co2/>.

In case of queries, please contact:

Corporate Communications

Julian Kisch, Spokesperson Product Communications MINI

Phone: +49-151-601-38072

E-Mail: julian.kisch@mini.com

Micaela Sandstede, Head of Communications MINI

Phone: +49-176-601-61611

E-mail: micaela.sandstede@bmw.de

Media Information

Date 05 March 2025

Topic Once again Euro NCAP Top Rating: 5 Stars for all fully electric MINI Cooper models.

Page 5

The BMW Group

With its four brands BMW, MINI, Rolls-Royce and BMW Motorrad, the BMW Group is the world's leading premium manufacturer of automobiles and motorcycles and also provides premium financial services. The BMW Group production network comprises over 30 production sites worldwide; the company has a global sales net-work in more than 140 countries.

In 2024, the BMW Group sold over 2.45 million passenger vehicles and more than 210,000 motorcycles worldwide. The profit before tax in the financial year 2023 was € 17.1 billion on revenues amounting to € 155.5 billion. As of 31 December 2023, the BMW Group had a workforce of 154,950 employees.

The economic success of the BMW Group has always been based on long-term thinking and responsible action. Sustainability is a key element of the BMW Group's corporate strategy and covers all products from the supply chain and production to the end of their useful life.

www.bmwgroup.com

LinkedIn: <http://www.linkedin.com/company/bmw-group/>

YouTube: <https://www.youtube.com/bmwgroup>

Instagram: <https://www.instagram.com/bmwgroup>

Facebook: <https://www.facebook.com/bmwgroup>

X: <https://www.x.com/bmwgroup>

LinkedIn: <https://www.linkedin.com/company/bmw-group/>