



Media information
6 November 2018

BMW Motorrad Rider Equipment 2019.
Contents

1. New products at a glance.	3.
BMW Motorrad Rider Equipment – 2019 Collection.	
2. Helmets.	4.
Bowler helmet.	
3. Suits.	5.
Roadster suit.	
ProRace suit.	
ProRace Made-to-Measure suit.	
4. Jackets.	7.
AirShell jacket.	
Club Leather jacket	
Club Spezial jacket.	
DownTown jacket.	
RaceFlow jacket.	
5. Trousers.	10.
ClimaProtect trousers.	
Rider trousers.	
6. Boots.	11.
Flow boots.	
ProRace boots.	
Dry sneakers.	



Media information

Date 6 November 2018

Topic

page 2

7. Gloves 13.

ProRace gloves.

Rockster gloves, special version.

8. Functional clothing 14.

HighViz vest.

Protector vest.

Strap-on Protector.

Basic kidney belt.

Pro kidney belt.

9. BMW Motorrad Style Collection 16.

BMW Motorrad Style Motorsport.

BMW Motorrad Style Kit 1.

BMW Motorrad Style Kit 2.

BMW Motorrad Style Kit Leather.



Media information

Date 6 November 2018

Topic

page 3

1. New products at a glance.

BMW Motorrad Rider Equipment - 2019 Collection.

BMW Motorrad rider equipment offers the very highest-quality workmanship for the 2019 motorcycle season. In particular the one-piece **ProRace sports suit**. The **ProRace Made-to-Measure** is a tailor-made item with an extensive range of customisation options and equipment variants that can be adapted to customer preferences using the new online configurator. The **ProRace boots and gloves** can be added for a perfect outfit. Meanwhile the brand new **Roadster suit** is designed as an ideal all-in-one item for riding at speed in sporty style in an upright seating position.

The **Bowler helmet** has an extremely streamlined appearance. Its elaborate details reflect fine craftsmanship, as well as providing a high level of wear comfort. It matches the strictly limited-edition **Club Spezial leather jacket**. Here, the workmanship and details such as the embroidered limited-edition number on the collar meet the very highest standards. The new sporty **RaceFlow** jacket ushers in the summer. With a high proportion of breathable mesh material, it ensures perfect ventilation of the body and arms – even on hot days.

The **Rider trousers** are designed in outdoor style, a perfectly functional, relaxed garment with which to tackle strong winds and tough weather – for both men and women. The **ClimaProtect trousers** are enormously practical. They are waterproof and easy to slip over regular trousers due to long zips at the side – making life much easier for business commuters.

The brand new **Flow boots** are a perfect match here. These extra light short-shaft boots are designed as a perfect companion in hot temperatures: like the new **Dry sneakers**, they go well with motorcycle jeans and summer motorcycle jackets.

The range of protectors has been substantially expanded for the 2019 season. In addition to the **HighViz vest**, the **Strap-on Protector** and the **Basic and Pro kidney belts**, the highlight is the **Protector Vest** with chest and back plate.

The style factor certainly hasn't been neglected either. This is especially reflected in the new **Style collections** based on the motto "Unique Bavarian Engineering", including **leather lifestyle products** and the **Motorsport** collection. The popular **AirShell**, **Club Leather** and **DownTown** jackets are also available, as well as the **Rockster** gloves in new colour variants.

You will find full details of the new products on the pages that follow. Have fun exploring and browsing!



Media information

Date 6 November 2018

Topic

page 4

2. Helmets.

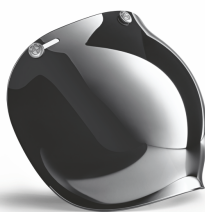
Bowler helmet.



The **Bowler helmet** is an indispensable piece of equipment for the style-conscious rider going into the 2019 season. The **Bowler** helmet is strikingly streamlined for a jet helmet in modern retro style. The outer shell is made of an extremely impact-resistant composite material consisting of glass and carbon fibre reinforced plastic.

Inside the **Bowler helmet** there is an impact-absorbing inner shell made of expanded polystyrene that ensures an excellent fit. The inner lining of the head and cheek padding is made of a comfortable, snug material that has antibacterial and hypo-allergenic properties. The cheek padding in the **Bowler helmet** also ensures excellent aeroacoustics. The edge of the helmet is finished in premium calfskin leather for high-end, long-lasting quality.

The goggle strap holder on the back of the helmet is also made of calfskin leather and is closed by means of stud fastener branded with the BMW logo. For secure closure, the **Bowler helmet** is fitted with the popular continuously adjustable double-D fastener. In its entirety the **Bowler helmet** meets the requirements of the ECE 22-05 standard.



A high-quality range of accessories is available to round off the **Bowler helmet** outfit – ensuring the rider not only looks good but also has everything required for a road trip. There is a choice of five visors, two sunshades and two leather masks with carbon filters. The visors are optionally available in five variants: mirrored, tinted, clear, with a flat sunshield and in bubble design. In addition to the motor racing look for

sporty traditionalists and the popular R nineT tribute, there are three modern retro colour combinations available for the **Bowler helmet**.



In addition to the high-quality helmet pouch included, the product range naturally includes a matching **helmet bag** made of water-repellent polyester fabric for secure transport and storage of the exclusive **Bowler helmet**. The holes integrated at the bottom ensure continuous ventilation, while the soft fleece inner lining protects the helmet from scratches.



Media information

Date 6 November 2018

Topic

page 5

3. Suits.

Roadster suit.

The brand new **Roadster** suit is designed as an ideal all-in-one item for riding at speed in sporty style in an upright seating position. As such, it is ideal for both rush hour and race track. This is due to the generous proportion of stretch material applied in both the jacket and trousers. The two sections are connected by means of an all-round zip, making it a faithful companion for genuine athletes.

In order to expand the wearer's freedom of movement, elastic textile and **leather stretch inserts** were applied extensively **in the sleeve and knee areas**. Here, aramid fibres provide a high level of abrasion protection and enhanced comfort due to extremely stretchable sections. The main section of the **Roadster suit** is made of highly abrasion-resistant cowhide Nappa leather with a thickness of 1.3 mm.

This is supplemented by solid safety features with a removable **NP Pro back protector** as well as sewn-in NP2 shoulder, elbow and knee protectors. The NP2 protector at the hips can also be removed. The **retrofit knee sliders** with velcro patches add a dash of athletic refinement to the sporty look of the **Roadster suit**. The jacket has two useful outside and inside pockets for everyday practicality.

In order to ensure lasting wear comfort, the back area is fitted with 3D spacer fabric for excellent air circulation. **Highly elastic Lycra lining at movement-intensive points** supports an active riding style, as does the collar edge made of neoprene and the sleeve and leg cuffs made of robust Kevlar stretch material. The **Roadster suit** is held together by safety seams made of triple-twined safety yarn with a thickness of 210 Denier finished according to ISO 4916. Available in men's sizes 46 to 60, the **Roadster suit** bears BMW Motorrad branding that is discreet but visible from all sides.





Media information

Date 6 November 2018

Topic

page 6

ProRace suit.



The brand new **ProRace suit** has a wealth of professional features to convey a genuine motor racing feel. The one-piece suit comes as standard in highly abrasion-resistant cowhide Nappa leather.

As would be expected, the **ProRace** offers the entire safety package in uncompromising racing design: the protectors at the shoulders, hips and elbows are sewn in, while the exchangeable sliders at the knees are fitted with an ultra-high-strength velcro fastener. There are three alternatives available in terms of back protection. This highly sensitive part of the body can be safeguarded by means of a protector pouch in the rear section of the **ProRace** suit using the NP Pro back protector. The alternatives are the strap-on protectors **Back Protector** and **Back Protector Vest**.

In addition to safety, a high level of wear comfort is crucial – especially when riding in racing conditions. In the **ProRace** suit, this is ensured by means of numerous stretch inserts that guarantee immense freedom of movement. Likewise, the suit's air circulation is excellent. This is ensured firstly by perforated leather surfaces on the elbows, chest area and upper thighs, and secondly by means of 3D spacer fabric at the back. Moreover, the **ProRace** suit has an aerodynamic rear hump.

The **ProRace** makes no secret of its purpose, even when seen from a distance. Its natural habitat is the racing machine. The standard version is available in the sizes 46 to 60 and the colours black, white and red. As a tailor-made suit, the **ProRace** suit offers a wide range of customisation options that can be configured via external providers.



Media information

Date 6 November 2018

Topic

page 7

ProRace Made-to-Measure suit.

As a premium one-piece suit for sports riders, the new **ProRace** can also be ordered as a completely customised garment. In this exclusive variant offering maximum functionality, the suit goes by the name of **ProRace Made-to-Measure**. The **ProRace Made-to-Measure** suit can be ordered using the configurator through authorised BMW partners or online through the BMW Motorrad licence partner.



The entire **ProRace Made-to-Measure** suit – as the name suggests – is tailor-made for an absolutely perfect fit; at an additional charge it can be ordered in lighter, even more resilient kangaroo leather instead of the standard cowhide Nappa leather. A wide range of different colours are available for the exterior design of the **ProRace Made-to-Measure suit**. Individual logos of teams/sponsors or nicknames can also be applied – in fact virtually anything is possible. Finally, a wide range of BMW Motorrad inscriptions and type designations such as RR, S 1000 XR, BMW M logo etc. round off the purebred racing look of the **ProRace Made-to-Measure** down to the last detail.

Various perforation options are available to do justice to individual comfort preferences. The configurator offers protectors in two different types – standard or Vibram VPod. A chest protector can also be integrated in the **ProRace Made-to-Measure suit**. There are various options for the sliders, too. Meanwhile the aerodynamic hump on the back can optionally be fitted with a TrinkPak if required.



Media information

Date 6 November 2018

Topic

page 8

4. Jackets.

AirShell jacket.

The **AirShell jacket** is highly popular as a functional all-rounder. For the new season there are two colours in the programme on a limited-edition basis: an exclusive red for women and an elegant grey for men. Meanwhile the safety-conscious version in neon continues to be offered as part of the programme.

Designed as a permanent companion throughout the entire season, the **AirShell jacket** offers outstanding versatility. The removable thermal insert keeps the wearer warm in spring and autumn, while the waterproof insert with durable BMW Climate Membrane can be worn either with or without the padded thermal insert. This gives customers protection from cold and rain, as required. To provide relief during peak summer, the large mesh inserts made of highly abrasion-resistant AIRTEX and 3D spacer fabric in the sleeves, front and back ensure for well-ventilated wear comfort.



Removable protectors at the shoulders, elbows and back reflect the excellent safety potential of the **AirShell jacket**, which naturally features a 40 cm connector zip. For conventional handling it has been fitted with two zip pockets on the outside, a waterproof inside pocket and an additional pocket in the insert. Meanwhile there are stud fasteners on the bottom hem as well as velcro flaps at the cuffs and collar to ensure optimum adjustability. The jacket is available for women in sizes 34 to 48 and for men in 46 to 60.



Media information

Date 6 November 2018

Topic

page 9

Club Leather jacket



Redesigned and adapted to the present collection, the **Club Leather** jacket remains one of the finest sporty, modern motorcycle and leisure jackets for BMW fans. It was in 1978 that BMW Motorrad Rider Equipment saw its premiere – and this is the year that is embossed in the sleeves of the **Club Leather** jacket, also appearing as a print on the inner lining. The new abrasion-resistant soft cowhide leather is discreetly structured and has a light, tumbled wax finish. The revised silhouette is highlighted on the shoulders and sleeves by means of coloured leather stripes. These are red in the ladies' version and blue in the men's version.

Underneath them at the shoulders and elbows there are light, pleasant-to-wear protectors, while a back protector can be retrofitted if needed. The **Club Leather** jacket is of course CE-certified. The elaborately finished stand-up collar is closed by means of a stud fastener. With four outside pockets for men (three in the ladies' version) and two inside pockets along with an additional smartphone pocket, the **Club Leather** jacket offers lots of storage space. The connector zip allows the jacket to be combined with the **City** trousers and **City Denim**. The sizes in Regular Fit have been adapted to the latest developments for the 2019 collection: XS (32/34) to 3XL (56/58) for women and S (44/46) to 4XL (68/70) for men.



Club Spezial jacket.

BMW Motorrad Spezial and the option code 719 have acquired legendary status in connection with individual, ex works customisation preferences. The new season sees the ever first rider equipment item to be issued under this designation: the **Club Spezial** jacket.



Media information

Date 6 November 2018

Topic

page 10



A particularly high-quality finish highlights the exclusive nature of this limited-edition garment, of which 1,500 are available for women and men. The number embroidered on a leather bow on the rear collar makes every jacket a unique specimen. In elegant off-white, the **Club Spezial** jacket made of highly abrasion-resistant soft cowhide leather cuts an excellent figure both on and off the motorcycle. As in the **Club Leather** jacket, the leather is enhanced by means of a tumbled look and a light wax finish. The slogan “Option 719” appears on the left elbow in the form of a high-end embroidery.

In the ladies' model, red leather stripes highlight the silhouette; in the men's model these are blue. The respective colour scheme is echoed on the inside lining of the **Club Spezial**, individualised with an exclusive “Option 719” print. Underneath its outer layer, the **Club Spezial** is fitted with pleasant-to-wear protectors at the shoulders and elbows, while a back protector can be retrofitted if required. It goes without saying that the **Club Spezial** is CE-certified. The elaborately finished stand-up collar is closed by means of a stud fastener. All zips and sliders are made of high-quality aged brass.

With four outside pockets for men (three in the ladies' version) and two inside pockets along with an additional smartphone pocket, the **Club Spezial** jacket offers lots of storage space. The connector zip allows the jacket to be combined with the **City** trousers and **City Denim**. The sizes in Regular Fit have been adapted to the latest developments for the new collection: XS (32/34) to 3XL (56/58) for women and S (44/46) to 4XL (68/70) for men.





Media information

Date 6 November 2018

Topic

page 11

DownTown jacket.

Another best-seller is the fashionable **DownTown** jacket. It was developed as a day-to-day companion for motorcycle commuters travelling to the office or to business appointments. The half-length cut in the style of a field jacket makes it easy to slip over business dress – and the jacket cuts a great figure out of the motorbike saddle, too.

The **DownTown** jacket can be combined with modular inner jackets from the BMW Motorrad range as required. For improved wear comfort, the men's model has been fitted with side slits. It has two large, waterproof outside pockets and two inside pockets as well as a multimedia pocket for a telephone or music player. The collar and zip pullers are attached by means of stud fasteners.



In order to ensure good weather protection, the **DownTown** jacket is highly breathable thanks to BMW Climate Membrane and is of course both windproof and waterproof. Despite the jacket's fashionable refinement, safety has certainly not been neglected. The outer layer is made of moderately elastic and abrasion-resistant polyester, with doubling at points that are at risk of impact. The flexible and light NPL protectors at the shoulders and elbows are removable, and an NPL back protector is available for retrofit as required. The CE standard has to be met by law.



The styling and colour of the **DownTown** jacket differs between the men's and women's version. For male motorcyclists it is finished in a discreet black-blue, while their female colleagues appear in a fresh red colour. Using the 40 cm connector zip, the **DownTown** jacket goes perfectly with the black Rider trousers.



Media information

Date 6 November 2018

Topic

page 12

RaceFlow jacket.



The sporty **RaceFlow** is intended for rides on hot summer days, especially through urban areas and over short distances. The focus here is on maximum ventilation and ergonomics. This is possible due to the use of Cordura and large quantities of mesh material. A neat doubling of the material provides protection at neuralgic impact-prone points. In addition there are NPL protectors that offer maximum wear comfort at the shoulders and elbows, as well as a retrofit back protector. All protectors are removable, turning the **RaceFlow** jacket into an excellent companion out of the saddle, too.

Its features include two outside zip-up pockets and two inside pockets. The sporty stand-up collar with embroidered BMW Motorsport inscription has a stud fastener, as does the waist adjustment. The sleeve slits are designed with gloves in mind: they include zips and also stud fasteners. The 40 cm connector zip offers a wealth of combination options, e.g. with the **FivePocket jeans**. The **RaceFlow** embodies straightforward motorcycling fun, and this is conveyed visually by its BMW Motorsport colours. The **RaceFlow** jacket is available in men's sizes S to 4XL.

5. Trousers.

ClimaProtect trousers

The new **ClimaProtect** trousers are entirely new to the programme and are supplied in unisex sizes. They are designed for riders who are not put off by rain and puddles when it comes to going to work on the motorcycle. The trousers are made of a triple-layer laminate. The abrasion-resistant upper material with stretch ensures agility while the **BMW Climate Membrane** keeps the wearer dry. This makes the trousers ideal for the transition period between the seasons.





Media information

Date 6 November 2018

Topic

page 13

Long side zips combined with an elasticated cord in the waist make it easy to slip the trousers on over regular clothes. These trousers make no compromises in terms of safety: NPL knee protectors are installed which are height-adjustable, while hip protectors can be retrofitted as required.

The **ClimaProtect** trousers are certified according to DIN EN 1621 and come in dark grey; with their slim styling they are discreet and easily combinable, available in sizes XS to 4XL.

Rider trousers



The **Rider** trousers are designed in outdoor style, a perfectly functional, relaxed garment with which to tackle the wind and weather – for both men and women. The abrasion-resistant textile combination of cotton and polyamide is windproof and waterproof due to the integration of the **BMW Climate Membrane**, a zip-on feature which can be added as needed. For maximum comfort away from the motorbike saddle, the removable knee protectors are height-adjustable. The hip protector can also be removed. The user-friendly ventilation zips at the front of the upper thighs provide genuine comfort. In order to be able to respond flexibly to different boots, zips on the leg seam enable the width to be adjusted accordingly.

The everyday practicality of the **Rider** trousers is reflected in its two seat pockets and two zip pockets, allowing keys and wallets to be kept securely in a familiar place. In the men's version, storage space is expanded with the addition of two side cargo pockets. The novel-style textile belt made of elasticated band bears the BMW branding on the extra-flat fastener system and is a contrasting colour. The **Rider** trousers come in black, available in men's sizes 46 to 60 and women's sizes 34 to 48.

Media information

Date 6 November 2018

Topic

page 14

6. Boots.

Flow boots.



The **Flow boots** are an extra-light short-shaft boot for warm regions and hot summer days. An especially striking feature of the **Flow boots** is the fact that they offer excellent ventilation due to their ingenious mixture of leather and textile. As a result, no waterproof membrane is required. In spite of the boot's light appearance, comfort and safety are by no means compromised.

The **Flow boots** are fitted with shin and ankle protection as well as heel and toe reinforcements, and they are certified according to DIN EN 13634:2017. A gear lever protector on the left boot provides protection from spot abrasion. The **Flow boots** are done up with a short zip combined with a generously-sized velcro surface.

The new look is created by a decorative matching print on the outside and inside along with silver reflective elements above the heels. A sturdy rubber sole ensures a secure footing. The **Flow boots** are fitted with a quick-dry, breathable functional lining edged with a soft shaft collar made of neoprene. The moisture-carrying inner sole is anatomically formed and can be removed. The **Flow boots** come in grey in the sizes 36 to 48.

ProRace boots.

The **ProRace** boots are new to the program in 2019. In their function as light, entry-level boots suitable for touring, they can be worn with jeans or touring trousers, and their discreet appearance allows them to be combined with a wide range of other items from the BMW Motorrad product program. Side and heel sliders underscore the boots' sporty look. The side sliders are plugged in and attached by means of a screw for easy changing. The boots also feature an anatomically shaped shin guard, inside toe reinforcements and a rugged shock absorber in the heel area. A gear lever protector made of soft PU on the left **ProRace** boot prevents spot abrasion and protects the side foot.





Media information

Date 6 November 2018

Topic

page 15

The **BMW Climate Membrane** is inserted to provide wind and waterproofing as well as providing the feet with maximum breathability. The quick-dry, breathable lining in the inner shoe is additionally ventilated at the upper end of the shaft. A zip with an elasticated band on the inside of the shaft allows simple slip-on and slip-off as well as individual adjustment, thereby resulting in outstanding wear comfort. In addition, a wide velcro area on the calf of the **ProRace** boot allows generous fit adjustment so as to prevent leg fatigue, especially on long rides. Meanwhile stretch zones in the side foot and heel area and a non-slip rubber sole enable secure, carefree mobility away from the motorbike saddle. For optimum care, the inner sole is removable and washable. The **ProRace** boots are of course CE-certified according to DIN EN 13634. They come in black and are available in sizes 39 to 48.

Dry sneakers.



The ankle-high **Dry sneakers** are now a casual companion on short trips through town in virtually all weathers. The outer material in roughened leather is partially waxed, combining the sporty flair of a basketball shoe with the functionality of a biker boot. A coloured functional lining made of 3D air spacer fabric ensures well-ventilated wear comfort. The functional BMW Climate Membrane makes the shoe windproof and waterproof while at the same time retaining maximum breathability.

Reinforcements in the heel area and toe cap ensure safety in the **Dry sneakers**, as does the ankle protector with inner gel pads. The heel is additionally protected by means of an outer plastic mould section with integrated reflection zones. Comfortable slip-on/slip-off due to zips on the inside of the shoe is a must. The leather lace cover with BMW logo secures the bows from getting caught. Meanwhile extensive branding on the eyelets, studs and inner sole give the **Dry sneakers** an authentic finish.

The **Dry sneakers** are available in easily combinable black in sizes 39 to 48.



Media information

Date 6 November 2018

Topic

page 16

7. Gloves.

ProRace gloves.

The **ProRace** gloves are a homage to motorcycle racing. They are ideal as summer gloves for sporty bikers who attach particular importance to maximum freedom of movement, safety and exceptional haptics. Partly protected by temper foam, the **ProRace** gloves have an extremely abrasion-resistant palm made of kangaroo leather and an enormously flexible back made of goatskin leather and stretch zones.



The knuckle shell is likewise underlaid with viscoelastic foam. The light kangaroo leather has the advantage that it does not leave any marks on the machine when on a sweat-inducing ride. The scaphoid bone has dual protection with keratan, thereby increasing abrasion resistance. The finger seams of the **ProRace** gloves are finished with a special lockstitch so as to prevent the formation of pressure points caused by internal seams. Conductive leather facilitates touchscreen operation. Meanwhile, pre-shaped fingers enable faster gear shifting.

In terms of colour, these gloves match the **ProRace** suit, the **ProRace** gloves and of course the BMW sports motorcycles. The glove are available in the colour scheme black, white and red and come in sizes 6-6½ to 12-12 ½.

Rockster gloves, special version.

The **Rockster** gloves are highly popular among riders with a preference for the heritage style. For this reason they will be available in a limited special version in classic retro beige this season. The back of the hand and palm are made of soft and very flexible goatskin leather, and there is doubled leather on the palm for increased abrasion protection. In order to retain optimum grip on the gas handle, the palm of the **Rockster** gloves is not underlaid. The back of the hand makes do with a light tricot lining.



Meanwhile, ventilation perforation between the fingers ensures outstanding wear comfort in warm weather. The thumb and index finger are optimised for effortless touchscreen operation, and three stud fastener positions are provided for size adjustment. The **Rockster** gloves are available in sizes 6-6 ½ to 12-12 ½.



Media information

Date 6 November 2018

Topic

page 17

8. Functional clothing.

HighViz vest.

The **HighViz** vest for safety-conscious motorcyclists has been substantially revised and functionally optimised. The glowing yellow colour and the use of reflective applications on the chest and back maximise wearer visibility.



The vest matches all BMW Motorrad jackets and is designed for a close fit so as to avoid any fluttering in the wind or at high speeds. The **HighViz** vest is made of polyester and goes out in unisex sizes from XS to 4XL.

Protector vest.



The trend towards wearable protectors allowing flexible use is ongoing, resulting in a fundamental redesign and further development of the **Protector vest**. As an alternative to the retrofit back protector, it provides optimum protection for the spine, kidney and chest by means of large-area coverage. With a weight reduction of at least 20 per cent, the **Protector vest** now enhances the product range with improved ergonomic shaping and flexibility in the chest protector. As a genuine all-rounder, the **Protector vest** offers not just a high level of comfort and safety on the motorcycle but also potential for use in connection with other sports and leisure activities – such as skiing and snowboarding. The protectors themselves are

made by the specialist manufacturer KOMPERDELL and have come out top on a number of comparative tests.

The back protector meets safety standard DIN EN 1621-2 and therefore Level 2, while the chest protector meets DIN EN 1621-3 and Level 1. In addition to excellent impact absorption values, wear comfort is of course a top priority in a vest. Thanks to the use of dual-density foams, the new **Protector vest** adapts perfectly to the spine based on body heat. Generous perforation at the back, sides and chest also make it extremely breathable. A laterally running front zip ensures the **Protector vest** is easy to slip on and off in all conditions. The upper material is a combination of flexible tricot fabric (spandex) and polyester. The neck and arm cut-outs are lined with two layers of fabric, making the borders particularly comfortable and elastic. The **Protector vest** is available in black and yellow and comes in sizes S to XL.



Media information

Date 6 November 2018

Topic

page 18

Strap-on Protector.



The redesigned **Strap-on Protector** is now safer, lighter and more comfortable. Designed to be worn under a jacket, it offers exceptional breathability and a perfectly tailored fit. The back protector covers a large area, providing effective protection for the spine, shoulder blades and kidney area. Stud fasteners can be used to add an optional chest protector. The innovative cross protector itself is supplied by specialist manufacturer KOMPERDELL and has come out top on a number of comparative tests. The back protector meets safety standard DIN EN 1621-2, i.e. Level 2. In addition to excellent impact absorption values, wear comfort is of course a top priority in a strap-on

back protector. Thanks to the use of dual-density foams, the back protector adapts perfectly to the spine based on body heat. The extensive perforation in the back segments makes for excellent air circulation. The **Strap-on Protector** is black on the outside and yellow on the inside and comes in sizes S to XL.

Basic kidney belt.

Designed especially to offer effective protection from cooling of the muscles in the lumbar spine region, the **Basic kidney belt** also provides an efficient support function.

Excellent wear comfort is ensured by ergonomic shaping as well as breathable neck and kidney sections. Meanwhile continuously variable size adjustment guarantees a perfect fit. Made of light functional materials, the **Basic kidney belt** is suitable for use in the summer. The **Basic kidney belt** is available in black with yellow inserts and a BMW Motorrad inscription; it comes in sizes S to XL.



Pro kidney belt.

The Pro kidney belt is included in the product range for riders who attach importance to using an especially effective kidney belt. It protects the muscles in the lumbar region while also featuring an integrated protector for the lower back area. This protector has been flexibilised by means of preset bending points and now provides an excellent fit with its improved ergonomic shaping. Certified as a Level 1 lumbar protector, it complies with DIN EN 1621-2.



The **Pro kidney belt** can of course be combined with all motorcycle clothing and is a faithful companion throughout all the seasons. Enhanced breathability as



Media information

Date 6 November 2018

Topic

page 19

compared to the predecessor model ensures comfortable aeration in the back area when riding in warm temperatures. Meanwhile continuously variable width adjustment guarantees a perfect fit. The **Pro kidney belt** is available in black in sizes S to XL.

9. BMW Motorrad Style Collection

BMW Motorrad Style Motorsport.

The new BMW Motorrad Motorsport Collection breathes the air of the race track and the pit lane, adding a touch of team spirit and coolness in the colours blue, white and red.

The current range includes T-shirts, polo shirts, a short-sleeved and a long-sleeved shirt, a hooded jacket and a between-seasons jacket. Headgear needs are met in the form of a cap and a woollen beanie. The range also includes a branded rucksack and a helmet bag. Rounding off the 2019 **BMW Motorrad Style Motorsport** collection as the smallest item in the programme is the lanyard.

All products bear the **BMW Motorrad Style Motorsport** branding. The clothing items also feature the BMW logo and the BMW M logo as well as the ADVANTEC and 3ASYRIDE inscriptions.

Motorsport T-shirt, men



The **Motorsport T-shirt** is standard equipment for all motor racing fans. The BMW M logo appears on the left breast, while the BMW Motorrad Motorsport and 3ASYRIDE print is centred on the back for instant recognition. Made of cotton in the BMW Motorsport colours, the T-shirt is available in sizes S to 3XL.

Motorsport polo shirt, men

The elegant polo shirt is particularly sporty in style. It is branded with all the insignia of the BMW Motorsport cosmos: the BMW logo on the left sleeve, the BMW M logo on the left breast and a BMW Motorrad Motorsport print on the back. The buttons on the short button strip bear the BMW Motorrad inscription. Made of cotton in the BMW Motorsport colours blue, white and red, it is available in sizes S to 3XL.





Media information

Date 6 November 2018

Topic

page 20

Motorsport short-sleeved shirt, men



The **Motorsport short-sleeved shirt** is the ultimate functional garment for racing fans. Classically styled, it has a breast pocket with separate pen slot. The buttons on the button strip are branded with the BMW Motorrad inscription, while the BMW Motorrad Motorsport insignia appear on the back and sleeves. It is made of an easy-care mixture of polyester and cotton and comes in the BMW Motorsport colours blue, white and red in sizes S to 3XL.

Motorsport long-sleeve shirt, men

The **Motorsport long-sleeved shirt** is the ultimate functional garment for racing fans. Classically styled, it has a breast pocket with separate pen slot. The buttons on the button strip are branded with the BMW Motorrad inscription, while the BMW Motorrad Motorsport insignia appear on the back and sleeves. Made of cotton in the BMW Motorsport colours blue, white and red, it is available in sizes S to 3XL.



Motorsport T-shirt, women



The **Motorsport T-shirt** is standard equipment for all ladies who are motor racing supporters. The BMW M logo appears on the left breast, while the left sleeve features the BMW logo. Other brandings with the BMW Motorrad Motorsport, ADVANTEC and 3ASYRIDE inscriptions are printed discreetly on the back and chest. Made of cotton and elastane in the BMW Motorsport colours, the T-shirt is available in sizes S to 3XL.

Motorsport polo shirt, women

The elegant polo shirt is particularly sporty in style. It is branded with all the insignia of the BMW Motorsport cosmos. The buttons on the short button strip bear the BMW Motorrad inscription, while the BMW logo appears on the left sleeve and the BMW M logo is to be seen on the left chest. Other brandings with the BMW Motorrad Motorsport, ADVANTEC and 3ASYRIDE inscriptions are printed discreetly on the back and chest. Made of cotton pique in the BMW Motorsport colours blue, white and red, it is available in sizes XS to 2XL.





Media information

Date 6 November 2018

Topic

page 21

Motorsport softshell jacket, unisex



The functional softshell jacket in the new Motorsport collection is a versatile companion, whether for travelling or at the race track. Made of breathable, triple-layer softshell material, it is both wind and water-repellent. The **Motorsport softshell jacket** keeps the wearer warm due to its fleeced inside surface. Fitted with a stand-up collar, it also features a removable hood with drawstring. Velcro flaps are provided at the wrists for adjustment purposes. The jacket is done up by means of continuous front zip, and there are also two zip-up side pockets.

It is branded with all the insignia of the BMW Motorsport cosmos: BMW logo, M logo, BMW Motorrad Motorsport, ADVANTEC and 3ASYRIDE. The softshell jacket is made of polyester and comes in the characteristic BMW Motorsport colours blue, white and red. As a unisex item it is available in sizes XS to 3XL, with sizes XS and S slightly tapered at the waist for women.

Motorsport hooded jacket, unisex

This laid-back hooded jacket is a sporty, all-round companion. The fleecing on the inside ensures a snug wear feel. The continuous front zip bears a BMW Motorrad inscription and is flanked by two kangaroo pockets. The hooded jacket is branded with all the insignia of the BMW Motorsport cosmos: BMW logo, M logo, BMW Motorrad Motorsport, ADVANTEC and 3ASYRIDE. It is made of cotton and polyester and is available in the BMW Motorsport colours blue, white and red. The **Motorsport hooded jacket** comes in the unisex sizes XS to 3XL.



Motorsport jacket, unisex



The **Motorsport jacket** is a wind and water-repellent 2-in-1 between-seasons jacket. The removable inner jacket can of course be worn separately. The sporty stand-up collar contains a hood, and there are two stud fasteners on the collar to keep it closed for wrapping up warm, also preventing the zip from flapping in the wind.



Media information

Date 6 November 2018

Topic

page 22

On the sides there are two zip pockets, supplemented by an additional pocket on the inside of the jacket. For adjustment purposes, velcro flaps are provided at the wrists and there is a drawstring around the bottom seam of the jacket. The jacket is branded with all the insignia of the BMW Motorsport cosmos: BMW logo, M logo, BMW Motorrad Motorsport, ADVANTEC and 3ASYRIDE. The jacket and inner jacket are made of cotton and polyester and come in the BMW Motorsport colours blue, white and red. The **Motorsport jacket** is available in the unisex sizes XS to 3XL, with sizes XS and S slightly tapered at the waist for women.

Motorsport cap

Extra sporty cap with BMW logo and BMW Motorrad Motorsport inscription. There is a velcro fastener for adjustment purposes. The **Motorsport cap** is made of cotton and comes in one size in the BMW Motorsport colours blue, white and red.



Motorsport woollen beanie



The new woollen beanie from the BMW Motorsport collection is warm and light. It has a double-layer cotton design and is branded with the BMW logo and BMW Motorrad Motorsport inscription. The woollen beanie comes in a single size in the BMW Motorsport colours, blue, white and red.

Motorsport lanyard

The high-quality lanyard has a plug cap and a rotating metal snap hook. It is made of polyester and comes in the BMW Motorsport colours blue, white and red.



Motorsport rucksack



The sporty leisure rucksack offers a wide range of storage options. The two separated main compartments can be accessed by means of a zip, while the main rear compartment is large enough to hold a 17" laptop. The front compartment has a zip fastener and contains various slot pockets. There are two mesh pouches at the side in which drink bottles can be transported for easy access, for example. A small zip pocket in the upper back area is designed for keys and wallet. The back is comfortably padded, as are the shoulder straps. There is also a hip belt in order to maintain a comfortable



Media information

Date 6 November 2018

Topic

page 23

position at all times over longer distances. The **Motorsport rucksack** has a volume of approx. 20 litres; it is made of polyester and measures 32 x 48 x 18 cm. It is available in the BMW Motorsport colours blue, white and red.

Motorsport helmet bag

The helmet bag is a classic item of the Motorsport collection. With a base stabilised by means of a plastic insert, the bag is ideal for transporting and storing a helmet. The soft inner fleece lining protects the helmet from scratches and comes with three additional pockets for spare visors. With two handles on the outside and a removable shoulder strap, the bag is convenient to carry. The outer material is polyester and the bag has a volume of approx. 23 litres. The bag comes in the BMW Motorsport colours blue, white and red and measures 38 x 27 x 26 cm.



BMW Motorrad Style Kit.

The **Style Kit** is the contemporary but practical collection for all-year-round use. The unique lifestyle concept of “Make Life a Ride” is conveyed by means of cool, vintage-inspired looks that are perfect for all areas of life – whether on the road, at the festival grounds or in the living room at home. The **Style Kit** collection comprises a range of straightforward favourites with authentic prints for him and her. Made of high-quality materials, the **Style Kit** includes a range of outer garments that embody country-road adventure in a discreet yet stylish manner. And since a mobile lifestyle is about more than just being well dressed, the **Leather** collection supplements the range with practical accessories such as bags, belts, wallets and a high-quality penknife.

BMW Motorrad Style Kit 1.

Round T-shirt, men



The classic T-shirt with large “RIDE FAST” motif print leaves no doubt as to what is being expressed in visual terms: a genuine love of motorcycles. The collection label at the edge of the hem is a small but attractive detail. For authentication purposes it bears the inscription “Make Life a Ride” and the BMW logo. Made of cotton, the T-shirt comes in smart light grey and is available in sizes S to 2XL.



Media information

Date 6 November 2018

Topic

page 24

Unique T-shirt, men

Classically styled T-shirt in used look with a clear message across the chest: "UNIQUE BAVARIAN ENGINEERING". There is also a discreet BMW Motorrad inscription underneath complete with BMW logo. The Unique is made of cotton, comes in dark red and is available in sizes S to 2XL.



Check shirt, men



The check shirt with button-down breast pocket has long come to symbolise an unconventional, hands-on lifestyle. A discreet badge with BMW logo appears on the left sleeve. Made of cotton, the shirt is available in orange-dark blue. Sizes range from S to 2XL.

Marl hoodie, men

Basics are characterised by the fact that they can be used in all situations – and the **Marl hoodie** is designed to be just such an all-round companion. Its high-neck cut-out keeps the wearer nice and warm, while the shoulder yokes are robust and prevent rucksack straps from wearing through. A discreet badge with BMW logo on the left sleeve and a small "Make Life a Ride" collection label on the edge of the hem provide a reference to the **Marl hoodie's** origins. Made of a combination of cotton and polyester, it is available in sizes S to 2XL.



Badge T-shirt, women



Cool lady's T-shirt on which the turned-up sleeves can be attached with a strap and button. Three decorative badges adorn the left breast, giving the shirt its name. Light wear comfort is ensured by a fabric mixture consisting of viscose, polyester and cotton. The T-shirt comes in red and is available in sizes XS to XL.



Media information

Date 6 November 2018

Topic

page 25

Unique sweatshirt, women

A gorgeous feel-good sweatshirt with a slightly used look. The large “UNIQUE BAVARIAN ENGINEERING” print with BMW logo and BMW Motorrad inscription on the front is a call to motorcycling fun and adventure. Made of cotton, the Unique comes in dark green and sizes XS to XL.



Check blouse, women



The check blouse with button-down breast pocket has long come to symbolise an unconventional, hands-on lifestyle. A large “UNIQUE BAVARIAN ENGINEERING” print adorns the back and there is a discreet badge with BMW logo on the left sleeve. It is made of cotton and comes in grey-blue. Sizes range from XS to XL.

College cardigan, women

Super snug **College cardigan** complete with hood and everything it takes to become a personal favourite. The elbows are reinforced with patches and there are two kangaroo pockets at the front. The BMW logo badge on the left sleeve is a sign of genuine motorcycling tradition.

The **College cardigan** with contrasting hood lining is made of a combination of cotton and polyester. It is available in sizes ranging from XS to XL.



Waxed cap



Laid-back cap with curved peak in vintage-inspired look. Elaborately embroidered with white “UNIQUE BAVARIAN ENGINEERING” inscription. The cap is made of cotton and comes in one size.



Media information

Date 6 November 2018

Topic

page 26

Unique neck scarf

Cool item for tradition-conscious riders – both male and female. White “UNIQUE BAVARIAN ENGINEERING” inscription against a dark red background, 100 per cent cotton. Square shape, 53 x 53 cm.



Easy Tube Stripe



The versatility of this functional buff makes it a popular item. Whether scarf, face protector, cap, pirate headwrap, headband or collar – there are no limits to how it can be used. Striped in dark red and grey, the **Easy Tube Stripe** is made of easy-care polyester and bears a discreet BMW Motorrad inscription on the hem.

BMW Motorrad Style Kit 2.

Unique T-shirt Green, men

Classically styled T-shirt in laid-back vintage look with a clear message across the chest: “UNIQUE BAVARIAN ENGINEERING”. There is also a discreet BMW Motorrad inscription underneath complete with BMW logo. The **Unique** is made of cotton and comes in dark green in sizes S to 2XL.



Stripe T-shirt, men



The **Stripe T-shirt** is an easily combinable T-shirt with a striped pattern. The “Make Life a Ride” collection label with BMW Motorrad inscription and BMW logo is discreetly sewn into the hem edge. The **Stripe T-shirt** is made of cotton and comes in dark blue and grey in sizes S to 2XL.



Media information

Date 6 November 2018

Topic

page 27

Crew sweatshirt, men

Wonderful feel-good sweatshirt with flat seams in the chest and shoulder area. The large “UNIQUE BAVARIAN ENGINEERING” print with BMW logo and BMW Motorrad inscription on the front is a call to motorcycling fun and adventure. The BMW Motorrad logo appears on the left sleeve and a small “Make Life a Ride” collection label with BMW Motorrad inscription and BMW logo is placed on the edge of the hem. The **Crew sweatshirt** comes in grey in sizes S to 2XL.



Cord shirt, men



A pleasant companion made of soft cord with two breast pockets. The **Cord shirt** is made of cotton. It is olive-coloured with contrasting blue on the inside. The discreet badge with BMW logo is a sign of the very finest motorcycling tradition. Available in sizes S to 2XL.

Coast pullover, men

Comfortable pullover made of cotton in leisurely seaman style. The collar has a short button strip and there are reinforcements at the shoulders and elbows. The badge on the left sleeve bears the inscription “UNIQUE BAVARIAN ENGINEERING”. Available in sizes S to 2XL.



Turf jacket, men



The **Turf jacket** is a warm parka for cool days. It has two side pockets and two chest pockets. The jacket is olive-coloured on the outside, while the inner lining features a contrasting contemporary check design. It is made of an easy-care weave blend of cotton and polyamide and comes in sizes S to 2XL.



Media information

Date 6 November 2018

Topic

page 28

Unique T-shirt, women

Shirt with a slightly tapered waist and round neckline bearing a clear message on the chest: "UNIQUE BAVARIAN ENGINEERING". There is also a discreet BMW Motorrad inscription underneath complete with BMW logo. The Unique is made of cotton, comes in off-white and is available in sizes XS to XL.



Turf jacket, women



Like the men's version, the **Turf jacket** for women is a warm parka for cool days with two side pockets and two chest pockets. The jacket is olive-coloured on the outside, while the inner lining features a contrasting contemporary check design. A small "Make Life a Ride" collection label is sewn into the hem edge. The jacket is made of an easy-care weave blend of cotton and polyamide and comes in sizes XS to XL.

Stripe socks, men

Warm socks with a fresh stripe pattern in the calf area for day-to-day use. The BMW metal emblem at the cuff is a refined detail. The socks are made of a combination of cotton, polyamide and elastane. The stripe colours are dark blue, brown, grey and orange. The socks come in sizes 39 to 48.



Neps cap



A cap for really cold days with a highly versatile look. The small BMW metal emblem on the turn-up reveals the wearer's motorcycle affinity – even if the bike itself is in hibernation, waiting for the start of the season. The cap is made of polyacrylic and comes in one size in the colour combination dark blue, dark red and grey.

Neps scarf, men

Attractive scarf in a fresh autumnal colour combination. Long, warm and ideal for cold days. Colour mixture of dark blue, dark red, grey and orange, size 40 x 180 cm.





Media information

Date 6 November 2018

Topic

page 29

BMW Motorrad Style Kit Leather.

BMW Leather notebook



Notebook in high-end finish with rounded corners and lockstitch seams in contrast colouring. A rubber strap is provided to keep the notebook securely closed. The **BMW Leather notebook** also features a bookmark for easy orientation. The BMW logo is discreetly embossed on the outside. Comes in dark brown leather.

BMW Motorrad mobile phone case

Beautifully finished genuine leather pouch with lockstitch seams in contrast colouring. On the inside there is a smartphone compartment, a large pocket and three small card slots. The BMW logo is discreetly embossed on the outside. The **mobile phone case** in dark brown is available in the size 15.5 x 9.5 cm.



Leather key holder



Practical **key holder** made of genuine leather. Dark brown, with stud fastener and embossed BMW Motorrad inscription.

BMW Motorrad key case

The elegant key case with six small snap hooks on the inside and lockstitch seams in contrasting colour on the outside. The interior lining is enhanced with a finely applied BMW Motorrad inscription. The **BMW Motorrad key case** is of course made of genuine leather and comes in dark brown with embossed BMW logo.



BMW Motorrad bag



This elegant weekender is the perfect companion on short journeys and weekend trips. It features a high-quality finish in a combination of canvas and leather, with a long zip for easy access. A reference to authentic BMW Motorrad tradition is provided by a leather badge with BMW logo and BMW Motorrad inscription on the front. Available in the colour combination beige and dark brown.



Media information

Date 6 November 2018

Topic

page 30

BMW Motorrad sponge bag

The high-end **BMW Motorrad sponge bag** matches the elegant travel bag. It is made of canvas, has a fine leather handle and features an embossed BMW Motorrad inscription.



BMW Motorrad penknife



The practical **penknife** has a locking blade made of stainless steel; its slightly curved olive wood handle offers a pleasant, secure grip. The penknife comes with a leather pouch in high-quality finish which can be closed with a stud fastener. A belt loop is integrated on the back. When closed, the knife is 13.5 cm long; it opens to a length of 19.3 cm. The blade is 8 cm long and 2 mm thick; in total the knife weighs 140 g.

BMW Motorrad wristband

The wide **wristband** made of genuine leather is a premium accessory to round off the contemporary vintage look. It has a high-quality metal clasp for width adjustment and features the BMW Motorrad inscription embossed in the leather.



BMW Motorrad textile belt



The new **textile belt** is made of a vintage-inspired combination of leather and textile. The robust design and high-quality appearance makes it a perfect match for jeans and casual upper garments. The extra flat metal clasp has a lasered BMW logo and BMW Motorrad inscription. The textile belt comes in beige with dark brown leather and is available in lengths from 80 cm to 120 cm.

BMW Motorrad leather belt

The leather belt is a timeless accessory which goes perfectly with jeans. It is made of attractive leather and features a simple but elegant metal clasp. This day-to-day companion is enhanced with a centrally embossed BMW Motorrad inscription and a BMW logo at the end. The **leather belt** is dark brown and is available in lengths from 80 cm to 120 cm.





Media information

Date 6 November 2018

Topic

page 31

BMW Motorrad pins



The pins in the new collection are supplied in sets of three. They are produced in classic style, made of metal with blackened recesses. In addition to performing a decorative function, enabling the wearer to express their enthusiasm for the brand by attachment to any garment, the pins are also coveted collector's items.

You will find press material on BMW motorcycles and BMW Motorrad rider equipment in the BMW Group PressClub at www.press.bmwgroup.com.

In case of queries please contact:

Dominik Schaidnager
Communication BMW Motorrad
Telephone: +49 89 382 50181
E-mail: Dominik.Schaidnager@bmw.de

Tim Diehl-Thiele
Head of Communication BMW Motorrad
Telephone: +49 89 382-57505
E-mail: Tim.Diehl-Thiele@bmw.de

Internet www.press.bmw.de
E-mail: presse@bmw.de

The BMW Group

With its four brands BMW, MINI, Rolls-Royce and BMW Motorrad, the BMW Group is the world's leading premium manufacturer of automobiles and motorcycles and also provides premium financial and mobility services. As a global company, the BMW Group operates 30 production and assembly facilities in 14 countries and has a global sales network in more than 140 countries.

In 2017, the BMW Group sold over 2,463,500 passenger vehicles and more than 164,000 motorcycles worldwide. The profit before tax in the financial year 2016 was € 10,655 billion on revenues amounting to € 98,678 billion. As of 31 December 2017, the BMW Group had a workforce of 129,932 employees.

The success of the BMW Group has always been based on long-term thinking and responsible action. The company has therefore established ecological and social sustainability throughout the value chain, comprehensive product responsibility and a clear commitment to conserving resources as an integral part of its strategy.

www.bmwgroup.com

Facebook:

<http://www.facebook.com/BMWGroup>

Twitter:

<http://twitter.com/BMWGroup>

BMW

Corporate Communications



Media information

Date 6 November 2018

Topic

page 32

YouTube:

<http://www.youtube.com/BMWGroupview>

Google+:

<http://googleplus.bmwgroup.com>