



BMW Motorrad

[bmw-motorrad.com/
ride](http://bmw-motorrad.com/ride)



The Ultimate
Riding Machine

UNSTOPPABLE

BMW MOTORRAD RIDE 2013.

PERFORMANCE IN EVERY FIBRE.



UNSTOPPABLE

- 12 Spot on – the red dot design award
- 14 HELMETS AND COMMUNICATION
- 28 The crazy life of Lucy Glöckner

- 30 SUITS
- 32 TEXTILE SUITS
- 44 LEATHER SUITS
- 50 BMW Motorrad textile expertise
- 52 JACKETS AND TROUSERS
- 58 Your safety guarantee – CE certification

- 60 BOOTS
- 66 Certified C.A.R.E and attention
- 68 GLOVES
- 72 FUNCTIONAL CLOTHING
- 84 The power of protectors

- 86 PROTECTIVE EQUIPMENT
- 92 ACCESSORIES AND BAGS
- 96 C.A.R.E.
Concept of Advanced Rider Equipment
- 98 THE A-Z OF RIDER EQUIPMENT
- 100 SIZE CHARTS



POWER YOU CAN FEEL. SPORTS CLOTHING FOR HIGH-PERFORMANCE RIDING.

Every time you take to your bike, you go one-on-one with the tarmac. You live for every corner and constantly seek the best line, whether on the racetrack or the road. Your equipment must deliver the ultimate in professional performance – just as the Sport helmet

and DoubleR leather suit and boots do. With Rider Equipment sport products from BMW Motorrad, every journey you make is a genuine racing experience.



**RIDING ENJOYMENT WITHOUT LIMITS.
ENDURO EQUIPMENT FOR ADVENTURERS.**

Roads aren't the only place to ride. The real fun begins where the road ends. Whatever the surface, BMW Motorrad Rider Equipment is always up to the job. Light and flexible, it is fitted with everything an

intrepid adventurer could ever need. So get out of the garage and into the great beyond, where there is absolutely nothing at all to hold you back.



**WEAR YOUR FREEDOM WITH PRIDE.
ROADSTER CLOTHING FROM BMW MOTORRAD.**

Motorcycling is so much more than a means of transportation. You relish every journey you make, whether zipping along country lanes or popping into town for a coffee. With BMW Motorrad Rider

Equipment, you're perfectly kitted out for everyday life – both on and off your bike. So take to your machine, open the throttle, and live life the way you want it.



**YOUR GLOBAL COMPANION.
TOURING EQUIPMENT FROM BMW MOTORRAD.**

The world is your oyster. Every inch and every corner of every road offer nothing but enjoyment. The longer the journey, the better. Which is why your BMW Motorrad touring equipment is designed to cope with any weather

conditions and any climate you care to throw at it. So no matter where you are in the world, you're always right at home in the saddle.

FIRST AND FOREMOST, A MOTORCYCLE HELMET MUST PROVIDE PROTECTION. BUT THAT'S NOT TO SAY THAT MAXIMIZING SAFETY MEANS SACRIFICING GOOD DESIGN. 2012 SAW THE AirFlow 2 HELMET FROM BMW MOTORRAD CLAIM ONE OF THE WORLD'S MOST SOUGHT-AFTER HONOURS – THE RED DOT DESIGN AWARD, WITH A “BEST OF THE BEST” COMMENDATION.

When we discover something new, we use all of our senses to take it in. We feel, we smell, we hear. Firstly though, we use our eyes. In just a few seconds, we instinctively decide whether we like what we see. Design is a key facet in every area of our day-to-day lives. What shape sofa should we buy? What material do we want for our new shirt? What colour MP3 player are we looking for?

The panel of judges for the red dot design award looks at these factors and many other aspects of product design. The Design Zentrum Nordrhein-Westfalen has presented the prize since 1955, and it is considered one of the greatest honours in the industry. Competition is fierce – in 2012, 1,800 businesses and designers submitted entries from 58 countries, in 19 categories, ranging from automotive, to architecture and medicine. In total, 4,515 entries were received, making the prize even more sought-after.

THE RED DOT

THE JUDGES' DECISION.

The 30-member panel of judges is made up of a range of international design experts and they certainly have their work cut out. They assess the submissions according to criteria such as originality, functionality and environmental sustainability. The BMW Motorrad AirFlow 2 helmet proved particularly popular with the panel. Along with the Husqvarna Nuda 900 R, it received the red dot design award with the highest possible commendation: “best of the best”.

The judges provided the following explanation: “The BMW AirFlow 2 has been designed with incredible precision and accuracy. It also offers a maximum of comfort and safety to wearers, including the female target group. The jet helmet is light in weight, and embodies a lighthearted approach to life.”

AWARD-WINNING DESIGN.

Harry Schmidt, who was heavily involved in designing the AirFlow 2, was delighted with the result – not least because the judges' notes touched on each of his key priorities when designing the helmet. “We really focused on bringing out the openness, light weight, and dynamism of the jet helmet structure,” comments Schmidt. “In addition, elegantly integrating functional elements, high-quality details, and impeccable finishing were of great importance.”



SETTING TRENDS, WITHOUT POLARIZING OPINION.

Design is a key priority when developing BMW Motorrad helmets. The designers of the AirFlow 2 were tasked with incorporating cutting-edge trends, without polarizing opinion. Of course, the principal role of a helmet is functional – to protect the rider in the event of an accident. In addition, cooling, aerodynamics, fit and vision are particularly important. The challenge is to develop a helmet within a strict technical framework that also embodies the spirit of the times. Harry Schmidt's team of developers and designers tackled this challenge head on, resulting in a perfect synthesis of safety and style.



red dot design award



PROTECTION IS EVERYTHING.

The ten commandments of good helmet design.

SAFETY

BMW Motorrad helmets meet, and in many respects exceed the ECE 22-05 standard. All helmets have expanded polystyrene inner shells of varying thicknesses, providing maximum protection of each zone (chin, forehead, back and crown of the head, and cheeks)

FIT

Our helmets are available in sizes from 48/49 to 64/65, and can be individually adjusted for the perfect fit using cheek and neck pads, which are also available in various sizes. This guarantees a flawless fit.

VENTILATION

All BMW Motorrad helmets have a highly effective low-pressure ventilation mechanism. The AirFlow helmet was the first in the world to use the AirFlow principle, allowing the air to pass through special ventilation zones, creating a pleasant cooling effect.

VERSATILITY

The BMW Motorrad range includes the right helmet for just about every use. For example, the System 6 EVO flip-up helmet, with its built-in sun visor, four-hinge mechanism and preparation for the retrofittable Bluetooth® communication system, is ideal for bikers who place a premium on comfort.

FASTENERS

All BMW Motorrad helmets have either a simple-to-operate snap lock or double-D ring chin strap fastener depending on the type of helmet, and they all have additional neck straps to help keep them in place in the event of a crash.

COMFORT

Virtually all BMW Motorrad helmets have a removable, washable, breathable and antibacterial lining.

WEIGHT

Every gram of weight saved makes riding that much more enjoyable. Despite its sophisticated chin section, glass fibre reinforced shell, sun visor and double-glazed design, the size 58/59 System 6 EVO helmet weighs in at around 1,595 grams. Furthermore, the Race helmet weighs just 1,350 grams.

AERODYNAMICS AEROACOUSTICS

BMW Motorrad has its own wind tunnel, a luxury other manufacturers can only dream about. This allows us to test every helmet design under real, replicable riding conditions, and then optimize its aerodynamics and aeroacoustics. So as well as their active safety benefits, the helmets are among the quietest in their class.

DESIGN

They're not just safe, they look great too. Each of our helmets is designed to be trendsetting, dynamic and eye-catching.

VISORS

All BMW Motorrad visors feature a high-performance anti-fog and anti-scratch coating, while the System 6, Sport and DoubleR helmets offer a double-glazed visor as standard. As such, they provide a level of fogging prevention that is currently unrivalled.

SYSTEM 6 EVO HELMET

BMWhelmets



Colour: Brilliant White

Weighing just 1,595 grams, the new System 6 EVO helmet provides the ultimate combination of comfort and performance. The four-hinge mechanism keeps the helmet extremely compact, even with the chin guard raised, while the double visor (fitted as standard) provides excellent vision in all weather conditions, incorporating an anti-fog inner visor and an outer visor with anti-scratch coating on both sides. The steplessly adjustable sun visor is also scratch-proof, and can be easily adjusted to changing light conditions. In addition to this, the aerodynamic and aeroacoustic performance is among the best on the market, resulting in a first-rate all-round package.

System 6 EVO helmet accessories

- BMW Motorrad communication system
- Liner, cheek pads and neck pads in various sizes
- Tinted visor
- Helmet cleaner
- Wipe cloth for visor
- Protector for visor

SYSTEM 6 EVO HELMET

- Glass fibre outer shell
- Flip-up chin section with four-hinge mechanism
- Inner shell in two sizes made from multi-segment expanded polystyrene
- Integrated, retractable sun visor with slider control for easy operation
- Central release button to open the chin guard
- Double-glazed visor as standard, anti-scratch coating on outer face
- Very wide field of vision
- Excellent head and visor ventilation
- Outstanding aerodynamics and aeroacoustics
- Chin strap with ratchet lock and integrated neck strap for optimum fit
- Removable, washable lining (made from DuPont Coolmax)
- Complies with ECE 22-05
- Compatible with BMW Motorrad communication system
- Alternative neck and cheek pads available to ensure a perfect fit
- Adjustable chin spoiler
- Sizes (unisex): 48/49–64/65



chin section flipped up

sun visor



Slide control on spoiler



Chin ventilation



Exclusive 2 helmet bag

- Waterproof, robust nylon material
- Impact-absorbing lining
- Padded all round
- Extra-long zip fastener
- Two strong carrying handles
- Colour: Anthracite

- Central release button to open the chin guard
- Simple slider provides effective ventilation around the forehead

ENDURO HELMET

BMWhelmets



Colour scheme: Volt



Colour: Dark Grey Matt



Colour: Magnesium Matt



Colour scheme: Wave



Colour scheme: Bullit



Exclusive 2 helmet bag

- Waterproof, robust nylon material
- Impact-absorbing lining
- Padded all round
- Extra-long zip fastener
- Two strong carrying handles
- Colour: Anthracite



Colour scheme: Bullit Blue

This helmet meets all the requirements made of a modern enduro sport helmet. It offers an excellent fit, peerless aerodynamics, and a high level of safety.



Enduro helmet accessories

- Liner and cheek pads in various sizes
- Tinted visor
- Wipe cloth for visor
- Protector for visor
- Helmet cleaner

- Outer shell made from glass fibre, with carbon and Kevlar reinforcements
- Five-part expanded polystyrol inner shell for optimum shock absorption
- Range of three different helmet shell sizes
- Liner made of DuPont Coolmax and Alcantara
- Removable, washable head and cheek pads
- Detachable chin spoiler for improved ventilation
- Injection-moulded, three-dimensionally curved visor with anti-scratch and anti-fog coating
- Complies with ECE 22-05
- Chin strap with double-D fastener
- Additional neck straps for secure hold
- Weight with visor approx. 1,380 grams, without visor approx. 1,270 grams
- Rider has the choice of riding with peak and visor, peak only, visor only
- Can be adjusted in a matter of seconds
- Sizes (unisex): 53/54–63/64



Colour scheme: Crow Edge

CARBON ENDURO HELMET



- Not available in the UK
- Carbon and Kevlar laminate outer shell
- Range of three different helmet shell sizes
- Five-part expanded polystyrol inner shell for optimum shock absorption
- Liner made of DuPont Coolmax and Alcantara
- Removable, washable head and cheek pads
- Detachable chin spoiler for improved ventilation
- Chin strap with double-D ring
- Neck straps for secure hold
- Injection-moulded, three-dimensional visor with anti-fogging/anti-scratch coating
- Very low weight: 1,110 grams including sun shield and visor (sizes 53/54 and 55/56), 1,210 grams (sizes 57/58 and 59/60), 1,300 grams (sizes 61/62 and 63/64)
- Complies with ECE 22-05
- Sizes (unisex): 53/54–63/64

* Tinted visors are not available in the UK.

SPORT HELMET

BMWhelmets



The Sport integral helmet combines safety, comfort, and precision, and its impact absorption performance is second to none. A neck band is built into the chin strap, ensuring the helmet stays in position in the event of an accident, so that it continues to protect the rider. A sophisticated ventilation system keeps the whole head cool at all times, while first-rate aeroacoustics make it one of the quietest integral helmets on the market. A double visor is also fitted as standard, keeping distracting reflections to an absolute minimum and preventing the build-up of fog.

Colour scheme:
Speed

SPORT HELMET



- Outer shell made of glass fibre, two sizes available
- Weighs approx. 1,380 grams
- EPS inner shell made up of several sections
- Double visor; outer visor has anti-scratch coating on both sides
- Visor is easily replaced
- Head ventilation adjustable by slide control
- Visor ventilation by means of centrally situated rocker
- Lining made of moisture-wicking Hydroplus, removable and washable
- Chin strap with snap lock
- Compatible with BMW Motorrad communication system
- Neck straps for secure hold
- Complies with ECE 22-05
- Sizes (unisex): 52/53–62/63

Sport helmet accessories

- BMW Motorrad communication system (Bluetooth®, complies with ECE 22-05)
- Tinted, anti-scratch visor with anti-fog coating
- Wipe cloth for visor
- Protector for visor
- Helmet cleaner
- Alternative neck and cheek pads available to ensure a perfect fit



Colour: White Metallic



Colour: Granite Grey Matt



Colour scheme: Magma



Colour scheme: Sparc



Colour: Night Black

RACE HELMET
BMWhelmets



For helmets to deliver maximum safety, they must combine a number of different functions. As would be expected, the integral Race helmet is exceptional when it comes to impact absorption. In addition though, it enables riders to concentrate fully on the road ahead, and to react at lightning speed. The extra-large visor with anti-fog inner visor provides unrestricted sightlines, even in a lying position, while the generously sized spoiler remains stable and secure at speeds of over 300 km/h. As suited to the racetrack as it is high-speed tours, this helmet represents the benchmark that other models aspire to.

New

RACE HELMET

- Suitable for track use
- Glass fibre/carbon fibre outer shell in two sizes
- EPS inner shell made up of several sections
- Effective visor and head ventilation
- Anti-fog inner visor (up to seal)
- Four visor tear-offs included
- Neck straps maintain stability
- Lining removable and washable
- Visor with wide field of vision, two-dimensionally curved, with anti-scratch coating on both sides
- Visor lock button at the side
- Large spoiler for maximum stability even at top speeds
- Enlarged neck section for lying position
- Double-D fastener
- Complies with ECE 22-05
- Weighs just 1,350 grams (small outer shell)
- Sizes (unisex): 52/53–62/63



Race helmet accessories

- Cheek and neck pads in various sizes
- Chin spoiler
- Replacement tear-offs
- Tinted visor with visor lock button
- Wipe cloth for visor
- Protector for visor
- Helmet cleaner

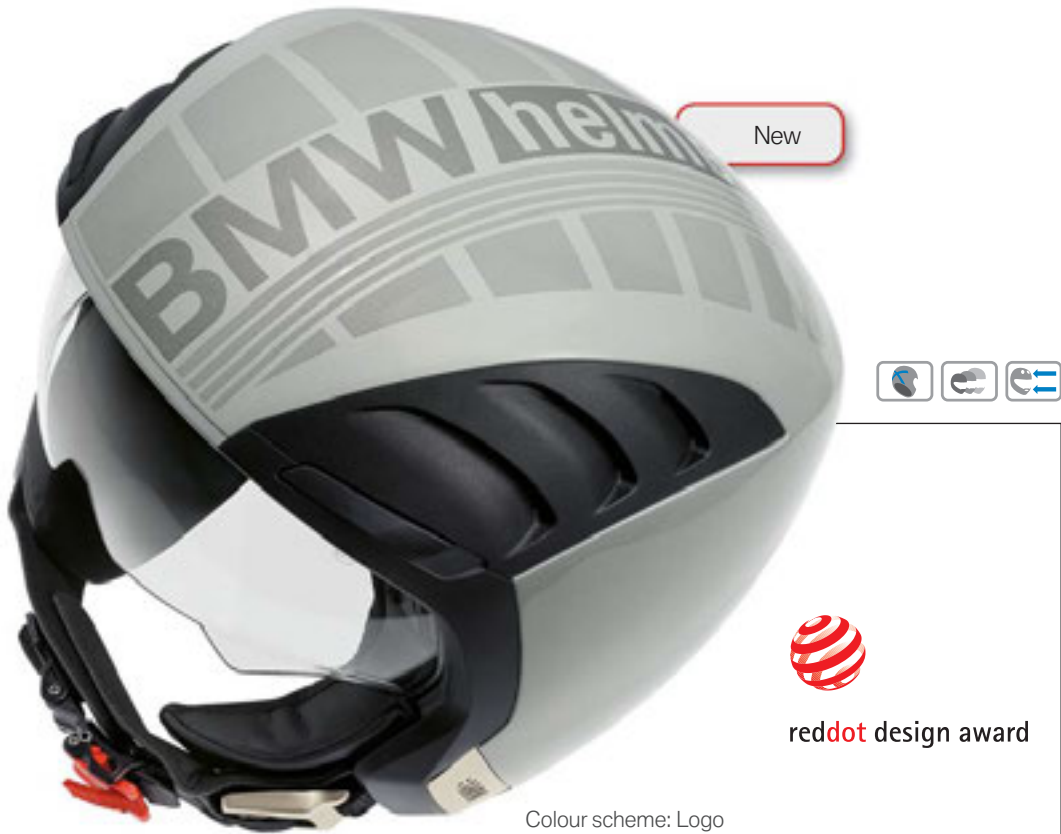


Exclusive 2 helmet bag

- Waterproof, robust nylon material
- Impact-absorbing lining
- Padded all round
- Extra-long zip fastener
- Two strong carrying handles
- Colour: Anthracite



AirFlow 2 HELMET
BMWhelmets



AirFlow 2 HELMET

- Premium jet helmet with excellent ventilation
- Two large ventilation zones can be closed via slide control to keep out rain
- High-quality aluminium elements with BMW branding on the side
- Chin strap with snap lock and variable insertion depths
- Integrated neck straps
- Weighs approx. 1,170 grams (small outer shell)
- Outstanding aerodynamics and aeroacoustics
- Outer shell made of glass fibre
- Impact-absorbing expanded polystyrol inner shell
- Washable liner
- Inner three-dimensionally curved visor, with anti-scratch coating on both sides
- Complies with ECE 22-05
- Compatible with BMW Motorrad communication system
- Colours: Night Black, Light White, Titanium Silver Metallic, Magnesium Matt Metallic, Cosmic Blue Matt Metallic, Neon Yellow Matt, Logo colour scheme, Light Grey Metallic
- Sizes (unisex): 52/53–62/63

AirFlow 2 helmet accessories:

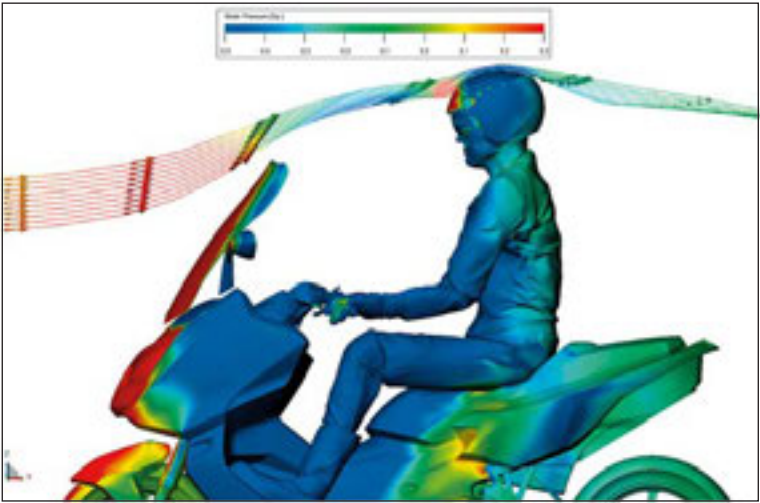
- BMW Motorrad communication system
- Tinted visor
- Head and neck pads in various sizes
- Helmet cleaner
- Wipe cloth for visor



Exclusive 2 helmet bag

- Waterproof, robust nylon material
- Impact-absorbing lining
- Padded all round
- Extra-long zip fastener
- Two strong carrying handles
- Colour: Anthracite

With the AirFlow 2 helmet, you'll always keep a cool head, both when cruising around the streets and racing along at high speeds. The helmet has been tested at different speeds in the wind tunnel, with the results showing that it offers the ultimate in aerodynamics. This is largely due to the way the windshield forms a single unit with the helmet, and diverts pressure according to the requirements of the ventilation system. A notable lip at the top of the rear section prevents turbulence, and ensures the helmet does not rattle or pull, while keeping noise to an absolute minimum. In addition, the two large ventilation zones can be closed via a slide control, ensuring that the AirFlow 2 helmet offers the ultimate in aeroacoustics and comfort.



Colour: Titanium Silver Metallic



Colour: Light Grey Metallic



Colour: Cosmic Blue Matt Metallic



Colour: Neon Yellow Matt



Colour: Night Black



Colour: Magnesium Matt Metallic



Colour: Light White

BMW MOTORRAD COMMUNICATION SYSTEM.

GET MORE OUT OF MOTORCYCLING.

Motorcycling is all about enjoying the moment – and sharing it. Especially with your riding companion. You also want to be able to listen to your favourite music, take phone calls and get instructions from your navigation system. And with the BMW Motorrad communication system, you can do all that, undisturbed by wind and engine noise, and without ever taking your eyes off the road.



SAFE, PRACTICAL AND HIGHLY USER-FRIENDLY.

The BMW Motorrad communication system features just three buttons – On/Off, Plus and Minus – and these allow users to operate all its functions. This makes it incredibly easy – and therefore safer – to use. The System 5, System 6, System 6 EVO, Sport, DoubleR and AirFlow 2 helmets are all designed to accommodate the BMW Motorrad communication system, so it can be fitted without affecting their ECE 22-05 certification. Your BMW Motorrad dealer will install the system in your helmet when you buy it, and you can then pair it with your own devices in seconds, whenever you want.



WIRELESS BLUETOOTH® COMMUNICATIONS.

The minimal wiring needed for the BMW Motorrad communication systems is built into the System 5, System 6, System 6 EVO, Sport, DoubleR and AirFlow 2 helmets so that it is completely out of sight. For maximum comfort and freedom of movement, all data is transmitted wirelessly via Bluetooth®. The BMW Motorrad communication system is compatible with the BMW Motorrad Navigator IV, III, III plus and III plus 2008, the BMW Motorrad ZUMO, and most Bluetooth®-enabled mobile phones and MP3 players.

A HIGH-QUALITY USER EXPERIENCE.

With a battery life of 12 hours, the BMW Motorrad communication system is an endurance specialist. It also possesses excellent powers of recovery, with a full battery charge taking approximately four hours, via either the supplied mains charger or the USB port of your PC. Other benefits include background noise cancellation and speed-dependent volume control, for an excellent-quality, user-friendly audio experience even at high speeds.

A FOUR-WAY CONNECTION.

The rider's helmet (helmet 1) can be simultaneously connected to a navigation system, a mobile phone, a music player, and the passenger's helmet (helmet 2) can be connected to a phone and a music player. The result is a richer, more interactive riding experience.

- Rider and passenger can speak to each other.
- Rider and passenger can each listen to music from a different source.
- Rider and passenger can each receive calls on their own mobile phones.
- The rider can hear prompts from the navigation system.
- A maximum of two helmets, one navigation device, two mobile phones and two music players can be used simultaneously.



TECHNICAL DATA.

BMW MOTORRAD COMMUNICATION SYSTEM.

Weight:	approx. 150 g
Maximum connections:	3 per headset
Range:	approx. 10 m
Range with reduced sound quality:	approx. 30–100 m
Transmitting power:	up to 2.5 megawatts
Battery life:	approx. 10–12 hrs
Waterproof rating:	very good/IXP6
Bluetooth® Standard:	2.0
Bluetooth® Profile:	A2DP, Headset, hands-free,
Helmet compatibility:	SPP System 5, System 6, System 6 EVO, Sport, DoubleR and AirFlow 2 helmets



THE CRAZY LIFE OF LUCY GLÖCKNER.

WHEN LUCY GLÖCKNER TAKES TO A MOTORCYCLE, SHE BECOMES SOMEONE ELSE. SOMEONE WHO LOVES NOTHING MORE THAN BEING A MATTER OF MILLIMETRES FROM THE TARMAC; ACTING AS ONE WITH HER MACHINE; AND BATTLING THE OPPOSITION TOOTH AND NAIL.

From the age of three, tracks around the world have been her second home. Her father, Holger Loose, is also a renowned motorcyclist. As a child, Lucy often sat on her father's bike, as it is lined up on the grid before a big race. Yet it is not the thought of emulating her father that drew her to racing: "I just loved the atmosphere in the pitlane, and driving from track to track," comments the 22-year old, who boasts a lip piercing and cropped black hair.

THIS IS A GIRL WHO IS AIMING FOR THE TOP. Lucy began her career aged nine, on the minibike circuit. Despite being so young, she knows exactly what she wants out of life. When her chain snapped during her minibike debut, she ran back to her trailer, furious. This competitive streak went on to characterize her career, and she is never prepared to accept second best – whether racing boys or girls.

Lucy's path to the top hasn't always been easy. She has been able to take on a couple of sponsors from her father, but generally struggles for funding. She often has to make do with substandard equipment, yet her love for the sport always drives her forward. In 2008, after making the step up from 125 to 250-cc racing, she suffered a serious accident. For the first and last time in her life, she considered throwing in the towel.

A PERFECTLY TIMED OFFER FROM BMW MOTORRAD.

Nevertheless, Lucy decided to grit her teeth and was soon back competing again in the Yamaha Cup, now a part of Germany's IDM championship. She spent three years proving her mettle, and earned the full respect of her male competitors. When recuperating after a crash, she was approached by Benny Wilbers from the Wilbers Racing superbike team. He offered her a test on his outfit's BMW. "I was over the moon when Benny came to talk to me," says Lucy. After immediately impressing, she has now been a part of

the team since 2012, riding the BMW S 1000 RR in the IDM Superbike championship. Just like her hero, Max Biaggi, Lucy enjoys every moment she is out on the track, though she is equally at home in the garage. As a qualified motorcycle mechanic, she is heavily involved in setting up her bike – and her teammates' machines – before every race. Whatever Lucy does, she is utterly committed to achieving success, and if ever involved in a crash, she instinctively looks to her bike to see if she can continue.

DREAMING OF THE WORLD TITLE.

The S 1000 RR is perfectly suited to her will to win, as is the rest of the equipment supplied by BMW Motorrad. Lucy comments: "I've always loved the company's helmets and leather suits – they couldn't be better for racing. They mean I can concentrate on what matters – my riding and the track ahead."

Lucy's favourite colours are pink and green, and they summarize her character perfectly. Pink highlights her bright, loud side, while green represents hope – perfect for a woman who never gives up and dreams of competing in the World Championship one day. Her left forearm bears the words: "Mi vida loca", and in Lucy's crazy life, only one thing is certain – anything could happen.

LUCY GLÖCKNER:

Date of birth: 14.08.1990

Place of birth: Zschopau, Germany

Hobbies: motocross, snowboarding

Role model: Max Biaggi

MAJOR ACHIEVEMENTS:

2004: IG Königsklasse, 125 cc – overall winner

2006: IDM, 125 cc – 17th place overall

2007: Red Bull MotoGP Rookies Cup

2008: European Championships, 250 cc

2010: Yamaha R6 Dunlop Cup – 3rd place overall

2011: Yamaha R6 Dunlop Cup – 2nd place overall

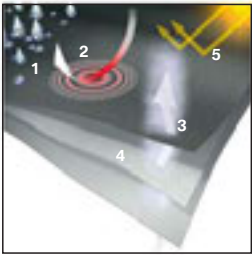
A SECOND SKIN FOR THE DISCERNING RIDER.

BMW Motorrad Rider Equipment materials.

At BMW Motorrad, we use only the finest materials for our Rider Equipment, and are continually developing and sourcing new technologies, so that you can be sure you have the very best that’s available. The wear-resistance of outer materials is particularly important here.

SCHOELLER KEPROSHIELD:

This protective composite has been specially designed for motorcycling, and combines a three-layer laminate of Kevlar (aramid), cotton and polyamide with the c_change membrane. The material mix and the innovative construction have brought about an approx. 20% improvement in abrasion, impact, tear and frictional heat resistance over predecessor products. The reduced weight also further increases rider comfort.



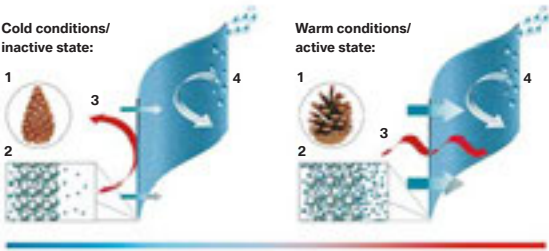
- 1 Wind and waterproof.
- 2 Highly abrasion and tear-resistant.
- 3 Excellent breathability.
- 4 c_change membrane reacts to changes in temperature and level of exertion.
- 5 coldblack technology reflects sunlight.

C_CHANGE:

Working in conjunction with Swiss textile specialists Schoeller, BMW Motorrad has developed an active membrane: c_change. It features pores that adapt their size according to the exterior temperature, thereby regulating the breathability of the clothing. The principle is the same as that of a pine cone, which opens its scales in warm weather and closes them when it is cold. This means that c_change garments allow the skin to breathe on hot days, and lock in heat when it is cooler. The membrane is also wind and waterproof, and flexible enough to be combined with fully elasticated outer materials for increased comfort.

THE HYPERKEWL SYSTEM:

The HyperKewl system uses revolutionary technology to keep riders cool for longer. The material is wetted before setting off, and holds in the moisture for up to eight hours. As this moisture then gradually evaporates, it has a pleasant cooling effect on the body. The system can be used again and again, and is incredibly long-lasting.



- In the natural world:**
 - 1 Pine cone closes.
- In the membrane:**
 - 2 Polymer structure is compressed, providing improved insulation.
 - 3 Combination of heat retention and breathability maximizes wearer comfort.
 - 4 Wind and waterproof.
- In the natural world:**
 - 1 Pine cone opens up.
- In the membrane:**
 - 2 Polymer structure opens up and becomes extremely permeable to water vapour.
 - 3 Excess body heat and moisture can be wicked away to the outside.
 - 4 Wind and waterproof.

COOL TECHNOLOGY:

These BMW Motorrad leather suits incorporate the TFL Cool system. This means that dark leathers reflect the sun's rays in the same way as light-coloured materials, preventing them from getting as hot as they normally would. Tests have shown that in bright sunlight, these BMW Motorrad suits are up to 12°C cooler than conventional leather suits. As an added bonus, the technology also significantly slows the garments' ageing process.



Infrared photography shows how BMW Motorrad clothing with TFL Cool technology (1) prevents overheating compared with a conventional leather suit (2) making you more relaxed and alert.

COLDBLACK TECHNOLOGY

With coldblack technology, dark textile suits reflect up to 80% of near-infrared sunlight. As a result, the material stays cooler for longer, and rider comfort is greatly increased.



STREETGUARD 3 SUIT



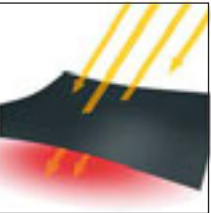
The exclusive use of Schoeller Keproshield three-layer laminate – featuring Kevlar (aramid), cotton and polyamide in conjunction with the c_change membrane – makes the Streetguard 3 suit an unbeatable all-rounder. In addition, it outperforms its predecessor by around 20% in the vital areas of abrasion resistance, drop protection, tear resistance, ripstop capability and friction heat resistance. Designed, cut and manufactured to be perfect wear in all situations and any weather.



STREETGUARD 3 SUIT

- Outer material Keproshield and Dynatec in black with coldblack® finish
- Windproof, waterproof and extremely breathable with the intelligent c_change membrane
- Soft shell material at pocket openings and insides of sleeve cuffs
- Removable NP protectors at shoulders, elbows, back, hips and knees (adjustable to three different heights)
- Zipped protector pocket for back protector
- Coccyx protector retrofittable
- Jacket with Storm® zipper: waterproof and windproof, resistant to UV light
- Highly water-repellent AQUAzip® fasteners on the outside pockets
- Reflective fabric on front/back/trouser legs
- Windproof and waterproof removable storm collar
- Waterproof ventilation zips
- Complete with removable 3M Thinsulate thermal lining
- High trouser waistband with fleece lining
- Radiation-shielded, waterproof mobile-phone pocket plus two waterproof inside pockets in the jacket
- Connecting zip in two lengths
- Colour, jacket: Black
- Trousers: Black
- Sizes (ladies): 36–46, 72–88, 18–22
- Sizes (men): 46–66, 98–118, 25–32

INNOVATIVE COLDBLACK TECHNOLOGY



Without coldblack technology

This innovative surface coating reflects up to 80% of the sunlight striking dark materials. As a result, the outer material does not heat up as much, meaning the rider remains comfortable, and therefore more alert.



With coldblack technology



With its three-layer laminate and removable thermal jacket, the TourShell suit is ideal motorcycling wear all year round. The suit guarantees maximum safety, thanks to the use of highly abrasion-resistant Cordura and the removable NP protectors at the shoulders, back, elbows, hips and knees. These protectors can be adjusted to three different heights.

TourShell SUIT

- Sporty, waterproof touring suit for year-round use
- Abrasion-resistant material made up of polyamide and elastane as a highly elastic three-layer laminate
- C.A.R.E. climate membrane (windproof, waterproof and breathable)
- Areas at risk in the event of a fall reinforced with abrasion-resistant Cordura
- Removable NP protectors at shoulders, elbows, back, hips and knees (adjustable to three different heights).
- Removable, padded thermal jacket, can also be worn separately
- Removable neck warmer
- Waterproof ventilation zips on jacket
- Sleeve cuffs, collar and trouser waistband adjustable with elasticated Velcro fasteners
- Reflective print on jacket and trousers
- Connecting zip (40 cm)
- Men's and women's versions
- Special ladies' cut
- Ladies' colours (jacket/thermal jacket): Black/Plum, Deep Sea/Black
- Mens' colours (jacket/thermal jacket): Black/Mineral Grey, Mineral Grey/Deep Sea.
- Colour, trousers: Black
- Sizes (ladies): 34–46, 17–22 (Deep Sea only 34–46)
- Sizes (men): 46–60, 98–110 (Mineral Grey only 46–60)



The very light, padded inner jacket provides reliable protection against the chill on cold days, and can be worn separately. When not required, it is easily stored in the large inner pocket.



Mineral Grey/Deep Sea



Black/Plum



Deep Sea/Black



The AirFlow suit is perfect for keeping cool when the temperature rises. The clever coldblack® finish of the black version prevents the material from heating up. The NanoSphere coating of the silver version keeps dirt at bay.

AirFlow SUIT

- Summer suit
- Stretch material
- Highly wear-resistant Dynatec outer material
- Black suit with coldblack finish
- Silver-coloured suit with NanoSphere finish
- AirTex mesh material
- Removable NP protectors at shoulders, elbows, hips and knees (adjustable to three different heights)
- NP ProAir back protector with ventilation openings
- Air mesh lining for excellent air circulation
- Zipped protector pocket for back protector
- 3M reflective stripes on jacket and trousers
- Two integrated straps, so that it can be carried like a rucksack upon arrival
- Waistband of trousers steplessly adjustable
- Jacket: two outside pockets, one radiation-proof mobile-phone pocket, two inside pockets, one large zipped pocket low at back
- Trousers: two zipped pockets
- One waterproof pocket lining
- Full-length zip fastener
- Connecting zip (40 cm)
- Colours: Black, Silver
- Sizes (ladies): 34–46
- Sizes (men): Black 46–66, 98–118, Silver Print 46–60



CoverAll SUIT



The one-part CoverAll suit is simply worn over standard clothing (e.g. office wear), and is as functional as it is flexible. It is waterproof, windproof and breathable, and keeps the body warm and dry at all times. Removable SC protectors and a retrofittable NP back protector maximize safety, while reflective areas on the shoulders and back improve visibility. The CoverAll suit is the perfect solution for commuters.



CoverAll SUIT

- One-piece suit
- Three-layer laminate with Cordura 500 outer material
- Windproof, waterproof and breathable thanks to C.A.R.E. climate membrane
- Inner pockets with mesh lining
- Removable SC protectors at shoulders, elbows, hips and knees (adjustable to two different heights)
- NP ProAir back protector can be retrofitted in back pocket
- Welded protector pockets
- 3M reflective prints on shoulders and back
- Waterproof and windproof Storm zips
- Long front zip and two leg zips make it easy to put on
- Adjustable waist
- One water-repellent breast pocket outside and inside, one sleeve pocket on right forearm, two trouser pockets
- Colour: Black
- Sizes: Unisex XS–XXXL



GS Dry SUIT



New

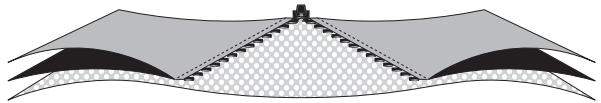
The GS Dry suit provides comfort and protection against the elements for both on-road and enduro riding. It features a unique ventilation system with a Z-liner construction, providing a direct flow of air to the upper body, and incorporates the latest NP2 protectors and reinforced material in the most vulnerable areas, so that it provides excellent protection for both on and off-road riding. The reflective print on the chest, sleeves and back meets international standards, while any important items can be stored securely and at arm's reach in the suit's spacious pockets.

GS Dry SUIT

- Cordura 500 with breathable coating
- Windproof, waterproof and breathable thanks to C.A.R.E. Climate membrane
- NP protectors on the back, shoulders, elbows, hips and knees
- Stretch inserts
- Reflective print and fold-out reflective areas in both breast pockets
- Material reinforced in vulnerable areas
- Leather trim on the inside of the knees
- Ladies' colours: Black/Anthracite, Grey/Red
- Men's colours: Grey/Black, Anthracite/Yellow/White
- Sizes (ladies): 34-46, and 17-22 (Black/Anthracite only)
- Sizes (men): 46-60, and 98-110 (Grey/Black only)



Button-on reflective areas are stored in the breast pocket. When folded out, these increase the reflective surface of the GS Dry suit to over 150 cm², ensuring it complies with French regulations due to come into force in 2013.



Waterproof-taped ventilation zips on the chest and back also open the C.A.R.E. climate membrane, ensuring a direct flow of air to the upper body.



New



New



New

RALLYE SUIT



New



New

RALLYE SUIT

- Specially developed for off-road use
- Outer material Cordura, optimized by BMW Motorrad
- Jacket with removable sleeves
- Trousers with stretch inserts and leather patches
- With removable NP2 protectors at the shoulders, elbows, back, hips and knees
- Silicon strip on insert seam prevents suit riding up
- Stretchable, breathable mesh lining
- Ventilated in various places
- Fully adjustable
- Breathable, windproof and waterproof C.A.R.E. climate membrane (removable)
- Reflective material
- Pocket in back for TrinkPak drinking system
- Two waterproof outside pockets on the jacket
- Connecting zip (40 cm)
- Colours and sizes: Blue/Grey (46–66, 98–118, trousers 24–27) Grey/Red (46–60)



New



When tackling challenging off-road trails, it's essential that you can rehydrate whenever you need to. The Rallye suit features a handy, exterior back pocket designed specially for the TrinkPak Hydra drinking reservoir (available separately, see p. 95). The tube can be threaded through a series of loops and eyelets to the chest area, so that riders can access fluids quickly and easily, without dismounting.



On or off-road, there's no beating the Rallye suit. Now it offers an even greater level of safety and functionality, with the new NP2 protectors delivering optimum protection and an improved fit. As such, it is a must for enduro riders who refuse to let the weather spoil their fun.



The Atlantis 4 is an elegant but trendy interpretation of a classic design. The fast-drying nubuck cowhide leather is sealed with taped seams and rubber-lined zip fasteners, so that riders can stay dry during short rain showers without needing any rain overgarments. Stretch zones increase the wear comfort of this breathable suit. The NP protectors at the shoulders, elbows, hips and knees are removable, as are the NP2 protectors on the back.

ATLANTIS 4 SUIT

- All-weather touring suit in hydrophobic 1.2–1.4-mm nubuck cowhide
- Naturally breathable leather regulates body temperature and moisture extremely effectively
- Removable NP protectors for shoulders, elbows, hips and knees (two height positions); removable NP2 protectors for back; coccyx protector can be retrofitted
- Reflective strips on shoulders
- Adjustable waist, sleeves and trouser cuffs
- All-around connector zip at waist for joining the two halves of the suit together
- Stretch zones for enhanced comfort
- Colour: Anthracite
- Sizes (ladies): 36–46
- Sizes (men): 46–66, 98–118, 25–32



HYDROPHOBIC LEATHER



A treatment which renders leather water-resistant. BMW uses the vat immersion technique, with 3M Scotchguard as the active agent. The best hydrophobic results are obtained when only the leather fibres are encapsulated and the pores are left open, helping to maintaining breathability.



DoubleR SUIT



DoubleR SUIT

- Body-hugging one-piece race suit in BMW Motorrad motorsport design
- Highly abrasion-resistant kangaroo leather, approx. 1.0 mm thick
- Large Dynatec stretch inserts
- Black leather with TFL cool technology
- NP protectors for shoulders, elbows, hips, knees and back
- Hump with zipped pocket to accommodate a BMW Motorrad Neck Brace
- Perforated areas at chest, back and arms to keep body cool
- Includes windblocker body warmer and high-quality tote bag
- Plastic-encased Inox special-steel sliders at shoulders and elbows and hard plastic sliders at the knees
- Colours: Blue/White/Red, Black/White/Red
- Sizes: 46–56, 98–110



DoubleR SKIN UNDERSUIT

For product information, see page 78

The windblocker undershirt and a handy tote bag, featuring carry straps and a display window, are supplied with the suit. The highly breathable, temperature-regulating DoubleR Skin Undersuit is also available in sizes S–XXL.

SPORT 2 SUIT



SPORT 2 SUIT

- Two-piece racing suit with BMW Motorrad Motorsport colours
- 70% cowhide nappa leather (1.2 mm), 30% abrasion-resistant kangaroo leather (approx. 1 mm)
- TFL cool technology
- NP protectors stitched in at shoulders, elbows and knees, removable hip and back protector, retrofittable coccyx protector
- Integrated, shock-absorbing material at collarbone and on chest
- Plastic-covered INOX stainless steel slider at shoulders and elbows
- Front zip can also be used as air vent
- Leather stretch inserts for maximum comfort at the shoulders, sleeves, kidneys and knees
- Small hump with zipped pocket to accommodate a BMW Motorrad Neck Brace
- Colour: Black/White/Red
- Sizes (men): 46–60, 102–110, 27–30



The two-piece racing suit in BMW Motorrad Motorsport colours features highly abrasion-resistant kangaroo and cowhide nappa leather. NP protectors stitched in at the shoulders, elbows and knees, removable hip and back protectors, and a retrofittable coccyx protector offer the proven BMW Motorrad level of protection quality. The INOX stainless steel sliders are covered in plastic. The front zip, which can also be used as an air vent, and the TFL Cool finish keep the body cool in the suit, even in high temperatures.



START SUIT



This leather suit is the perfect introduction to the world of motorsport. It is more than a match for any challenge. Made with 100% cowhide nappa leather, it features NP protectors stitched in at the knees, shoulders and elbows, and removable hip and back protectors. A number of leather and aramid stretch inserts ensure a streamlined, comfortable fit. Ideal for short trips and longer tours alike.



START SUIT

- Sporty leather two-piece suit
- 100% cowhide nappa leather (1.2 mm)
- NP protectors stitched in at shoulders, elbows and knees, removable hip and back protector
- Special ladies' cut; trousers have additional leather stretch inserts at the hips
- Integrated, shock-absorbing material at collarbone
- Retrofittable hard plastic knee sliders
- Leather stretch inserts for maximum comfort
- Aramid stretch inserts on the arms and legs
- Connector zip
- Seams are double stitched or flat seams
- Colour, jacket: Ladies' Black/Red, Men's Black/Blue, Black/Grey
- Colour, trousers: Black
- Sizes (ladies): 34–46
- Sizes (men): 46–66 (jacket: Black/Blue, Black/Grey only in 46–60)



A WORLD OF YOUR OWN.

TIME SPENT OUT ON YOUR MOTORCYCLE, IS TIME DEDICATED TO YOU ALONE. WHETHER ON THE STREET OR THE RACETRACK, YOU MAKE A CLEAR STATEMENT ABOUT WHO YOU ARE AND WHAT YOU STAND FOR. YOUR EQUIPMENT IS A BIG PART OF THIS, SO IT'S IMPORTANT THAT WHAT YOU WEAR IS AS INDIVIDUAL AS YOU ARE. WITH OUR WIDE VARIETY OF GARMENTS, YOU CAN BE SURE THAT YOU ARE ALWAYS TRUE TO YOURSELF, WHEREVER YOUR BIKE MAY TAKE YOU.

BMW Motorrad can kit you out from head to toe. Our product range includes helmets, suits, gloves and boots, and whether you're a newcomer to motorcycling or have spent years on the track, you'll find we have the right product for every taste and requirement. We also offer a wide variety of sizes and cuts for both men and women. Putting together your own tailored outfit couldn't be easier, and ensures you enjoy a personal motorcycling experience every time you head out.

Endless variations.

Within the enduro sector, the GS Dry and Rallye suits give an indication of the huge variety of items on offer. The GS Dry is aimed primarily at entry-level and intermediate riders, and is a great all-round suit. Its unique, functional design reflects a love of adventure, while the latest NP2 protectors, stow-away reflective areas in the chest pocket, and a unique ventilation system with waterproof taped seams and a Z-liner structure, add up to a fantastic package for newcomers to the scene.

The Rallye suit meets the very highest demands and is designed for riders who insist on impeccable performance. Featuring a waterproof, removable insert, it can be modified in a host of ways – removable sleeves for example, mean the jacket can be easily converted into a body warmer. As such, riders are prepared for every eventuality.

Motorsport to the power of three

If you like a sportier edge to your riding, you'll love the BMW Motorrad Rider Equipment range. Whatever your requirements, we have the perfect product. The Start suit offers novices an excellent level of protection, with high-quality impact and abrasion-resistant leather, along with shock-absorbent NP protectors and a variety of useful features. As well as two different colour schemes and a number of size options for men, we also offer the Start suit in exclusive ladies' sizes and colours that match the Sport 2 suit perfectly.

The Sport 2 suit is made of kangaroo and cowhide leather, and goes a step further, providing full protection to the knees with NP protectors, stainless steel sliders and rigid plastic sliders. It bridges the gap perfectly between the comfort of a two-piece suit, and the safety of a one-piece.

If battling lap times on the track is your passion, look no further than the DoubleR one-piece racing suit in BMW Motorrad Motorsport design. Standing at the cutting edge of both safety and design, it is available in two colour schemes. It allows riders to concentrate fully on the tarmac ahead, safe in the knowledge that whatever happens on the track, their equipment will always take pole position.

URBAN JACKET

VENTING JACKET

AirShell JACKET



- Waterproof jacket for urban use
- Classic design
- Wear-resistant polyamide/ polyester fabric
- Windproof and waterproof, C.A.R.E. climate membrane
- NP protectors at shoulders and elbows
- NP Air back protector can be retrofitted
- Padded, removable thermal collar
- Zip at cuffs and collar with magnet to adjust fit
- Two high-quality waterproof outer pockets, one waterproof inner pocket, all zipped
- Reflective Anthracite print on the sleeves
- Connecting zip (40 cm)
- Colour: Black
- Sizes: Unisex S-XXXL



- Textile motorcycling jacket for extreme summer temperatures
- Abrasion-resistant Cordura mesh and elastic Dynatec
- Large, air-permeable mesh material for optimal ventilation
- Removable SC protectors at shoulders and elbows
- Removable NP Air back protector
- One breast pocket, two side pockets, each with zip
- Reflective strips at the front and back for maximum visibility
- Connecting zip (40 cm)
- Fitted ladies' jacket, straight-cut men's jacket
- Colour: Black
- Sizes (ladies): XS-XL
- Sizes (men): S-XXXL



- Specially developed material: double-woven fabric, with polyester on the upper side for excellent colour/light-fastness, interwoven with a second layer of polyamide for abrasion resistance
- Large AirTex inserts
- Windproof and waterproof, C.A.R.E. climate membrane
- Removable NP protectors at shoulders and elbows
- Pocket for retrofittable NP back protector
- Reflective material
- Adjustable waist and cuffs
- Connecting zip (40 cm)
- Colour: Black/Neon
- Sizes: Unisex S-XXXL



BOULDER 2 NEON JACKET



- Specially developed material: double-woven fabric, with polyester on the upper side for excellent colour/light-fastness, interwoven with a second layer of polyamide for abrasion resistance
- Windproof, waterproof and breathable, thanks to a removable insert with C.A.R.E. climate membrane
- Removable NP protectors for shoulders, elbows and back
- Adjustable at collar, sleeves and waist
- Two side pockets, one breast and one sleeve pocket, plus one waterproof pocket in insert
- Reflective material around the shoulders
- Connecting zip (40 cm)
- Colour: Neon Yellow
- Sizes: Unisex S-XXXL



BOULDER 2 JACKET



- Cotton and polyamide, waterproofed with wax finish
- Windproof, waterproof and breathable, thanks to a removable insert with C.A.R.E. climate membrane
- Removable NP protectors for shoulders, elbows and back
- Adjustable at collar, sleeves and waist
- Two side pockets, one breast and one sleeve pocket, plus one waterproof pocket in insert
- Reflective material around the shoulders
- Connecting zip (40 cm)
- Colour: Black/Olive
- Sizes: Unisex S-XXXL

CLUB LADIES' LEATHER JACKET



- Short motorcycling and casual leather jacket made of soft cowhide (1 to 1.2 mm thick)
- Ultra-lightweight SC protectors for shoulders and elbows, NP ProAir back protector can be retrofitted
- Figure-hugging cut, with adjustment via two zip fasteners
- Three zipped outer pockets, two zipped inner pockets
- Lined throughout
- Connector zip: 40 cm
- Colour: Black
- Sizes: XS-L

CLUB MEN'S LEATHER JACKET



- Short motorcycling and casual leather jacket made of soft cowhide (1 to 1.2 mm thick)
- Ultra-lightweight SC protectors for shoulders and elbows, NP ProAir back protector can be retrofitted
- Slim, masculine cut
- Four zipped outer pockets, two zipped inner pockets
- Lined throughout
- Connector zip: 40 cm
- Colour: Black
- Sizes: S-XXXL

SUMMER 3 TROUSERS



- Functional summer motorcycling trousers
- Abrasion-resistant material with high cotton content
- Double-thickness material at the knee and seat
- Removable SC protectors at knees (two height positions) and hips
- Trouser bottoms detachable at knee with zip
- Woven belt with BMW Motorrad branding on the buckle
- Width adjustable at bottom
- Connecting zip (40 cm)
- Colours: Sahara, Black
- Sizes: Unisex XS-XXXL

ALLROUND TROUSERS



- Dynatec with breathable coating
- Windproof, waterproof and breathable thanks to C.A.R.E. climate membrane
- Double-thickness material at the knee and seat
- Removable SC protectors at knees (two height positions) and hips
- Width adjustable at waist and bottom
- Two zip pockets at the side, water-resistant
- Connecting zip (40 cm)
- Special ladies' and men's cuts
- Reflective print on lower side seam
- Soft shell stretch insert in trouser waistband
- Can be worn with any BMW Motorrad jacket
- Colour: Black
- Sizes (men): S-XXXL
- Sizes (ladies): XS-XXL



CITY 2 DENIM TROUSERS



- Casual motorcycling trousers in blue-jeans look
- Wear-resistant material, blend of cotton and Cordura
- Gradually acquires a used-denim look
- Removable NP protectors, adjustable to two different heights at the knees
- Includes belt
- Connecting zip (40 cm), combinable with all BMW Motorrad jackets
- Adjustable width at bottom
- Colour: Indigo (slightly stone-washed effect)
- Sizes: Unisex XS-XXXL

CITY 2 TROUSERS



- Summertime motorcycling trousers
- Wear-resistant blend of cotton and Cordura
- Removable NP protectors, adjustable to two different heights at the knees
- Four zipped pockets
- Includes belt
- Connecting zip (40 cm), combinable with all BMW Motorrad jackets
- Adjustable width at bottom
- Colour: Gun
- Sizes: Unisex XS-XXXL



WHEN RIDING A MOTORCYCLE, NOTHING IS MORE IMPORTANT THAN SAFETY. THE BIKE ITSELF HAS A KEY ROLE TO PLAY HERE, WHILE PROTECTIVE CLOTHING IS OF PARAMOUNT IMPORTANCE. THE CE LABEL IS A EUROPEAN-WIDE STANDARD THAT ENSURES MOTORCYCLISTS CAN HAVE TOTAL CONFIDENCE WHEN PURCHASING RIDER EQUIPMENT.

The CE logo is used to clearly identify products that fulfil the requirements set out by the European Union. To apply the label to their goods, manufacturers must ensure products comply with these regulations and submit them to a variety of tests.

BMW Motorrad has each one of these tests carried out by an independent institute that specializes in assessing motorcycling equipment.

GUARANTEEING SAFETY.



MAXIMUM ATTENTION TO DETAIL.

In addition, BMW Motorrad internally checks every component used in its protective clothing, whether it bears the CE logo or not. This rigorous commitment to quality means that even equipment without CE lettering meets the very highest standards, often far surpassing international norms.

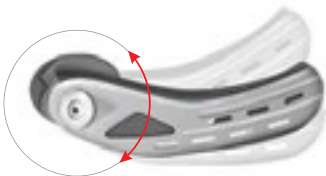
When buying any equipment, it is important to remember that there are various levels of CE certification, with level 2 superior to level 1. Both, however, offer excellent levels of protection – which is the number one concern at BMW Motorrad.



- High-quality boot for sport-style riding
- Special synthetic leather upper, 1.6 mm thick, perforated in places
- Perforated, breathable lining
- Patented joint safety systems TCS and MCS minimize the risk of injury in an accident, while offering freedom of movement
- Removable side, calf and heel abrasion protectors
- Anatomically shaped shin protector
- Abrasion-resistant sole
- Zip fastening and large Velcro panel for easy on/off
- Interior lacing system for optimum fit
- Colour: Black/White
- Sizes: 39–49

MCS METATARSAL CONTROL SYSTEM

MCS was designed to prevent injuries to the metatarsal bones. The system consists of a rigid polyamide base with a rotation point level with the ankle joint, which controls the up and down movement of the foot, and prevents excessive pressure from being exerted on the metatarsals. The positioning of the rotation point maximizes freedom of movement and ensures a feeling of control when making gear changes. A special high-strength steel is used for the side abrasion protectors. Air vents prevent these from overheating when scraping on the ground, and channel cool air to the sole via built-in ventilation channels.



- Sporty boots with removable side and heel protectors
- Upper: cowhide leather (approx. 2.2 mm), synthetic leather at the ankle
- Waterproof, windproof and breathable GORE-TEX® membrane
- Rigid ankle protection with the Torsion Control System (TCS)
- Inner toe cap
- Shock absorber at the heel
- Washable insole
- Colour: Black
- Sizes: 39–49



The double heel-piece is reinforced with carbon.



TCS TORSION CONTROL SYSTEM*:

This system consists of two heel pieces and a two-part frame that work perfectly together. The plastic cuff protects and stabilizes the foot and largely prevents the ankle from twisting or extending beyond its natural range of motion, significantly reducing the risk of injuries to the ankle. For maximum comfort, the individual components of the frame can move in relation to one another, and so it does not unnecessarily restrict the foot's freedom of movement.

* A patent for TCS is held by Novation Motorbike Spa

COMFORT AND PROTECTION:

TCS and MCS allow the foot to tilt from side to side (left-hand illustration) and forwards and backwards (right-hand illustration), while minimizing the risk of injury when the foot is subjected to extreme pressures.

Neutral position



Neutral position



Plastic frame with moving parts

SECURITY EVO G3 BOOT



- A racing boot with safety shell technology
- Removable inner boot
- Inner and outer boot also available separately
- Replacement sliders (including reinforced version) available separately
- Colour: Black/White
- Dimensions: 37–48

Inner boot

- Torsion-resistant aramid hard shell
- Four-layer shin protector
- Impact-absorbing insert in calf and heel areas
- Sturdy hinged shaft mechanism
- Aramid stretch zone for freedom of movement
- Anatomically formed spherical heel bed
- Three-layer aramid webbing in the vulnerable toe area

Outer boot

- Hard-wearing kangaroo leather
- Polyurethane-reinforced gear-shift area
- Special non-slip racing sole with rounded recessed edges
- Embroidered “BMW Motorrad” lettering

TOUGH ON THE OUTSIDE,
SOFT ON THE INSIDE.

The Security Evo G3 is not one boot, but two. And the result is twice the safety. The inner shoe has an aramid hard shell for maximum strength and dependable protection against impact and pressure. The outer shoe is made of kangaroo leather which offers even more abrasion protection than cowhide leather of the same thickness.

Another benefit of the two-part construction is that it makes the Security Evo G3 easier to repair in the event of an accident. And this sports boot is also more than equal to the demands of track riding.



New



- Entry-level touring boot for year-round use
- Upper material made of hydrophobic cowhide leather and Cordura for improved ventilation and lower weight
- Ankle and shin reinforced with moulded plastic and foam
- GORE-TEX® membrane: waterproof and highly breathable
- Heel and toe reinforced
- Flex zones at heel and instep for more freedom of movement
- Reflective material on heel
- Colour: Black
- Sizes: 35–48

PRO TOURING 2 BOOT



- Full-grain hydrophobic soft cowhide (approx. 2.0 mm)
- GORE-TEX® membrane, windproof, waterproof and highly breathable
- Large shin protector, with additional stiffening and foam padding
- Reinforced in gearshift area
- Soft velour lining around opening
- Washable, anatomically formed insole with antibacterial function
- Flex zones at heel and instep
- Abrasion-resistant heel protector
- Extra-slim fit and raised insole in special ladies' boot
- Colour: Black
- Sizes (men): 39–48
- Sizes (ladies): 36–41



Men's boot



Ladies' boot



RALLYE GS PRO BOOT

With anatomically shaped calf and shin protectors, plus a 2-mm midsole with a spring-steel reinforcement, the Rallye GS Pro enduro boot delivers flawless protection and stability for off-road riding. Its unique articulated ankle joint and the softly padded, removable neoprene inner with gel cushion ensure maximum comfort, even when walking. To improve stability, the shaft is wide enough to accommodate a standard leg brace, while the boots can be quickly pulled on and off via a simple fastening system at the front, even when wearing gloves.



New

- High-quality enduro boot
- Full-grain cowhide upper
- Anatomical plastic protectors, with extensive reinforcement
- Removable, washable inner boot made of flexible neoprene with air mesh lining
- Soft, smooth cuff around opening helps keep dirt out
- Articulated ankle joint
- Shaft is wide enough to accommodate a leg brace
- Easy front-closing mechanism
- Colour: Black/Grey
- Sizes: 41–48



SANTIAGO BOOT



- 2.3–2.5-mm-thick hydrophobic cowhide leather
- Waterproof and windproof with GORE-TEX® membrane
- Inserts 100% Kevlar
- Removable insole
- Quick-action aluminium fasteners* with memory effect
- Stainless steel toe caps with logo*
- Colour: Black
- Sizes: 38–47

*Also available as spare part



URBAN BOOT



New

- Sturdy short-shaft boot made of 100% cowhide leather
- Hydrophobic, slightly roughened leather
- Heel and toe reinforced
- Stretch material around the ankle for increased comfort
- Functional lining, quick-drying and breathable
- Thick rubber sole with strong tread
- Moisture-wicking, shock-absorbing insole
- Reflective stripes on heel
- Colour: Matt Anthracite
- Sizes (men): 41–48
- Sizes (women): 37–40
- Slim fitting



AirFlow 3 BOOT



- Outer material is a combination of leather and textile
- AirTex material as mesh insert
- Shin and ankle reinforcement
- Toecap and heel reinforcement
- Reflective material on heel
- Removable, anatomical insole
- Ankle height approx. 20 cm
- Colour: Black
- Sizes: 36–48



CITY BOOT



- Light leather motorcycling boot for city wear
- Leather lining and leather insole
- Rubber-treaded sole with leather insert
- Elastic zone on ankle and zip
- Lightweight ankle protection
- Lightweight ankle reinforcement
- Colour: Black
- Sizes: 38–47



SneakerX²



- High-top leather sneaker for urban wear
- 100% full-grain soft cowhide leather, mildly hydrophobized
- Light and highly breathable
- Foam-padded ankle and opening
- Lightly treaded rubber sole
- Removable, perforated leather insole
- Heel reinforced with leather on inside
- Reflective stripes on heel
- Colour: Black
- Sizes (men): 39–48



SneakerX



- High-top sneaker for motorcycling and leisure wear, lightweight and breathable
- Leather/fabric mix
- Breathable lining
- Removable, washable insole with antibacterial surface, underside structured for improved air circulation
- Reinforced in gear-shift area
- Slightly reinforced at ankle and toecap, with stronger reinforcement at heel
- Colour: Black
- Sizes: 35–48

There's no getting away from the fact that motorcyclists are vulnerable road users. By definition though, they are more adventurous than most, so in pursuit of that fastest lap time, successful off-road adventure or new country to explore, they push their own boundaries, safe in the knowledge that their rider equipment will look after them – should the need arise.

Ever since it started making motorcycle clothing and accessories more than 30 years ago, BMW Motorrad has always applied the highest standards when designing and manufacturing all its products, with a philosophy that comfort and protection is everything.

Our C.A.R.E. stamp is our own seal of approval that reflects the years of research, development and testing that goes into every one of our products. C.A.R.E. stands for Concept of Advanced Rider Equipment, and represents our core value of making sure that every item we produce is safe, durable, comfortable and weatherproof.

Safety is, of course, the number one priority when developing BMW Motorrad Rider Equipment – from the materials selected to the testing methods employed. Industry safety standards are high, but ours are higher, which is why we select only the finest quality materials – such as Keprosshield, or specially treated tear-resistant leather – and then test them to destruction using our own dedicated facilities. This allows us to ensure that each and every one of our products meets BMW Motorrad's strict safety standards, which are far more stringent than industry norms. Only then will the garment receive the C.A.R.E. stamp of approval.

The thought and innovation behind our products come from a dedicated research and development team that understands motorcyclists' needs when it comes to clothing – because they are motorcyclists themselves. For example, take a look at your fingers. When resting, they are not actually straight, but curve forwards – and so do our gloves, which are also specially stitched to minimize pressure on the hands.

Our new NP2 protectors are another good example. They are so soft you won't even know they're there. The fact is, you don't want to notice them: you just want to know that they are there, should you ever need them. The soft, flexible, shock-absorbent foam shapes itself around the body's joints. In some cases, it is capable of absorbing twice the impact energy of other protectors on the market, delivering outstanding safety performance.

We want you to enjoy riding your motorcycle – whatever the weather – so we put a premium on protecting you from the elements. Details you wouldn't even notice (unless they weren't there) include wind and waterproof zips, gaiters, waterproof seams and fully breathable fabrics that keep the rain out, while allowing body heat and moisture to escape – and some of them are even capable of regulating body temperature.

In short, our aim is to develop advanced clothing that keeps you warm and dry in cold and wet conditions, and cool and focused in the heat. Because we believe that a comfortable rider is a safer rider.

"Comfortable" is certainly not a word that can be used to describe the motorcycle clothing of the past, but it's important that motorcyclists aren't distracted by poorly fitting equipment. It is, and always has been, our intention for BMW Motorrad Rider Equipment to feel like a second skin for the discerning rider. Thanks to modern, high-quality materials and exclusive, functional designs, you'll look great – and feel even better – wearing quality clothing that lasts and lasts.

When all is said and done, you get what you pay for. It may not be standard within the industry to put so much effort and expertise into clothing products, but we know you wouldn't settle for second best from your "crumple zone" and neither will we. We are constantly working – in the laboratory and out on the road, trail and racetrack – to further develop our existing technology and create new fabrics so that our customers can benefit in years to come. At the end of the day, it's all about C.A.R.E.

C.A.R.E. BY BMW MOTORRAD – PROTECTION YOU CAN RELY ON.



DoubleR GLOVE



- Hard-wearing yet flexible sports glove
- 100% kangaroo leather
- Tough stingray leather on palm, with Kevlar
- Kevlar carbon hardshell at the knuckles
- Plastic shell on wrist
- Impact-absorbing SuproTec foam on the back of the hand, thickness varies depending on function and zone
- Stretch inserts for a more comfortable fit
- Colours: Blue/White/Red, Black
- Sizes: 6/6½–12/12½



ProSport GLOVE



- Sporty, highly breathable touring glove made of abrasion-resistant cowhide leather (approx. 0.8 mm)
- Double-thickness leather on edge and ball of hand
- Soft, three-part knuckle protector with up to 8 mm of shock-absorbing foam
- Foam on backs of fingers (approx. 3 mm), with breaks at knuckles for increased flexibility
- Palm unlined for a firmer grip
- Visor wiping surface on both thumbs made of soft suede
- Colour: Black
- Sizes: 6/6½–12/12½

RALLYE GLOVE



- Unlined summer glove specifically designed for off-road riding
- Back of hand features a combination of stretchable materials
- Hard-wearing kangaroo leather palm
- Protectors and foam padding on back of hand
- SuperFabric in areas at risk in the event of a fall
- Ventilation between fingers
- Short neoprene cuff with Velcro fastening
- Colours: Black/Anthracite and Black/Grey/Red
- Sizes: 6/6½–12/12½



New



GS Dry GLOVE



New



- Enduro glove made of leather/textile blend
- Windproof, waterproof and breathable with GORE-TEX® membrane as part of a three-layer laminate
- Perfect fit and easy to put on and take off thanks to GORE-TEX® X-TRAFIT™
- Abrasion-resistant SuperFabric on the ball of the hand, lined with memory foam
- Soft knuckle protector
- Colours: Black/Anthracite and Black/Red/Anthracite
- Sizes (men): 8/8½–12/12½
- Sizes (ladies): 6–8

ProSummer GLOVE



- Lightweight touring glove
- Goatskin leather/nylon stretch material blend
- Waterproof, windproof and highly breathable GORE-TEX® X-TRAFIT™ membrane
- Light, functional lining
- Knuckles with shock-absorbing Temperfoam
- Crease-free fit makes it easy to pull on and off
- Doubled leather
- Special ladies' cut
- Rubber wiper lip
- Reflective stripes
- Colour: Black
- Sizes (men): 8/8½–12/12½
- Sizes (ladies): 6–8



New



ATLANTIS GLOVE



- Back: soft suede/nubuck, palm: smooth cowhide
- Windproof, waterproof and breathable with hydrophobic leather outer and GORE-TEX® X-TRAFIT™ membrane inner
- Doubled cuff, with soft shell
- Kangaroo leather tips on middle and index fingers for better grip
- Rubber visor wiper on left index finger
- Leather doubling in vulnerable areas
- Backs padded with Suprotec foam
- Special stitching ensures no pressure points on fingers
- Colour: Anthracite
- Sizes: 6/6½–12/12½



ProWinter GLOVE



New

- Winter glove with excellent thermal insulation, made from a combination of leather and fabric
- Windproof, waterproof and breathable GORE-TEX® membrane
- Thinsulate padding with additional aluminium layer
- Reflective stripes
- Soft shell cuff
- Fleecy lining
- Finger tips with Gripster leather from Pittards for better hold
- Double cuff
- Fingers with pronounced forward curvature
- Rubber wiper lip and suede wiping area on left thumb
- Colour: Black
- Sizes: 6/6½–12/12½



ALLROUND GLOVE



- Waterproof touring glove
- Outer material is a combination of leather and textile
- With waterproof and windproof C.A.R.E. Climate Membrane
- Fingers made of leather
- Knuckles: Cordura with Suprotec foam backing
- Double thickness leather on the palm in the areas most at risk in case of a fall
- With Keprotec padding at the ball of the hand
- Rubber wiping lip on the index finger
- Lightly padded
- Large reflective area
- BMW logotype on Velcro fastener
- Colour: Black
- Sizes: 6/6½–12/12½



AirFlow GLOVE



- Lightweight summer glove for temperatures above 20°C
- Pittards leather and AirTex mesh
- Perforations between the fingers
- Comfortable Cordura stretch on the fingers and knuckles, with foam backing
- Unlined palm for improved grip
- Double thicknesses of material at the ball of the hand, the edge of the hand and the little finger
- Thumb made of Cordura stretch with Clarino wipe leather
- Short neoprene cuff for improved fit
- Leather strap for adjustment
- Colours: Black, Silver
- Sizes: 6/6½–12/12½



URBAN GLOVE



- Short leather glove for warm-weather riding
- Upper hand and palm made of soft goatskin leather
- Double-thickness suede on edge and palm of hand
- Palm unlined for a firmer grip
- Perforations between the fingers
- Adjustable fit at wrist
- Suede index finger tip
- Colour: Black
- Sizes: 6/6½–12/12½



SILK UNDERGLOVE

- For transitional periods of the year, in combination with motorcycling glove
- Made of pure silk
- Colour: Black
- Sizes: 7–11

Cool Down VEST

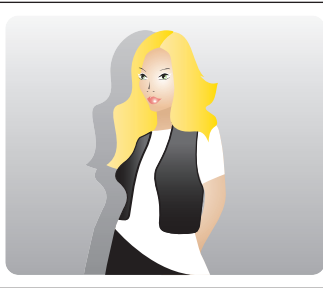
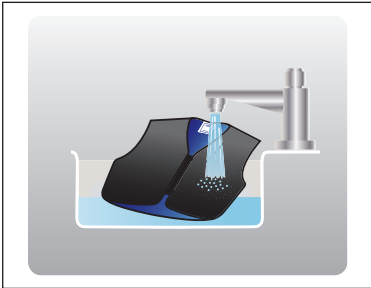


This revolutionary functional vest uses evaporation to cool riders. When water is applied to the jacket, the HyperKewl system locks in the moisture and stores it for up to eight hours, reducing heat by 6 to 12°C compared to the ambient temperature. At the same time, clothing stays perfectly dry. The effect can be repeated as many times as necessary, and the ultra lightweight garment fits comfortably beneath all BMW Motorrad summer-weight textile jackets.



- A cooling vest with HyperKewl functional fabric at the back and the front
- Constant cooling effect created through evaporation
- Outer material: nylon and polyester functional fibre
- Stretchy side sections
- Front zip
- Colour: Black
- Sizes: Unisex XS–XXL

New



1. Wet the vest with water.
2. Carefully squeeze out excess water.
3. Briefly let the jacket dry, then put it on.

PHASE CHANGE 2 FUNCTIONAL JACKET



- Phase Change Material (schoeller PCM™) actively equalizes temperature differences for maximum comfort
- Jacket sleeves are detachable
- Two side pockets with zips and mesh lining
- Colour: Black
- Sizes XS–XXXL

RIDE FLEECE JACKET, MEN’S

RIDE FLEECE JACKET, LADIES’

RIDE WINDBREAKER



New



New



- A functional fleece jacket with a high-quality double-face design
- Soft microfleece on outside: optimum heat retention
- High-performance polyester inner: breathable, temperature-regulating, moisture-wicking and quick-drying
- Windbreaker material with a windproof polyurethane membrane in chest area
- Slim cut for a perfect fit underneath motorcycle clothing
- Two side pockets with zips and mesh lining
- Ladies' colour: Light Grey
- Men's colour: Dark Grey
- Sizes (ladies): XS–XXL
- Sizes (men): S–XXXL



New



- 100% soft shell material
- Three-layer laminate with highly functional PU membrane
- Windproof, water-repellent and breathable
- Slim fitting
- Extra-long back section
- Ultra-light, folds down compactly
- Four zipped exterior pockets with mesh lining
- Opening for headphones (in right breast pocket)
- Also suitable for off-motorcycle leisure activities
- Colour: Black
- Sizes: XS–XXXL



MEN’S AND LADIES’
RIDE SHIRT



New



New



- Functional long-sleeved shirt made of 100% recycled polyester
- Breathable, moisture-wicking and odour-inhibiting thanks to Polygiene
- Mesh inserts at the sides for increased air permeability
- Comfortable to wear thanks to Cotton Touch
- Slightly fitted for ladies, straight cut for men
- Ladies' colour: Aqua/Neon Yellow, with Neon Yellow print on front right shoulder
- Men's colour: Petrol Blue/Neon Yellow
- Sizes (ladies): XS-XXL
- Sizes (men): S-XXXL

MEN’S AND LADIES’
RIDE T-SHIRT



New



New



- Functional T-shirt made of 100% recycled polyester
- Breathable, moisture-wicking and odour-inhibiting thanks to Polygiene
- Mesh inserts at the sides for increased air permeability
- Comfortable to wear thanks to Cotton Touch
- Slightly fitted for ladies, straight cut for men
- Ladies' colour: Coral/Dark Red, large print on back
- Men's colour: Petrol Blue/Neon Yellow
- Sizes (ladies): XS-XXL
- Sizes (men): S-XXXL



SHORT FUNCTIONAL UNDERWEAR



- 95% Meryl Skinlife polyamide, 5% elastane
- T-shirt and short trousers for summer
- Extremely pleasant and cool to wear, soft to the touch
- Breathable
- Antibacterial properties even after frequent washing
- Quick-drying
- Motorcycling fit
- Colour: Dark Blue
- Sizes: Unisex S–XXL



LONG FUNCTIONAL UNDERWEAR



- 95% Meryl Skinlife polyamide, 5% elastane
- Extremely pleasant and cool to wear, soft to the touch
- Breathable
- Antibacterial properties even after frequent washing
- ¾-length trousers
- Quick-drying
- Motorcycling fit
- Colour: Dark Blue
- Sizes: Unisex S–XXL



THERMAL FUNCTIONAL UNDERWEAR



- Functional material blend of 60% bio-active polyester, 34% Skinlife polyamide, 6% elastane
- Structural, warming sections at exposed points
- Comfortable to wear
- Breathable
- Antibacterial properties even after frequent washing
- Thumb loops at wrist
- Motorcycling fit
- Colour: Dark Blue/Black
- Sizes: Unisex S–XXL

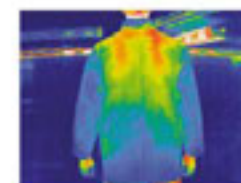
DoubleR SKIN UNDERSUIT



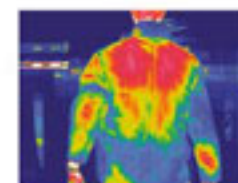
- One-piece undersuit to be worn under a leather suit
- Functional material blend of polyamide, polyester and elastane
- Highly breathable and temperature-regulating
- Antibacterial and odour-inhibiting
- Fully elastic, easy care and quick-drying
- Seamless, anatomically shaped knit for maximum comfort
- Foot loops and thumb loops for a perfect fit
- Colour: Black
- Sizes: S–XL



PCM FUNCTIONAL UNDERSUIT 2



With PCM



Without PCM

A satisfying riding experience starts with what covers your skin. Functional underwear from BMW Motorrad is made of comfortably soft, breathable material. The garments are anatomically fitted for motorcycling, so whether on long tours or hitting the race track, you can be sure of maximum comfort and unforgettable riding.

- Two-piece undersuit
- High collar, fleecy thermal Powerstretch
- Outer material is Powerstretch
- Phase change material (schoeller PCM) at chest, upper arms, kidneys, upper thighs and knees
- Breathable, temperature-regulating and quick-drying
- Suitable for use in temperatures from 5 to 15°C
- Phase change material becomes softer when worn
- Also suitable for skiing, jogging, hiking, etc.
- Colour: Black with contrasting Green stitching
- Sizes: S–XXL



PRO KIDNEY BELT



- Zip-in fleece element in kidney area
- Air mesh lining in kidney area, outer material made of Cordura
- Windproof and breathable
- Removable coccyx protector (DIN EN 1621, level 1)
- Strong stretch inserts at the side for an optimum fit
- Colour: Black
- Sizes: S–XL



KIDNEY BELT



- Practical, functional kidney belt for novice riders
- Air mesh lining with WINDSTOPPER, windproof and breathable
- Strong stretch inserts at the side for a good fit
- Velcro fastening for individual adjustment
- BMW Motorrad logotype on the back
- Colour: Black
- Sizes: S–XL



SILK STORM HOOD



- Lightweight storm hood for summer use
- 100% high-grade silk, temperature-regulating
- Flat stitching prevents chafing
- Colour: Black
- Sizes: M and L



SUMMER STORM HOOD



- Designed for use in summer and late spring/early autumn
- Ultra-fresh antimicrobial treatment
- No stitching
- Breathable and regulates body climate
- Colour: Black
- Sizes: M and L



HYDRO SOCK FUNCTIONAL SOCKS



- A waterproof functional stocking
- Ergonomically designed for enduro/off-road riding
- Three-layer laminate of bamboo fibre, polyester and elastane with a windproof and waterproof C.A.R.E. climate membrane
- Warm, odour-neutralizing and moisture-regulating
- Reinforced sole
- Colour: Dark Grey
- Sizes: 39/40–47/48



FUNCTIONAL SOCKS AND STOCKINGS



- Perfect fit thanks to elastic webbing at the front of the foot
- Knitted-in ventilation channels on the bottom of the foot
- Anatomically shaped padding reduces pressure at the shin, ankle and heel
- High level of comfort thanks to plush padding
- High wool content paired with high-performance fibres regulates temperature and wicks away moisture

- Stocking: 50% pure new wool, 22% polyacrylic, 20% polypropylene, 6% polyamide, 2% elastane
- Sock: 33% cotton, 33% pure new wool, 22% polypropylene, 10% polyamide, 2% elastane
- Functional stocking colours: Anthracite/Black/Blue
- Functional sock colours: Light Grey/Black/Mustard
- Sizes: 35–38, 39–41, 42–44, 45–47



NECK WARMER



- High-quality microfleece with windbreaker membrane (three-layer laminate)
- Effective protection against wind for neck and upper chest
- Works well in combination with storm hoods
- Also suitable for skiing, jogging, hiking, etc.
- Colour: Black with Blue lining
- Sizes: S–L



WINDBREAKER 2 STORM HOOD



- Suitable for low temperatures
- High-quality polyester fleece with windbreaker membrane (three-layer laminate)
- Powerstretch at top of head
- Excellent protection against wind for neck and upper chest
- Flat stitching
- Breathable and regulates body climate
- Colour: Black with Blue lining
- Sizes: S–L

BMW MOTORRAD EASY TUBE



- Soft elastic material, 100% polyester
- Can be worn in various ways (scarf, face protection, headband etc.)
- Colours: Red, Blue

ProRain 3 RAIN SUIT



- One-piece wet-weather suit
- 100% nylon stretch, laminated
- Easy to put on with long, diagonal front zip and long zips down sides of legs
- Waterproof outside pocket
- Packs down to small size
- Heat-resistant Nomex on inner leg
- Non-slip material at seat
- Large reflective prints
- Colour: Yellow
- Sizes: Unisex S-XXXL



- Two-piece wet-weather suit
- 2.5-layer laminate, 100% nylon
- Jacket with integrated hood
- Easy to put on with long leg zips
- Two waterproof front pockets
- Non-slip material at seat
- Packs down to small size
- Heat-resistant Nomex on inner leg
- Colour: Red/Grey
- Sizes: Unisex S-XXXL

RAINLOCK 2 RAIN SUIT



- Traditionally cut, two-piece wet-weather suit
- Elasticated, breathable three-layer laminate, 100% nylon
- Windproof, waterproof and breathable thanks to C.A.R.E. climate membrane
- Sealed seams
- Heat-resistant Nomex on inner leg
- Front zip with waterproof labyrinth design
- High, adjustable collar with storm hood
- Leg zip extends to waistband
- Jacket: two waterproof outside pockets and one waterproof inside pocket



- Velcro fastener on sleeve and leg cuffs and on the collar
- Pull cord on jacket seam and at waist
- Reflective Anthracite print
- Connecting zip (40 cm)
- Easily stored in pouch supplied
- Colour: Black
- Dimensions: S-XXXL

CLIMATE COMFORT 2 SUIT

THE POWER OF PROTECTORS.

PROTECTORS ARE A KEY COMPONENT OF THE BMW MOTORRAD APPROACH TO SAFETY. SVEN KIRSCHNING, RIDER EQUIPMENT PRODUCT MANAGER, TELLS US MORE.

What role do protectors play in Rider Equipment?

Kirschning: “Protectors are hugely important, and play a fundamental part in our approach to safety. We fit protectors in all of our jackets, trousers and suits as standard, something many of our competitors fail to do. Their principal purpose is to provide protection in the case of an impact, though the protectors also increase the wear-resistance of materials. In those rare cases where the fabric does give way, the protectors continue to fulfil their role, maximizing rider safety. Suits help prevent abrasion, but for a complete protective solution, protectors are essential.”

Why are protectors so important?

Kirschning: “They help protect riders from any impact should they come off their motorcycle. In the vast majority of cases, it is the elbows or the hips that first come into contact with ground, and protectors help absorb the force transferred. In addition, they protect against abrasion from sliding. Protectors are an essential part of safety equipment, and they reduce the effects of practically every type of accident. When developing our products, we work closely with doctors and medical professionals to establish exactly which areas require the greatest protection, and where we need to go beyond industry standards.”

What should riders look out for when making a purchase?

Kirschning: “The fit and ergonomics are the most important aspect to consider. It is essential that protectors do not distract or irritate riders, which is why our knee protectors, for example, can be set to various different heights. The material used should also be soft and comfortable when worn, so that there are no pressure points. There are hard-shell protectors on the market that do meet safety requirements, though these are unable to absorb energy as effectively. Generally speaking, it is important to remember that protectors alone can never prevent all types of injury, such as those caused when the cervical spine overstretches. That's why we also offer a neck brace, to be used with the back protector.”

What is special about BMW Motorrad protectors?

Kirschning: “Every one of our protectors is available in two different sizes, and we also adapt the fit according to whether they are to be worn on the left or the right of the body – that also applies to our elbow and shoulder protectors. In addition, our products offer far more protection than industry standards require, and they have won a wide range of awards in consumer tests.”

What new additions are there this season?

Kirschning: “We always keep a close eye on market developments, and have redesigned the second generation of our protectors – the NP2 protectors – so that they offer better ergonomics. They are now much lighter, and the material they are made of is softer and more comfortable to wear.”



CHOOSE YOUR OWN CRUMPLE ZONES.

NP PROTECTORS FROM BMW MOTORRAD.

BMW Motorrad has worked with specialists in biomechanics, medicine and accident research to develop a new and even safer generation of protectors. Despite being extremely soft, flexible and inconspicuous, they provide a level of protection that's second to none, absorbing the impact by moulding themselves to vulnerable parts of the body and also providing significantly better coverage of the joints, combining active safety with superior comfort.

WHAT MAKES A GOOD PROTECTOR?

The lower the residual force transmitted to the body, the more effective the protector is. In other words, a good protector should absorb as much as possible of the impact energy, and then release it gradually so the level of force to which the wearer is subjected does not spike. NP and NP2 protectors from BMW Motorrad do this up to 200% more effectively than competitor products.

THE CE STANDARD. A CONSISTENT BENCHMARK FOR EVERYONE.

The CE standard is a European norm that applies to all joint and back protectors. It represents a good balance between protection, comfort and ergonomic considerations. Most protectors on the market are designed to withstand the maximum forces specified in the CE standard. However, this often means that in the much more common case of impacts with lower kinetic energy, the force of the collision is transmitted in its entirety to the wearer. BMW Motorrad protectors comfortably outperform the requirements of the CE standard: the residual force that reaches the body is between 10 and 12 kN for joint protectors and between 4 and 6 kN for back protectors, the lowest figures of any system on the market. All protector products must by law be labelled with their size and the standard they comply with.

THE SLEEVELESS PROTECTOR JACKET FROM BMW MOTORRAD.

Back protectors must also indicate the degree of protection that they provide (performance level 1 or 2). The BMW Motorrad sleeveless protector jacket and NP2 back protector are among the few products on the market that fulfil the much stricter performance level 2 criteria. The main measurement used to determine the fit of a back protector is the distance from hip to shoulder, and this too should appear on the protector. For example, for a "large" back protector, this distance should be at least 55 centimetres. However, comfort is not just about getting the right size, it's also about adjustability and tightness of fit. And comfort is an important safety feature in itself – because it allows riders to concentrate on the road, which is particularly important in critical situations.

AND ANOTHER THING:

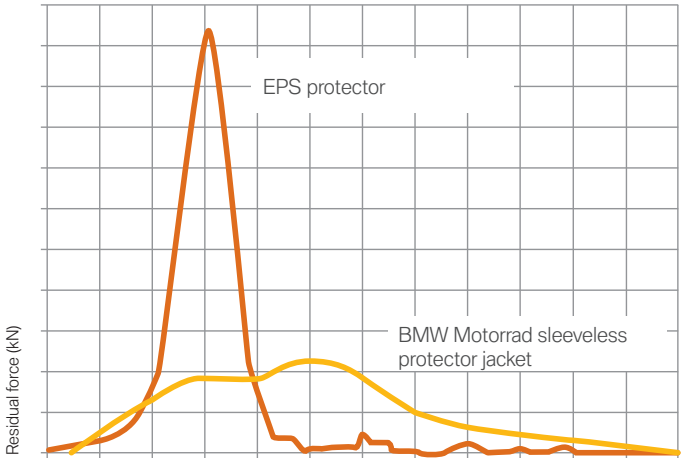
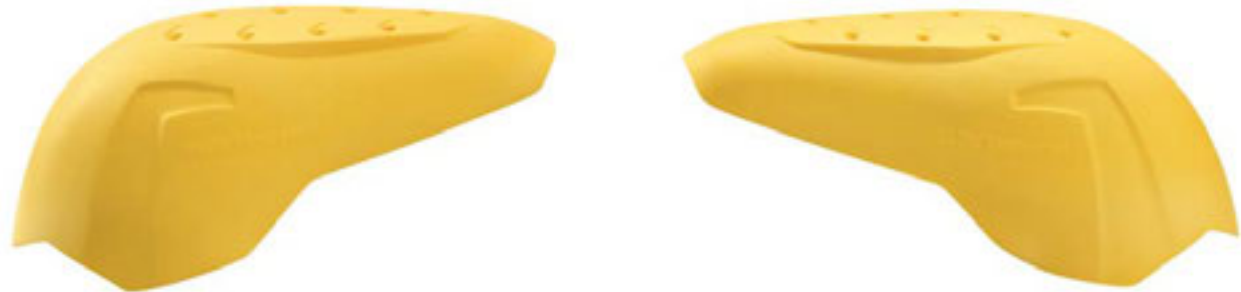
In addition to the back and collarbone, the new protector jacket from BMW Motorrad now also protects the rib cage, via a removable chest protector.

THE NECK BRACE SYSTEM.

Even the best motorcycling equipment leaves the top of the back and neck virtually unprotected. The Neck Brace System remedies this: developed by BMW Motorrad and KTM in conjunction with a team of experts in the fields of bio-mechanics, surgery and motorcycling accidents, the system minimizes the risk of damage around the neck, the cervical vertebrae and the collarbone. The Street Neck Brace System has been designed specially for on-road riders. It is thinner, but offers the same level of protection. As such, it allows for greater freedom of movement, and is a lot easier to get used to.

THE NEW NP2 PROTECTORS.

BMW Motorrad has further improved its tried-and-tested NP protectors. The new NP2 protectors feature a special viscoelastic foam, developed exclusively for BMW Motorrad. This shapes itself around the body for a perfect fit, improving comfort whatever the temperature. Despite their greater flexibility, NP2 protectors offer the exact same level of protection as their predecessors, and deliver exceptional impact absorption.



The new NP protectors spread the absorption of the impact over a longer period to avoid peaks in the residual force.



SLEEVELESS PROTECTOR JACKET

BACK PROTECTOR



New

- Body warmer with removable chest and back protector
- NP2 back protectors, certified to DIN 1621 (level 2)
- Flexible body warmer made of polyester and Lycra
- Provides generous protection for spinal column and shoulder, kidney and chest areas
- Very good air permeability and air circulation
- Colour: Black with blue-white print
- Sizes (unisex): S–XL

- NP2 back protectors with extremely good impact-absorption properties (level 2)
- Provides generous protection for spinal column, shoulders and kidney areas
- CE certified to DIN 1621, level 2
- Very good air permeability and air circulation
- Steplessly adjustable shoulder straps and kidney belt
- Colour: Black with blue-white print
- Sizes (unisex): S–XL



New



A major step forward in motorcycling safety, the BMW Motorrad Neck Brace System provides riders with highly effective protection against the risk of injury to the cervical spine. The new Street Neck Brace features a flatter design, for greater freedom of movement, and can be folded up for easy transportation and storage. At the same time, it offers a similarly high level of protection. All BMW Motorrad Neck Brace Systems can be easily worn over a motorcycle jacket.

Street Neck Brace System

- Protection for on-road riders
- Effectively reduces the risk of injuries to the cervical vertebrae
- CE certified
- Made of glass fibre, weight approx. 800 grams
- Considerable freedom of movement
- Left and right shoulder blade supports at the back, for greater comfort
- Folds up for easy storage and transportation
- Gap to allow closing of jacket zip
- Easy to adjust to size of wearer, sizes S/M, L/XL and XXL



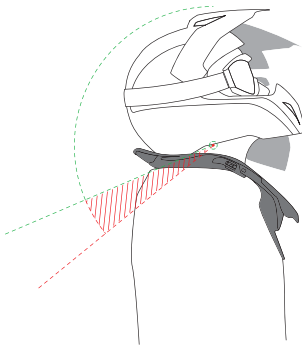
Function Neck Brace System



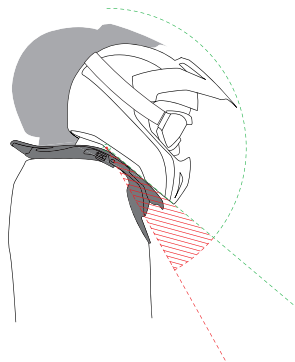
Carbon Neck Brace System

NECK BRACE SYSTEM

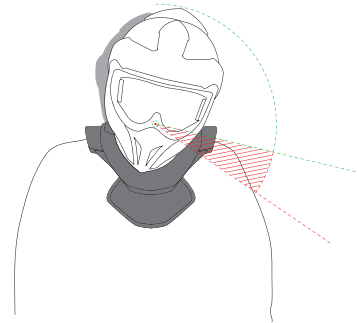
- Carbon Neck Brace System: Carbon/Kevlar laminate upper section, injection-moulded, glass-fibre reinforced plastic lower section, weighs no more than approx. 780 grams
- Function Neck Brace System: made entirely of injection-moulded, glass-fibre reinforced plastic
- Foam-padded with removable fabric slipcase
- Usable with all the common helmet models and motorcycling wear
- Size adjustable
- Does not restrict freedom of movement
- For racing, on-road and off-road riding, as well as use in everyday traffic
- Easy-to-use, quick-action snap buckles
- Colour: Anthracite/Carbon Sizes (unisex): S (children), M (adults)



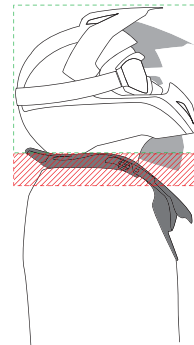
Hyperextension:
backwards bending of the neck beyond
its normal range of motion.



Hyperflexion:
forwards bending of the neck beyond
its normal range of motion.



Lateral hyperflexion:
sideways bending of the neck beyond
its normal range of motion.



Axial compression:
downward pressure on the neck due to
an impact on the helmet.

The worst can sometimes happen in sports riding or even in everyday riding, and in these circumstances the Neck Brace System is designed to control and prevent sudden movements of the head that could otherwise result in injury. The energy of an impact is effectively dissipated away from the neck to the upper body.

- The risk of overstretching the neck (hyperflexion, hyperextension, lateral hyperflexion) is significantly reduced.
- Injuries resulting from compression of the spinal column by the application of force to the helmet (axial loading) or rearward movement of the head on the upper cervical spine (posteral hyper-translation) can be prevented.

Danger zone

FUNCTION 3 RUCKSACK



- Capacity expandable from approx. 28 to 33 litres
- Upper: polyester, polyurethane, PVC
- Waterproof main compartment with laptop section (up to 15 inches)
- Can be expanded for one helmet
- Four outer pockets
- Ergonomically shaped back section
- Removable, adjustable padded shoulder strap with reflective material
- Length-adjustable chest and hip strap
- Detachable hip belt made of air-permeable mesh material with two small zipped pockets
- Carry handle
- Two pull straps on each side to compress rucksack
- Carrying strap can be conveniently tucked away; rucksack can be fastened to the motorbike as a luggage roll using the supplied straps
- Colour: Black/Anthracite

MESSENGER BAG



- Capacity approx. 12 litres
- Upper: polyester, polyurethane, PVC
- Highly water-repellent
- Large zipped main compartment
- Padded laptop and document compartment
- One zipped outer pocket on the front and back
- One zipped pocket and two smaller storage compartments in the cover
- Padded back
- Length-adjustable, padded shoulder strap
- Carry handle
- Adjustable and removable waist strap
- Colour: Black/Anthracite

SPORT SOFTBAG 2



SMALL SPORT SOFTBAG 2

- Capacity expandable from approx. 31 to approx. 36 litres
- Waterproof main compartment
- Shoulder strap, carry handle, storage pockets
- Made of hard-wearing, easy-care fabric
- Three outer pockets at sides
- One storage compartment in lid for small items
- Fastening straps included
- Colour: Black/Silver

LARGE SPORT SOFTBAG 2

- Capacity approx. 55 litres
- Waterproof main compartment
- Shoulder strap, carry handles, storage pockets
- Fastening straps included
- Made of hard-wearing, easy-care fabric
- Two outer pockets at sides
- One storage compartment accessible from outside
- One outer pocket with transparent window in flap
- Colour: Black/Silver



BMW MOTORRAD SUNGLASSES

TRIVISION FUNCTIONAL GLASSES

BRACES

TrinkPak HYDRA DRINKING-WATER RESERVOIR



BMW MOTORRAD
SUNGLASSES

- Slightly reflective lenses for a stylish look
- Close fitting, designed for motorcyclists to wear comfortably inside the helmet
- Scratchproof, tinted lenses for optimum protection even in strong sunlight
- Very lightweight
- Metal frame
- 100% UV-A, UV-B and UV-C protection
- With hardcase and softbag for storage



TRIVISION
FUNCTIONAL
GLASSES

- Functional glasses with sporty fit
- Replaceable and interchangeable lenses for any weather (tinted, orange and clear)
- Dark-tinted lenses offer 100% UV-A, UV-B and UV-C protection
- Can be worn in perfect comfort inside the helmet
- Supplied complete with softbag and sturdy spectacles case



BRACES

- Three different types of fasteners: loops, buttons, clips
- Large leather section at back
- Steplessly adjustable
- Colour: Black

TrinkPak HYDRA DRINKING-WATER
RESERVOIR

- Flexible drinking-water system
- Made of transparent, mould-resistant and odourless polyurethane
- Reservoir with large opening for easy filling and cleaning
- Plug and play connection from tube to reservoir – liquid does not flow until the tube has been connected (nothing wets the jacket during set-up)
- Lid pushes firmly closed; completely watertight even under severe conditions
- Angled mouthpiece with push-pull function for easy opening (also with the teeth)
- Soft easy-flow silicon bite-down cap at the end of the mouthpiece: when the mouthpiece is open, biting down lightly on the cap increases the flow of liquid
- Capacity: 2 litres



C.A.R.E. CONCEPT OF ADVANCED RIDER EQUIPMENT.

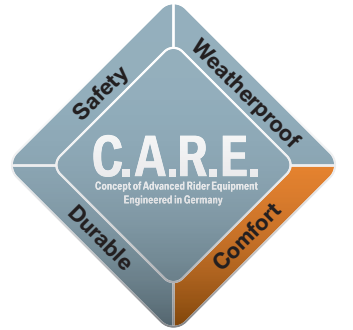


INDUSTRY SAFETY STANDARDS ARE HIGH, BUT OURS ARE HIGHER.

Safety is of course our number one priority with the BMW Motorrad Rider Equipment range. Only the finest-quality materials are used, such as Keprosshield or specially treated, tear-resistant leather, while we are constantly working to further develop existing technology and create wholly new fabrics. That way, we ensure each and every one of our products meets BMW Motorrad's exemplary safety standards – which are generally far more stringent than industry norms – and receives the C.A.R.E. stamp of approval.

LOOK GREAT, FEEL EVEN BETTER.

It's absolutely essential that motorcyclists aren't distracted by poorly fitting equipment, which is why all BMW Motorrad products are designed to offer the ultimate in comfort. The materials used are of the highest quality, being both tough and offering freedom of movement, and most of our gloves feature fingers that are curved forwards and specially stitched to minimize pressure on the hand. Similarly, the new NP protectors are soft and flexible yet deliver outstanding safety performance.



FANTASTIC RIDING, WHATEVER THE WEATHER.

Products bearing the C.A.R.E. stamp make weather worries a thing of the past. Intelligently designed down to the very last detail, they feature windproof zips, gaiters and waterproof seams. Special materials keep rain out, while allowing body heat and moisture to escape, and some of them even actively regulate body temperature. Together, they ensure the optimum riding conditions whatever the weather. Because a comfortable rider is a safer rider.

QUALITY THAT LASTS AND LASTS.

BMW Motorrad Rider Equipment is like a trusty riding companion that can be relied on for years. Over time, the products become almost as unique as the rider who wears them, with their exceptional durability a result of the quality of the materials and manufacturing processes employed. Every single fabric and fibre undergoes extensive testing in a range of realistic conditions, while each individual component is subjected to the most thorough practical and virtual testing and analysis imaginable.



AirTex

This resistant, net-like Dynafil structure allows air to flow freely, keeping you cool even at higher temperatures. It is extremely light, yet offers all the safety you'd expect from a motorcycling jacket, and is ideal for hot-weather riding.

Breathability

Technically defined as resistance to evaporating heat transfer (RET). The lower the RET, the more permeable the material is to air.

Azo dyes

These may not be used in coloured outer materials since they can break down into carcinogenic amines.

Carbon fibre

Heat-resistant chemical fibre, lighter than glass fibre. Characterized by high strength and rigidity.

C.A.R.E. Climate membrane

A functional membrane that meets C.A.R.E. standards and is breathable, waterproof and windproof.

c_change

The intelligent c_change membrane adapts the size of its pores according to the exterior temperature, thus allowing the skin to breathe in hot weather, and locking in heat on colder days.

CE test mark

The CE (Communauté Européenne) mark indicates that the product complies with European Union safety directives.

coldblack

Treatment for dark material that reflects the sunlight and protects against UV rays, keeping suits cooler for longer.

Cordura 500/700

Nylon yarn consisting of 100% polyamide. The manufacturing process involves respinning and weaving the cut polyamide fibres. Has a melting point of 210°C. Cordura 700 is even more tear resistant.

Expanding pleats

The upper material is sewn onto the stretch fabric in a corrugated form. This allows the compound to stretch, making the tear-resistant outer material even safer.

Design

The characteristics of BMW design include the use of classic shapes and colours. Our guiding principle is “Form follows function”.

DuPont Coolmax

DuPont Coolmax consists of hollow fibres which transport humidity to the outside very quickly by capillary action, making the material dry 50% faster than cotton.

Dynafil

A highly tear-resistant polyamide yarn that is even more robust than Cordura 500/700 and resistant to high temperatures.

Dynatec

Fabric made of Dynafil. Tear resistant and extremely robust, with a melting point of 290°C.

Glass-fibre reinforced plastic (GFRP)/ carbon-fibre reinforced plastic (CFRP)

The individual fibres (aramid, carbon, glass fibre) can be mixed in varying proportions as required. By changing the orientation and position of the fibres, different characteristics can be achieved – for example low weight, high strength, high rigidity, low heat expansion and good insulating properties.

Gore-TEX®

A membrane made of teflon (polytetrafluorethylene). Countless microscopic pores prevent the penetration of large water droplets while allowing the much smaller water vapour molecules to pass through. The branch-like structure of the membrane means that it is also windproof.

GORE-TEX® X-TRAFIT™

GORE-TEX® X-TRAFIT™ is a three-layer structure used in motorcycle gloves. It is windproof, waterproof and breathable, with the layers glued or laminated together. The lining is affixed to the membrane, and the membrane to the leather. The result is an excellent grip, while the gloves are easy to pull on and off at all times, even when wet.

Hydrophobic treatment

A treatment which renders leather water-resistant. BMW uses the vat immersion technique, with 3M Scotchguard as the active agent. The best hydrophobic results are obtained when only the leather fibres are encapsulated and the pores are left open, helping to maintain breathability.

HyperKewl system

The HyperKewl water management system absorbs and stores moisture, then gradually releases it via evaporation. This has a cooling effect that reduces heat by six to 12°C, compared to the ambient temperature. It means the body stays cooler, and is better able to perform in challenging conditions.

Integral helmet

A helmet that encloses the head completely.

Jet helmet

An open-face helmet with no chinguard or visor.

Kangaroo leather

Finer, more closely woven fibres and a tighter structure make this leather even more durable than cowhide.

Keproshield

Highly protective material made of Kevlar, Dynatec and cotton, bonded together with the c_change bionic membrane as a three-layer laminate, and treated with coldblack reflective technology.

Keptotec

A blend of Kevlar and PA fibres which enhances Kevlar's already excellent stretchability and abrasion resistance. Used to reinforce those areas most at risk in a fall, such as the elbows, shoulders, knees and thumbs.

Keratan

The unique Keratan treatment maximizes abrasion resistance, while at the same time increasing flexibility. This is achieved by finishing robust premium leather with an etched diamond structure and adding a synthetic coating.

Laminate

A layered structure of various materials created by thermal adhesion (the adhesive is usually applied in spots), and particularly suited for use with all-weather membranes. Can also take the form of a lining laminate or three-ply laminate, and does not always need to be thermally attached to the outer material.

Leather

Because all leathers are not equal, we only use the very best. We use only the finest leathers from cows reared in the EU for our jackets, boots and gloves, with a minimum thickness of at least 1.2 mm for our suits, and often much more. As a result, they offer exceptional abrasion resistance.

Motorcycle-specific cut

This cut takes account of the body's contours in the riding position. The tops of the sleeves are further forwards, the sleeves and legs are angled, and there are numerous other special design details.

Nappa leather

The upper surface of the hide. Smooth and slightly shiny, worked to a soft leather with a fine grain.

Nickel-free accessories

All BMW Motorrad buttons and zips are nickel-free to protect the skin.

Nomex

A heat-resistant material made of fire-retardant aramid fibres.

Nubuck leather

A highly breathable leather with a slightly roughened surface, resulting in a velvety feel.

Off-road helmet

A helmet with a chinguard and sunshield but no visor.

PCP/CP

Pentachlorophenol (PCP) is banned under the German prohibited chemicals order of 14 October 1993, though it may be used in concentrations of up to 5 mg/kg in leather processing.

PITTARDS

PITTARDS leather is extremely resistant to water and heavy sweat. It is particularly long lasting and high in quality, and retains its softness, grip and shape after drying.

ProFoam

A viscoelastic foam which hardens on impact, providing excellent shock absorption at all temperatures.

ProSafe

An integral polyurethane foam with an open-cell structure and a closed-cell outer skin that resists weathering and is used in protectors.

Schoeller PCM

Derived from space research, this material features special paraffin capsules that allow it to store heat when warm and release it when the temperature drops. This means it can minimize fluctuations in body temperature, keeping the rider comfortable.

The material is at its most effective between temperatures of five and 25°C.

Serafil

Highly tear-resistant safety yarn used in all BMW Motorrad motorcycle suits.

Safety, active and passive

Active safety measures are designed to prevent accidents, for example by using reflective material for good visibility. Passive safety features aim to minimize the effects of an accident, for instance by employing impact-resistant protectors and outer materials.

Silver function

A fabric treated with silver via an ionizing process that has a long-term antibacterial effect, minimizing odour and moderating body temperature. The material has anti-static properties and wicks moisture away particularly effectively.

Stormcuff

A sleeve inlay which forms a waterproof closure around the wrist.

TFL Cool System

Cool technology is used in dark leather and fabric garments. Thanks to a special manufacturing process, sunlight is reflected from the dark surface of the leather or fabric in the same way as from a light surface, making the outer material much less likely to overheat.

Z-liner

Here, the membrane is like a lining “suspended” between the outer material and the lining itself.

SIZE CHARTS.

LADIES	Size	Height	Chest	Waist	Hips	Outside leg	Inside leg
Normal	34	168	80–82	63–66	88–91	106	78
	36	168	83–86	67–70	92–95	106	78
	38	168	87–90	71–74	96–98	106	78
	40	168	91–94	75–78	99–101	106	78
	42	168	95–98	79–82	102–104	106	77.5
Long	44	168	99–102	83–86	105–107	106	77.5
	46	168	103–107	87–91	108–112	106	77.5
	72	176	83–86	67–70	92–95	111	82
	76	176	87–90	71–74	96–98	111	82
	80	176	91–94	75–78	99–101	111	82
Short	84	176	95–98	79–82	102–104	111	82
	88	176	99–102	83–86	105–107	111	82
	17	160	79-82	63-66	88-91	101	74
	18	160	83–86	67–70	92–95	101	74
	19	160	87–90	71–74	96–98	101	74
	20	160	91–94	75–78	99–101	101	74
	21	160	95–98	79–82	102–104	101	73.5
	22	160	99–102	83–86	105–107	101	73.5

MEN	Size	Height	Chest	Waist	Hips	Outside leg	Inside leg
Normal	46	170–172	90–94	80–83	97–100	98	78
	48	173–175	95–98	84–87	101–104	100.5	79
	50	176–178	99–102	88–91	105–108	103	80
	52	179–181	103–106	92–96	109–112	104.5	81
	54	181–183	107–110	97–102	113–116	106	82
	56	183–185	111–114	103–107	117–120	107.5	83
	58	185–187	115–118	108–111	121–124	109	84
	60	187–188	119–122	112–117	125–128	110.5	85
	62	189–190	123–126	118–122	129–132	112	86
	64	191–192	126–130	123–126	133–136	113.5	87
Slim	66	193–194	131–134	127–130	137–140	115	88
	98	182–184	95–98	84–87	105–108	110	86
	102	185–187	99–102	88–91	109–112	111.5	87
	106	188–189	103–106	92–96	113–116	113	88
	110	190–191	107–110	97–102	117–120	114.5	89
Intermediate sizes	114	192–193	111–114	103–107	121–124	116	90
	118	194–195	115–118	108–111	125–128	117.5	91
	24	168–170	95–98	89–92	105–108	98	76
	25	170–172	99–102	93–96	109–112	98	76
	26	173–174	103–106	97–102	113–116	99.5	77
	27	175–176	107–110	103–107	117–120	101	78
	28	177–178	111–114	108–111	121–124	102.5	79
	29	179–180	115–118	112–117	125–128	104	80
	30	181–182	119–122	118–122	129–132	105.5	81
	32	183–186	126–130	127–130	137–140	108.5	83

UNISEX	Size	Chest	Standard size	
			Women	Men
	XS	80–86	34/36	
	S	87–90	38	44
	M	91–98	40	46/48
	L	99–104	42/44	50/52
	XL	105–111	46/48	52/54
	XXL	112–119	50	56/58
	XXXL	120–126	52/54	60/62
BACK PROTECTOR	Size	Torso length	Height	
	S	Up to 45.5	Up to 173	
	M	45.5–47.5	173–181	
	L	47.5–49.5	181–188	
	XL	49.5–51.5	188–196*	

As the ratio of torso length to overall height can vary greatly from person to person, and the build of the individual also significantly affects fit, this table should be considered as providing guidance only.

* With heavier build

The figures shown in this table are the body measurements used as the basis for sizing products in the current BMW Motorrad Rider Equipment range. The table should help customers to choose the appropriate size.

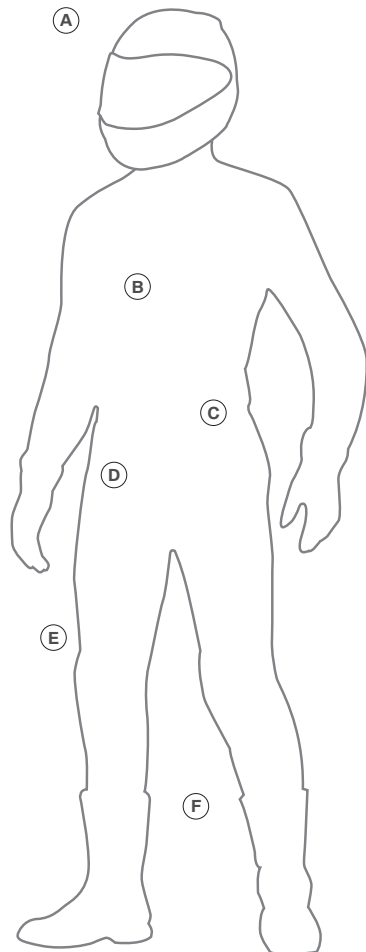
SEE HOW YOU MEASURE UP

It's essential that a motorcycling suit should fit properly. If it's uncomfortably tight, it can affect concentration while riding, and the same goes if it's flapping loose.

Either way, it's an irritation that will take your mind off the road, and so compromise your safety. Jackets and trousers also have to sit right on the wearer. Sleeves and trouser legs should never ride up, because if they do, it's not just a safety issue – it also means you're not properly protected against the elements.

That's why the cut of all BMW Motorrad suits is specially designed for motorcycling use, and why they all feature a wealth of adjustments, expandable sections and clever details.

However, the most important factor in ensuring a glove-like fit is still making sure that you get the right size. BMW Motorrad knows that riders come in all different body shapes, and so its suits are available in a choice of over 40 different sizes. To find the one that's right for you, grab your tape measure and follow these simple instructions.



A Height

Stand barefoot with your back to a door frame. Place a book on your head and use it to make a mark on the door frame. Measure the height from the floor to this mark.

B Chest

Take this measurement while wearing a shirt or lightweight pullover. Pass the tape measure under your arms, and take the measurement around the broadest part of the chest and over the shoulder blades.

C Waist

Measure around the shirt, just above the top of your trousers. Ensure you are in a relaxed and natural position, and do not hold in your stomach – that way you'll ensure the trousers sit comfortably.

D Hips

Measure the distance around the body over the hips and the fullest part of the backside.

E Outside leg

Measure the distance down the outside of your leg, from the waist of your trousers to the sole of your foot.

F Inside leg

Measure the distance down the inside of your leg, from the crotch seam to the sole of your foot.

SYMBOLS



c_change



GORE-TEX®



GORE-TEX® Armacor

A material with excellent tensile strength and abrasion resistance, capable of withstanding extreme temperatures thanks to the combination of Kevlar and Cordura.



Cordura



Dynatec



Keprosshield



AirTex



WINDSTOPPER Laminat

Offers a high level of freedom of movement, and excellent protection against wind and rain.



3M Thinsulate

A thin layer of this lightweight material is enough to provide excellent thermal insulation.



coldblack/TFL Cool technology



Reflective material



NanoSphere

A treatment to prevent the build-up of dirt and improve washability.



Leather



Kangaroo leather



Stingray leather



Hydrophobic treatment



Sun

Warm weather.



Cold

Cold weather.



Windproof



Waterproof



Waterproof pocket



Special ladies' cut



Removable protectors



Retrofittable protectors



Carbon fibre



Fit

Helmet shell in a range of sizes.



Ventilation



Double-D fastener



Extremely light weight



Double-glazed visor



Neck strap



C.A.R.E. Climate membrane

BMW Motorrad



bmw-motorrad.com/
ride

The Ultimate
Riding Machine



bmw-motorrad.com

Subject to change in design and equipment. Subject to error. © BMW Motorrad, UX-VB-1, Munich, Germany. Not to be reproduced, wholly or in part, without the written permission of BMW AG, Munich. Printed on 100% chlorine-free bleached paper. Printed in Germany 12/2012.

3 11 999 024 **20** 1 2013