



The Ultimate  
Driving Machine



# THE 2

GRAN COUPÉ PRICE LIST  
LAUNCHING MARCH 2020



CONTENTS.

Page 1	Contents
Page 2	The new BMW 2 Series Gran Coupé Introduction
Page 3	Exterior Equipment Highlights
Page 4	Interior Equipment Highlights
Page 5	Model Range – M235i xDrive Highlights
Page 7	Model Range – M Sport Highlights
Page 8	Model Range – Sport Highlights
Page 9	Package Highlights
Page 13	Technical Information
Page 14	Pricing Information
Page 15	BMW ConnectedDrive
Page 17	BMW EfficientDynamics / Paintwork / Upholstery / Interior Trims / Transmissions
Page 18	Steering and Chassis / Exterior Equipment / Interior Equipment
Page 19	Packages
Page 20	Safety and Technology
Page 21	Audio and Communication
Page 22	Light Alloy Wheels
Page 23	BMW Pay Monthly Servicing & Trackstar
Page 25	Code Glossary
Page 26	BMW ConnectedDrive Services

[www.bmw.co.uk/2SeriesGranCoupe](http://www.bmw.co.uk/2SeriesGranCoupe)



Personalise and buy your perfect BMW online. Find out more at [www.bmw.co.uk/online-sales](http://www.bmw.co.uk/online-sales)

THE NEW BMW 2 SERIES GRAN COUPÉ.

Express your true extrovert – the first BMW 2 Series Gran Coupé.

Entering into a strong line of BMW heritage, the breathtaking exterior features, such as the frameless doors and stretched silhouette, present a truly premium appeal that raises expectations. Further strengthened by outstanding driving dynamics, the first BMW 2 Series M235i xDrive Gran Coupé increases the heart rate by delivering 306hp and 450Nm of torque, taking the car from 0 to 62mph in just 4.9 seconds.

From the inside, Illuminated interior trims coupled with perforated Dakota leather upholstery set a fine and fresh finish throughout, perfectly highlighting the enhanced driver-orientated cabin. Including a host of optional driving assistance systems and technology that keeps you more connected than ever before, the new BMW 2 Series Gran Coupé is the pinnacle of progression.

BMW EFFICIENT DYNAMICS.

EfficientDynamics is BMW’s award-winning programme of technologies designed to reduce CO<sub>2</sub> emissions and improve fuel economy, without compromising on performance or driving dynamics. These technologies are standard on every new BMW and could lower your fuel and tax costs, as well as ensure a lower benefit in kind tax rating for company car drivers. You can find out more about the benefits of BMW EfficientDynamics, as well as compare your own vehicle against any BMW 2 Series model at:

<https://discover.bmw.co.uk/technology/efficientdynamics>



Brake Energy  
Regeneration



ECO PRO  
Mode



Electric  
Power  
Steering



BMW  
EfficientLightweight



Tyres with reduced  
rolling resistance



High-precision  
direct injection

**BMW EFFICIENT DYNAMICS.**  
**LESS EMISSIONS. MORE DRIVING PLEASURE.**





## EXTERIOR.

Even from a glance, it is clear that the new BMW 2 Series Gran Coupé embodies a bold and thrilling attitude designed for people who feel the same way about life. From the extroverted appearance of the mesh effect Kidney grille on the M235i xDrive, to the free-form exhaust tailpipes, the new BMW 2 Series Gran Coupé signifies purely challenging performance that sets its own rules.

Breathtaking driving dynamics, combined with a powerful exterior design, are placed at the forefront of the new BMW 2 Series Gran Coupé. Emphasising its new-found authority, the M rear spoiler, available as part of optional M Sport Plus pack, coupled by the flat tail lights underline the dynamic appearance of the rear. This is perfectly complemented by the M Sport suspension system, standard for M Sport and M235i xDrive models, which offers a stiffer spring and damper setup while also lowering the vehicle by 10mm. This creates an even more direct suspension setup for sporty driving.

From the front, the striking LED headlights, showcase the impressive one-piece Kidney grille to create an agile impression on the road. In combination with optional Extended lighting, standard for M Sport and M235i xDrive models, the new BMW 2 Series Gran Coupé offers convenient exterior lighting solutions that welcome you back to the vehicle time and time again. For example, the exterior mirror lighting with BMW logo projection produces a stylish and assertive look, perfectly typifying the outgoing nature of the new BMW 2 Series Gran Coupé.



## INTERIOR.

An interior perfect for an expressionist. From the switchable colours of the optional Ambient lighting, to the illuminated interior trims, the new BMW 2 Series Gran Coupé presents an attractive, modern ambience that keeps the senses tingling.

Functionality also meets technology in the new BMW 2 Series Gran Coupé. Thanks to its generous spaciousness for the front and rear, as well as its four-door design, functional space is created to suit your needs. As standard, a range of innovative and convenient storage options are available with Extended storage, ensuring that you have full functionality throughout the interior.

And thanks to the BMW Live Cockpit Professional, optional for Sport models, the perfect companion is there to support you in any situation. The BMW Intelligent Personal Assistant is the soul of your BMW; it learns your behaviours to support you across a range of driving situations. By simply saying the activation phrase "Hey BMW", it will be ready to help you. Your smart interior is also at your fingertips. Intelligent Functionalities works in conjunction with BMW Intelligent Personal Assistant to offer you a personalised experience within the vehicle. With ease, you can define preferences, such as temperature, and the system will automatically adjust seat heating or air conditioning to suit your requirements. A truly progressive interior in the new BMW 2 Series Gran Coupé.





# MODEL RANGE.

The new BMW 2 Series Gran Coupé is available in a variety of engine and model variants, each providing a different level of standard specification. Below highlights some of the equipment differences between them. For further details, please contact your local BMW Retailer.



## M235i xDRIVE HIGHLIGHTS In addition / replacement to M Sport models

- 18" M light alloy Double-spoke style 556 M wheels, Bicolour Cerium Grey Matt
- BMW TwinPower twin-scroll Turbo four-cylinder petrol engine
- Door sill finishers with M235i designation, front
- Dual exhaust tailpipe, free-form in Cerium Grey, left and right split
- Eight-speed Sport automatic transmission with electronic selector-lever
- Kidney grille in Cerium Grey with mesh design
- M aerodynamic bodystyling, including:
  - Front bumper with M235i xDrive exclusive air inlet clasps finished in Cerium Grey (left / right)
  - Rear bumper with independent design in body colour with exclusive Black High-gloss diffuser with mesh design
- M logo designation, side – Cerium Grey
- M rear spoiler
- M Sport seats, front
- M seat belts
- M Sport braking system
- M Sport steering with M235i xDrive – specific settings
- M Sport suspension with M235i xDrive – specific settings
- Mirror caps, Cerium Grey
- Trigon cloth / Alcantara Anthracite upholstery
- xDrive intelligent all-wheel drive with M235i – specific reinforced components



2 SERIES GRAN COUPÉ      RRP from £35,820 inc. VAT

The new BMW 2 Series Gran Coupé M235i xDrive model is shown above in Snapper Rocks metallic paint. The models shown on these pages may feature optional equipment. Standard equipment may also vary depending on engine variant. Please contact your local BMW Retailer for further details.



# MODEL RANGE.

## M SPORT HIGHLIGHTS In addition / replacement to Sport models

- 18" M light alloy Double-spoke style 819 M wheels, Bicolour
- BMW Live Cockpit Professional, comprising:
  - 10.25" Control Display with Touch Function
  - BMW Intelligent Personal Assistant
  - BMW Operating System 7.0
  - Remote Software Upgrade
- Connected Package Professional
- Dakota leather upholstery with perforation and contrast stitching
- Door sill finishers with M designation, front
- Extended lighting
- Exterior mirrors – electrically folding with anti-dazzle
- Gearshift lever with M designation, short-shift (manual transmission only)
- Headlining, Anthracite
- Interior trim, Illuminated Boston
- Kidney grille, Chrome frame with Satin Aluminium struts
- M Sport aerodynamic bodystyling including:
  - Front bumper with independent design in body colour
  - Rear bumper with independent design in body colour with Dark Shadow insert
  - Side sill covers with independent design in body colour with Dark Shadow insert
- M logo designation, side – Chrome
- M Sport multi-function leather steering wheel with three-spoke design
- M Sport steering
- M Sport suspension
- Remote control with integrated key, including High-gloss Black inlay and M designation
- Seat heating, front



2 SERIES GRAN COUPÉ	RRP from £27,240 inc. VAT	+ £2,500 over Sport
---------------------	---------------------------	---------------------

The new BMW 2 Series Gran Coupé M Sport model is shown above in Misano Blue metallic paint.

## SPORT HIGHLIGHTS

- 17" light alloy Double-spoke style 549 wheels, Bicolour
- Active Guard Plus
- Air conditioning, automatic with two-zone control
- Bluetooth hands-free facility with USB audio interface
- BMW Live Cockpit Plus, comprising:
  - 8.8" Control Display with Touch Function
  - BMW iDrive 6 system (ID6)
  - iDrive controller with Touch Function
- Cloth Nivala / Sensatec upholstery with Orange or Grey highlight
- Connected Package Plus
- Cruise control with braking function
- Drive Performance Control with ECO PRO and Comfort modes
- Eight-speed Sport automatic transmission with electronic selector lever (220d only)
- Exclusive Sport exterior features, comprising:
  - Front bumper in body colour with air inlets finished in High-gloss Black
  - Rear bumper in body colour with design elements finished in High-gloss Black
- Exterior trim, High-gloss Shadowline
- Interior trim, Illuminated Berlin
- Larger fuel tank (220d only)
- LED foglights, front
- LED headlights
- Park Distance Control (PDC), front and rear
- Rain sensor, with automatic headlight activation
- Rear-view mirror, automatically dimming
- Six-speed manual transmission (218i only)
- Sport multi-function leather steering wheel, three-spoke
- Sport seats, front
- Welcome light



2 SERIES GRAN COUPÉ	RRP from £24,740 inc. VAT
---------------------	---------------------------

The new BMW 2 Series Gran Coupé Sport model is shown above in Melbourne Red metallic paint.



## PACKAGE HIGHLIGHTS.

BMW packages in the new BMW 2 Series Gran Coupé are designed to create greater convenience, functionality, desire and comfort on any drive. With options ranging from a selection of visually enhancing alloy wheels to the comfort of keyless access, this generous selection of combinations will enhance any journey in your new BMW 2 Series Gran Coupé.



### TECH PACK.

£1,500

Offering the latest innovations, the Tech pack is the perfect companion on any journey. From the ability to charge your phone wirelessly, to the convenience of relevant driving information projected onto the windscreen, this package enhances your driving experience.



All light functions in the **BMW Adaptive LED Headlights** use LED technology to aid you in a range of driving conditions. This feature also works with **High-beam Assistant** which automatically adjusts the high-beam headlights in response to the traffic situation whilst driving in the dark.



**Park Assist** makes parking easier with Parking Assistant, Reversing Assistant, Lateral Parking Aid and **Reversing Assist camera**. The Parking Assistant facilitates parking into parallel parking spaces as well as leaving parking spaces parallel to the road.



The **Head-up Display** projects information relevant to the journey into the driver's field of vision. The system can display navigation information, speed, warning information, if driver assistance systems are selected, and much more.



**Enhanced Bluetooth with wireless charging** provides a wireless connection of the telephone with the vehicle. **WiFi hotspot** preparation enables connection of mobile devices to the internet via the SIM card installed in the vehicle.

### COMFORT PACK I.

£600

The Comfort pack I, exclusively available for Sport models, combines convenient and innovative functionality with pure comfort. It offers welcoming light solutions, like the Extended lighting option, which can be utilised for even greater convenience in the new BMW 2 Series Gran Coupé.



**Extended lighting** features numerous LED lights, both inside and outside, for increased convenience and a stylish look.



The **Exterior mirrors** feature an **automatic anti-dazzle function** using built-in sensors. Additionally, the passenger-side exterior mirror features an automatic parking function. Both exterior mirrors are equipped with an electric folding function.



The **Seat heating for driver and front passenger** allows for heating of the entire seat base and backrest.

### COMFORT PACK II.

£1,100

Thanks to Comfort pack II, you now have greater ease of access and driving comfort both inside and outside of the vehicle. Sport models require Comfort pack I to enjoy the full functionality of this pack.



The **Steering wheel heating** quickly warms up the rim of the steering wheel at the push of a button, which is especially comfortable in winter.



The **Electric seat adjustment with driver memory** makes it particularly convenient and easy to adjust the driver and front passenger seats.



The **Comfort Access** system makes it possible to open all of the vehicle doors and the luggage compartment, without using the key. You can use the BMW Digital Key on a compatible smartphone or the NFC key card for accessing and starting the vehicle.



PACKAGE HIGHLIGHTS.



M235i PLUS PACK. £1,500

Enhance your new BMW 2 Series Gran Coupé M235i xDrive with the M235i Plus pack. This package enhances the vehicle through a selection of visual and performance upgrades to deliver the ultimate BMW experience.



Shown above on the left, **19" M light alloy V-spoke style 557 M wheels, Bicolour Cerium Grey Matt** lend a particularly sporty appearance to the M235i xDrive. Alternatively, **19" M Double-spoke style 552 M in Bicolour Jet Black**, shown on the right, can be chosen instead.



The **harman/kardon loudspeaker** has a 464W digital amplifier, nine channels, vehicle-specific equaliser and 16 speakers.



The dark-tinted **Sun protection glass** for the rear side windows and rear windscreen prevents the interior from heating up when exposed to direct sunlight.

M SPORT PLUS PACK. £2,200

Enhance your new BMW 2 Series Gran Coupé M Sport with the M Sport Plus pack. With this pack, you receive a generous selection of visual and performance upgrades to deliver the ultimate BMW experience.



The dark-tinted **Sun protection glass** for the rear side windows and rear windscreen prevents the interior from heating up when exposed to direct sunlight.



**18" M light alloy V-spoke style 554 M wheels, Orbit Grey.** Also shown is the **M Sport braking system** which is distinguished by exclusive Blue brake calipers and features the M logo on the front axle calipers.



The **M seat belts** in Black are finished with a coloured M seam and fitted to all five seats.



The **harman/kardon loudspeaker system** has a 464W digital amplifier, nine channels, vehicle-specific equaliser and 16 speakers.



The **M rear spoiler** emphasises the vehicle's athletic silhouette and reduces unwanted lift. By producing downforce on the rear axle, it provides the vehicle with greater driving stability.



The **Extended Shadowline exterior trim** contents consist of Kidney frame and struts in High-gloss Black and tailpipe finishers in Black Chrome.



THE NEW 2 SERIES GRAN COUPÉ.

TECHNICAL INFORMATION.

Model	Power output (hp)	0-62mph (secs)	Fuel consumption – combined (mpg / l/100km)*	CO <sub>2</sub> emissions – combined (g/km)*	
PETROL			Wheel cluster 1+		Wheel cluster 2+
218i Sport	140	8.7 (8.7)	47.1-45.6 (45.6-43.5) / 6.0-6.2 (6.2-6.5)	123 (114)	-
218i M Sport	140	8.7 (8.7)	46.3-43.5 (44.8-42.2) / 6.1-6.5 (6.3-6.7)	123 (114)	125 (117)
M235i xDrive	306	(4.9)	(37.2-36.2) / (7.6-7.8)	(153)	(156)
DIESEL					
220d Sport	190	(7.5)	(56.5-54.3) / (5.0-5.2)	(110)	-
220d M Sport	190	(7.5)	(56.5-53.3) / (5.0-5.3)	(110)	(113)

PRICES AND SPECIFICATIONS

BMW (UK) Limited reserves the right to alter prices and specifications without notice. BMW (UK) Limited has made every effort to ensure the accuracy of information but does not accept liability for any errors or omissions.

Key  
- = Not available      \* = Figures are for comparison purposes and may not reflect real life driving results which depend on a number of factors including the accessories fitted (post registration), variations in weather, driving styles and vehicle load. All figures were determined according to a new test (WLTP). The CO<sub>2</sub> figures were translated back to the outgoing test (NEDC) and will be used to calculate vehicle tax on first registration. Only compare fuel consumption and CO<sub>2</sub> figures with other cars tested to the same technical procedure.      Figures in () apply to cars with automatic transmission.      + = Wheel cluster 1 consists of the following 17" wheels: 1UP, 26M and the following 18" wheels: 1L2, 1RL, 1RN, 1Y2.      Wheel cluster 2 consists of the following 19" wheels: 1RR, 1Y3.

PRICING INFORMATION.

Model	Basic price (excluding VAT)	VAT 20%	RRP (including VAT)	On the road price	P11d value		BIK tax rate (2019 / 2020) <sup>1</sup>	VED band <sup>1</sup>	Insurance group
PETROL					Manual	Automatic			
218i Sport	£20,616.67	£4,123.33	£24,740	£25,815	£25,590	£26,940	28% (26%)	G (G)	TBC
218i M Sport	£22,700.00	£4,540.00	£27,240	£28,315	£28,090	£29,440	28% (26%)	G (G)	TBC
M235i xDrive	£29,850.00	£5,970.00	£35,820	£37,255	-	£36,670	(34%)	(I)	TBC
DIESEL									
220d Sport	£25,233.33	£5,046.67	£30,280	£31,355	-	£31,130	(30%)	(F)	TBC
220d M Sport	£27,316.67	£5,463.33	£32,780	£33,855	-	£33,630	(30%)	(F)	TBC

VED RATES

Annual VED (second year onwards) is £450 for cars costing over £40,000 and is payable for five years. VED rates for brand new cars are determined by their CO<sub>2</sub> emissions figure. First year VED applies to the first year of ownership. Annual VED rates apply thereafter. The new BMW 2 Series Gran Coupé models fall into one of the categories listed below:

CO <sub>2</sub> emissions (g/km)	Band F 101-110	Band G 111-130	Band I 151-170
First year VED (petrol)	-	£170	£530
First year VED (diesel)	£170	-	-
Annual VED (second year onwards)	£140	£140	£140

ON THE ROAD PRICE

The recommended on the road price includes:  
Delivery and BMW Emergency Service £825  
Number plates £25  
Vehicle first registration fee £55  
First year Vehicle Excise Duty See left

Key  
<sup>1</sup> = BIK tax rate and VED band dependent on chosen optional equipment.      Figures in () apply to cars with automatic transmission.      Insurance group figures refer to 50 Group Rating System.



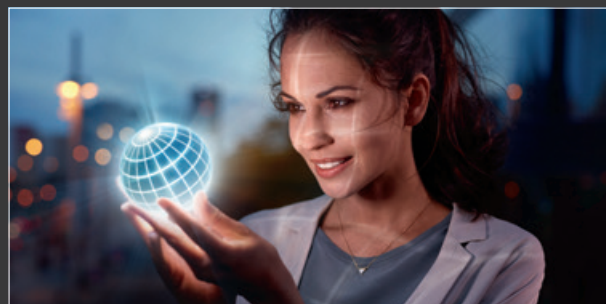
# The BMW Connected App. Your personal mobility assistant.



The BMW Connected App learns your mobility routines, reads your calendar and knows when you need to leave, providing you with a personal experience that is integrated into your everyday life. The App allows you to fully unleash the capabilities of BMW's innovative technologies intuitively through your smartphone.

## AVAILABLE ON THE NEW BMW 2 SERIES GRAN COUPÉ.

Thanks to BMW ConnectedDrive, you are now more connected than ever before. Providing cutting edge innovations as standard, the new BMW 2 Series Gran Coupé comes with a host of connectivity features that enhance and perfectly accompany any journey. The range of services can be seen below:



● **BMW Apps** makes it possible to operate smartphone apps, such as BMW Connected and web radio via the iDrive Controller and Control Display.<sup>1</sup>

● **BMW Connected+** provides the benefit of personalised services at all times.<sup>1,2</sup>

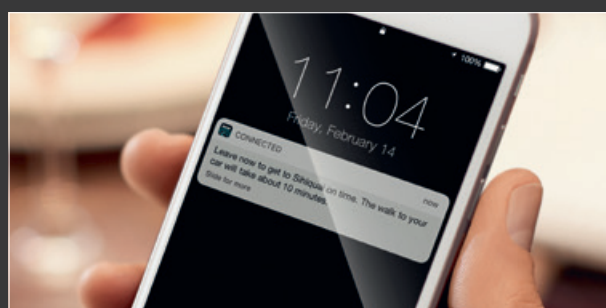
● **BMW Emergency Call** automatically creates a direct link to the local emergency services and sends details of your vehicle location and severity of the accident.<sup>3</sup>

● **BMW Online Services** provides the seamless integration of personalised BMW Connected mobility-related services.

● **BMW TeleServices** sends vehicle-specific service data, supports the processing of servicing appointments. It can also help you request help in the event of a breakdown.<sup>3</sup>

● **Intelligent Voice Control** understands natural speech as well as linguistic varieties and dialects thanks to off-board voice processing.<sup>1</sup>

● **Map Updates** automatically updates the maps in your BMW by downloading Over-the-Air via the on-board sim card or uploaded from a USB.<sup>1</sup>



## ○ BMW LIVE COCKPIT PROFESSIONAL.

Additionally, M Sport and M235i xDrive models receive the following as standard:



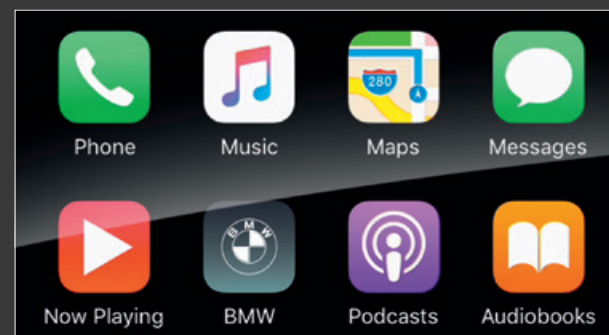
○ The **Intelligent Personal Assistant** is a revolutionary way to interact with your BMW and even has the ability to learn driver preferences. Intuitive operation options can be activated through voice command by saying "Hey BMW".<sup>1,4</sup>

○ **Intelligent Functionalities** creates customised rules and learns the driver's habits to enable greater comfort on every journey.<sup>1,4</sup>

Key  
● = Standard ○ = Optional The information above is subject to change. Actual Control Display and content on the BMW 2 Series Gran Coupé may vary from the images shown.  
<sup>1</sup> = Available and active for three years. Can be extended or renewed thereafter at an extra cost. <sup>2</sup> = BMW Connected+ is currently only available on Sport models equipped with 6U2. Not available for M Sport and M135i xDrive models. <sup>3</sup> = Available and active without runtime limitations. Usage cannot be guaranteed permanently due to potential future technical developments (of the Service availability and/or Smartphone compatibility/operating systems). <sup>4</sup> = Full functionality dependent on optional equipment selected. <sup>5</sup> = Available and active for three months. Can be extended or renewed thereafter at an extra cost.

BMW ConnectedDrive.  
More connected than ever before.

## ● CONNECTED PACKAGE PLUS.



● **Apple CarPlay® preparation** enables wireless usage of your iPhone® in your vehicle via Apple CarPlay® and is operated via the vehicle's user interface.<sup>3</sup>

● **Concierge Services** connects the driver to a BMW Call Centre agent who is available as their around-the-clock personal assistant.<sup>1</sup>



● **Remote Services** allows you to remain connected to your vehicle wherever you are, send destinations, find your vehicle as well as locking and unlocking your doors.<sup>1</sup>

● **Real Time Traffic Information** supplies details about the location and duration of delays, also includes Hazard Preview.<sup>1</sup>

## ○ CONNECTED PACKAGE PROFESSIONAL.

In addition to Connected Package Plus, M Sport and M235i xDrive models receive the following as standard:

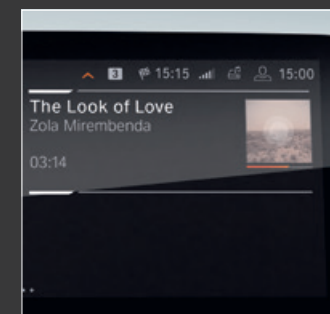


○ **Connected Navigation** makes route planning easier, anticipates road conditions and provides estimated time of arrival, plus multiple map views with split screen options.<sup>1</sup>

○ And thanks to **In-Car Experiences**, your BMW will take care of you and adapt the interior ambience to suit your mood.<sup>4</sup>



○ **Connected Parking** offers multi-storey and on-street parking information in selected cities throughout the UK and other selected cities in Europe.



○ Thanks to **Connected Music**, you can experience unlimited streaming of millions of songs from BMW's music partners Spotify, Deezer or Napster via the SIM card in the vehicle.<sup>1</sup>

## ● CONNECTED TEASER.


Available with Connected Package Professional and offers a three month trial of the following services:



**BMW Music**, powered by Napster, brings your favourite music to your BMW. Get access to millions of songs and thousands of audio books with a single click.<sup>5</sup>



STANDARD AND OPTIONAL EQUIPMENT.

	218i Sport	218i M Sport	M235i xDrive	220d Sport	220d M Sport	Price
---	------------	--------------	--------------	------------	--------------	-------

BMW EFFICIENT DYNAMICS

Active Air Stream Kidney Grille	●	●	●	●	●	Std
ECO PRO mode	●	●	●	●	●	Std
Electric Power Steering (EPS) with Servotronic	●	●	●	●	●	Std
High-precision direct injection	●	●	●	-	-	Std
Certain BMW EfficientDynamics features may be excluded depending on the optional equipment chosen. For full details please contact your local BMW Retailer.						

PAINTWORK

Non-metallic Available in Alpine White or Jet Black <sup>1</sup>	uni	●	●	●	●	●	Std
Metallic Available in Black Sapphire, Melbourne Red, Mineral Grey, Mineral White <sup>1</sup> , Misano Blue <sup>2</sup> , Seaside Blue <sup>1</sup> or Snapper Rocks <sup>2</sup>	met	○	○	○	○	○	£560
BMW Individual Available in Storm Bay metallic	ind	-	○	○	-	○	£560

UPHOLSTERY

Nivala cloth / Sensatec Available in Anthracite with Grey highlight or Anthracite with Orange highlight	KF	●	-	-	●	-	Std
Dakota leather with perforations – Sport models Available in Black with Grey highlight, Magma Red with Grey highlight, Mocha or Oyster with Grey highlight	PD	○	-	-	○	-	£1,150
– M Sport models Available in Black with Blue highlight, Black with Grey highlight, Magma Red with Grey highlight, Mocha or Oyster with Grey highlight		-	●	-	●	-	Std
– M235i xDrive models Available in Black with Grey highlight or Magma Red with Grey highlight		-	-	○	-	-	£800
Trigon cloth / Alcantara Anthracite	HL	-	-	●	-	-	Std

INTERIOR TRIMS

Illuminated Berlin	4P3	●	○	○	●	○	£0
Illuminated Boston	4P2	-	●	●	-	●	Std

TRANSMISSIONS

Dual-clutch automatic transmission	2TF	○	○	-	-	-	£1,350
Sport automatic transmission with gearshift paddles	2TB	-	-	●	●	●	Std

	218i Sport	218i M Sport	M235i xDrive	220d Sport	220d M Sport	Price
---	------------	--------------	--------------	------------	--------------	-------

STEERING AND CHASSIS

Adaptive suspension Not with 19" alloy wheels	223	-	-	○	-	-	£500
M Sports steering	2VE	-	●	●	-	●	Std
M Sport suspension	704	-	-	●	-	-	Std
Performance control	2VG	●	●	●	●	●	Std
Space-saver spare wheel <sup>2</sup>	300	○	○	-	○	○	£150

EXTERIOR EQUIPMENT

Comfort Access <sup>2</sup>	322	○	○	○	○	○	£500
Included in ZF2		○	○	○	○	○	n/a*
Exterior trim, High-gloss Shadowline	760	●	●	●	●	●	Std
Towbar, detachable	235	○	○	-	○	○	£750


INTERIOR EQUIPMENT

Air conditioning, automatic with two-zone control	534	●	●	●	●	●	Std
Extended storage	493	●	●	●	●	●	Std
Headlining, Anthracite	775	-	●	●	-	●	Std
Lumbar support, driver and front passenger	488	○	○	○	○	○	£150
M Sport steering wheel	710	-	●	●	-	●	Std
M Sport seats	711	-	-	●	-	-	Std
Multi-function controls for steering wheel	249	●	●	●	●	●	Std
Panoramic glass sunroof	402	○	○	○	○	○	£1,000
Rear-view mirror, automatically dimming	431	●	●	●	●	●	Std
Seat adjustment – front, electric with driver memory	459	○	○	○	○	○	£750
Included in ZF2		○	○	○	○	○	n/a*
Only with ZF1 (Sport models)							
Sport seats, front	481	●	●	-	●	●	Std
Steering wheel heating	248	○	○	○	○	○	£150
Included with ZF2		○	○	○	○	○	n/a*
Through-loading system	465	●	●	●	●	●	Std
Sun protection glass	420	○	○	○	○	○	£300
Included in ZMA / ZMS		-	○	○	-	○	n/a*
Sport leather steering wheel, three-spoke	255	●	-	-	●	-	Std

Key  
● = Standard   ○ = Optional   - = Not available   <sup>1</sup> = Exclusively available on Sport models.   <sup>2</sup> = Exclusively available on M Sport and M235i xDrive models.

Key  
● = Standard   ○ = Optional   - = Not available   Only with = these options must be ordered together.   Not with = these options are not available for ordering together.  
\* = Exclusively available as part of a package, see page 19 for package information.   <sup>1</sup> = Space-saver spare wheel loses underfloor storage in boot and therefore reduces boot volume.   <sup>2</sup> = Digital key valid for one year.




							
	218i Sport	218i M Sport	M235i xDrive	220d Sport	220d M Sport	Price	

Packages provide an intelligent selection of individual options at a lower combined price, as well as contributing to the resale value of the vehicle. Further options can still be specified even when a package is chosen.

COMFORT PACK I	ZF1	○	-	-	○	-	£600
Comprises: – 430 Exterior mirrors – electrically folding with anti-dazzle – 494 Seat heating, front – 563 Extended lighting							
COMFORT PACK II	ZF2	○	○	○	○	○	£1,100
Comprises: – 248 Steering wheel heating – 322 Comfort Access – 459 Seat adjustment – front, electric with driver memory Only with ZF1 (Sport models)							
TECH PACK	ZT1	○	○	○	○	○	£1,500
Comprises: – 552 BMW Icon Adaptive LED Headlights – 5AC High-beam Assistant – 5DM Park Assist including Reversing Assist camera – 610 Head-up Display – 6NW Enhanced Bluetooth with wireless charging – 6WD WiFi hotspot preparation							
M SPORT PLUS PACK	ZMS	-	○	-	-	○	£2,200
Comprises: – 1Y2 18" M V-spoke style 554 M wheels, Orbit Grey – 2NH M Sport braking system <sup>1</sup> – 420 Sun protection glass – 4GQ M seat belts – 688 Loudspeaker system – harman/kardon – 754 M rear spoiler – 7M9 Extended High-gloss Shadowline							
M235i PLUS PACK	ZMA	-	-	○	-	-	£1,500
Comprises: – 1Y3 19" M V-spoke style 557 M wheels, Bicolour Cerium Grey Matt – 420 Sun protection glass – 688 Loudspeaker system – harman/kardon Alternative content: – 1RR 19" M Double-spoke style 552 M wheels, Bicolour Jet Black Not with 223							

Key  
● = Standard   ○ = Optional   - = Not available   Only with = these options must be ordered together.   Not with = these options are not available for ordering together.  
<sup>1</sup> = Only available with 1RN, 1RR and 1Y2 alloy wheels.

							
	218i Sport	218i M Sport	M235i xDrive	220d Sport	220d M Sport	Price	

SAFETY AND TECHNOLOGY

Active Cruise Control with 'Stop & Go' function Only with 2TB / 2TF Included in 5AS	5DF	○	○	○	○	○	n/a <sup>1</sup>
BMW Icon Adaptive LED Headlights Included in ZT1	552	○	○	○	○	○	£500
		○	○	○	○	○	n/a*
Cruise control with braking function	544	●	●	●	●	●	Std
Driving Assistant Comprises: – Approach Control and Pedestrian Warning with City Braking function – Front collision Warning with brake intervention – Lane Change Warning – Lane Departure Warning – Rear Collision Prevention – Rear Crossing-traffic Warning – Speed Limit Info Only with 2TB / 2TF + 5DF Only with ZF1 (Sport models)	5AS	○	○	○	○	○	£1,000
Head-up Display Included in ZT1	610	○	○	○	○	○	£750
		○	○	○	○	○	n/a*
High-beam Assistant Only with 552	5AC	○	○	○	○	○	n/a <sup>2</sup>
Larger fuel tank (50 litres)	1AG	○	○	●	●	●	£50
LED foglights, front	5A1	●	●	-	●	●	Std
LED headlights	5A2	●	●	●	●	●	Std
Park Distance Control (PDC), front and rear	508	●	●	●	●	●	Std
Park Assist Comprises: – Parking Assistant – Reversing Assistant – Lateral Parking aid – Reversing Assist camera Included in ZT1	5DM	○	○	○	○	○	£350
		○	○	○	○	○	n/a*
Rain sensor with automatic headlight activation	521	●	●	●	●	●	Std

Key  
● = Standard   ○ = Optional   - = Not available   / = Indicates 'or'   Only with = these options must be ordered together.   \* = Exclusively available as part of a package, see page 19 for package information.   <sup>1</sup> = Included within 5AS, Driving Assistant.   <sup>2</sup> = Included within 552, BMW Adaptive Icon LED Headlights.



							
		218i Sport		218i M Sport		M235i xDrive	
		220d Sport		220d M Sport			
							Price

AUDIO AND COMMUNICATION

BMW Emergency Call <sup>1</sup>	6AF	●	●	●	●	●	Std
BMW Gesture Control Only with 6U3	6U8	○	○	○	○	○	£300
BMW Live Cockpit Plus Comprises: – 8.8" Touch Display – BMW Navigation system – BMW iDrive 6 System (iD6) – iDrive controller with Touch Function Further information can be found on pages 15-16	6U2	●	-	-	●	-	Std
BMW Live Cockpit Professional Comprises: – 10.25" Control Display with Touch Functionality – 10.25" Digital Instrument Display – BMW Intelligent Personal Assistant <sup>2</sup> – BMW Operating System 7.0 – iDrive Controller with Touch Function – Intelligent Functionalities <sup>2</sup> – Remote Software Upgrade <sup>2</sup> Further information can be found on pages 15-16	6U3	○	-	-	○	-	£1,000
BMW Online Services <sup>2,3</sup> – BMW Apps – BMW Connected <sup>4</sup> – BMW Online Services – Intelligent Voice Control – USB and Over-the-air Map Updates	6AK	●	●	●	●	●	Std
BMW TeleServices <sup>1</sup>	6AE	●	●	●	●	●	Std
Connected Package Plus Comprises: – Apple CarPlay <sup>1,5</sup> – Concierge Services <sup>2,3</sup> – Real Time Traffic Information <sup>2,3</sup> – Remote Services <sup>3</sup> Further information can be found on pages 15-16	6C2	●	-	-	●	-	Std
Connected Package Professional Comprises the full functionality of Connected Package Plus (6C2), plus: – Connected Music <sup>2,3</sup> – Connected Navigation <sup>2,3</sup> – Connected Parking <sup>2,3</sup> – Connected Teaser <sup>6,7</sup> – In-Car Experiences Further information can be found on pages 15-16	6C4	-	●	●	-	●	Std
DAB tuner	654	●	●	●	●	●	Std
Enhanced Bluetooth with wireless charging Included in ZT1 Only with 6WD	6NW	○	○	○	○	○	£350
Loudspeaker system – harman/kardon Included in ZMA Only with 6U3	688	○	○	○	○	○	£750
WiFi hotspot preparation <sup>9</sup> Only with 6NW	6WD	○	○	○	○	○	n/a*
							£0

Key  
● = Standard   ○ = Optional   - = Not available   Only with = these options must be ordered together.   \* = Exclusively available as part of a package, see page 19 for package information.  
<sup>1</sup> = Available and active without runtime limitations. Usage cannot be guaranteed permanently due to potential future technical developments (of the Service availability and/or Smartphone compatibility/operating systems).   <sup>2</sup> = Active for 3 years, renewable thereafter at an additional cost.   <sup>3</sup> = Requires a free BMW ConnectedDrive account.   <sup>4</sup> = BMW Connected+ is currently only available on vehicles equipped with 6U2, BMW Live Cockpit Plus.   <sup>5</sup> = Functions using a data connection will use data from the SIM card in the iPhone®. Additional data charges may be applied by the mobile network provider. Compatibility and functions may vary due to the model year of the iPhone® and the version of software installed on it.   <sup>6</sup> = Includes BMW Music. For further details please refer to pages 15-16.   <sup>7</sup> = Available and active for three months. Can be extended or renewed thereafter at an extra cost.   <sup>8</sup> = Part of 6U3.   <sup>9</sup> = Data subscription costs apply and must be purchased separately.

							
		218i Sport		218i M Sport		M235i xDrive	
		220d Sport		220d M Sport			
							Price

LIGHT ALLOY WHEELS

17" Double-spoke style 549, Orbit Grey	26M	●	-	-	●	-	Std
17" Double-spoke style 548, Bicolour Orbit Grey	1UP	○	-	-	○	-	£175
18" Multi-spoke style 488 Bicolour Orbit Grey	1L2	○	-	-	○	-	£595
18" M Double-spoke style 819 M, Orbit Grey	1RL	-	●	-	-	●	Std
18" M V-spoke style 554 M, Orbit Grey Only with ZMS	1Y2	-	○	-	-	○	n/a*
18" M Double-spoke style 556 M, Bicolour Cerium Grey Matt	1RN	-	-	●	-	-	Std
19" M Double-spoke style 552 M, Bicolour Jet Black Only with ZMS / ZMA	1RR	-	○	-	-	○	£595
19" M V-spoke style 557 M, Bicolour Cerium Grey Matt Only with ZMA	1Y3	-	-	○	-	-	n/a*



17" Double-spoke style 549, Orbit Grey



17" Double-spoke style 548, Bicolour Orbit Grey



18" Multi-spoke style 488 Bicolour Orbit Grey



18" M Double-spoke style 819 M, Orbit Grey



18" M V-spoke style 554 M, Orbit Grey



18" M Double-spoke style 556 M, Bicolour Cerium Grey Matt



19" M Double-spoke style 552 M, Bicolour Jet Black



19" M V-spoke style 557 M, Bicolour Cerium Grey Matt



# BMW PAY MONTHLY SERVICING & TRACKSTAR.

## SERVICING MADE SIMPLE.

Planning for the road ahead has never been easier. With the BMW Pay Monthly Service Plan<sup>1</sup> you can remove the uncertainty often associated with car servicing costs by spreading them monthly, much like you would your household bills. Our Pay Monthly service plan covers two services and any unused credit can be transferred to another BMW if you decide to switch unexpectedly. As part of the Pay Monthly plan you will also receive a number of added extras including:

- Fluid top ups
- An MOT
- A Wash & Vac each time you visit
- Seasonal health checks
- Sat Nav Map updates

Get the quality service and parts you expect from BMW with a fixed monthly payment. Give your BMW the care and attention it deserves from the experts that made it.

**Price: £20 per month for 36 months**

Please contact your preferred BMW Centre for further information.

## BMW TRACKSTAR.

Locate and recover your vehicle if it is stolen with BMW Trackstar or BMW Trackstar Advance. Benefits include:

- 24/7 Trackstar Monitoring Centre
- Thatcham accredited
- Integrated motion sensor
- Pan-European protection

**BMW Trackstar S7 price from: £399<sup>2</sup>**

**BMW Trackstar S5 price from: £549<sup>2</sup>**

**BMW Trackstar S5 Advance price from: £649<sup>2</sup>**



<sup>1</sup> = Participating Retailers only. Two services must be claimed within four years or 40,000 miles, whichever occurs soonest. <sup>2</sup> = Price excludes subscription. Please consult your preferred BMW Centre for further details. Content correct at time of going to print. Prices subject to change.



GLOSSARY.

1AG	Larger fuel tank (50 litres)	494	Seat heating, front	6C4	Connected Package Professional
223	Adaptive suspension	4GQ	M seat belts	6NW	Enhanced Bluetooth with wireless charging
235	Towbar, detachable	4P2	Interior trim, Illuminated Boston	6U2	BMW Live Cockpit Plus
248	Steering wheel heating	4P3	Interior trim, Illuminated Berlin	6U3	BMW Live Cockpit Professional
249	Multi-function controls for steering wheel	508	Park Distance Control (PDC), front and rear	6U8	BMW Gesture Control
255	Sport leather steering wheel, three-spoke	521	Rain sensor with automatic headlight activation	6WD	WiFi Hotspot preparation
2NH	M Sport braking system	534	Air conditioning, automatic with two-zone control	704	M Sport suspension
2TB	Sport automatic transmission	544	Cruise control with braking function	710	M Sport steering wheel
2TF	Dual-clutch automatic transmission	552	BMW Icon Adaptive LED Headlights	711	M Sport seats
2VE	M Sport steering	563	Extended lighting	754	M rear spoiler
2VG	Performance control	5A1	LED foglights, front	760	Exterior trim, High-gloss Shadowline
300	Space-saver spare wheel	5A2	LED headlights	775	Headlining, Anthracite
322	Comfort Access	5AC	High-beam Assistant	HL	Trigon cloth / Alcantara Anthracite upholstery
402	Panoramic glass sunroof	5AS	Driving Assistant	KF	Nivala cloth / Sensatec upholstery
420	Sun protection glass	5DF	Active Cruise Control with ‘Stop & Go’ function	PD	Dakota leather upholstery
430	Exterior mirrors – folding, with anti-dazzle	5DM	Park Assist	Ind	BMW Individual paintwork
431	Rear-view mirror, automatically dimming	610	Head-up Display	met	Metallic paintwork
459	Seat adjustment – front, electric with driver memory	654	DAB digital radio	uni	Non-metallic paintwork
465	Through-loading system	688	Loudspeaker system – harman/ kardon	ZF1	Comfort pack I
481	Sports seats, front	6AE	BMW TeleServices	ZF2	Comfort pack II
488	Lumbar support, driver and front passenger	6AF	BMW Emergency Call	ZMA	M235i Plus pack
493	Extended storage	6AK	BMW Online Services	ZMS	M Sport Plus pack
		6C2	Connected Package Plus	ZT1	Tech pack

TERMS AND CONDITIONS.

BMW ConnectedDrive keeps driver and vehicle connected with the outside world. Digital services, driver-focused technologies and driver assistance systems provide more comfort, more entertainment and more safety. Increase your driving pleasure – with BMW ConnectedDrive.

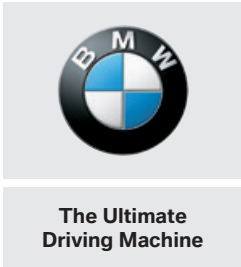
For further information on BMW ConnectedDrive and the General Terms and Conditions of Service for ConnectedDrive, please see: [www.bmw.co.uk/connecteddrive-information](http://www.bmw.co.uk/connecteddrive-information)

The BMW ConnectedDrive Hotline is available on: +44 (0) 800 561 0555 from Monday to Friday 8am – 7pm and Saturday to Sunday 9am – 5pm.



GENERAL INFORMATION	
BMW (UK) Ltd, Summit ONE, Summit Avenue, Farnborough, Hampshire, GU14 0FB (hereinafter referred to as “BMW”) provides the customer with certain vehicle-related information and assistance functions (hereinafter called “Services”) under the name of “BMW ConnectedDrive”. BMW collects, stores or processes car-related data in compliance with applicable law and only to the extent necessary to provide the Services. BMW does not collect, store or process personal data in course of the Services – except where this is explicitly stated in the service description of the individual Services. In the case of Services that require personal data to be collected, stored and processed so that such Services can actually be provided, BMW informs customers of this in advance by providing this data protection notice The Services are provided by means of a SIM card installed in the vehicle.	
CONNECTED DRIVE SERVICES DURATION	
BMW Music	3 month trial
Apps	3 years
BMW Connected+	3 years
BMW Intelligent Personal Assistant	3 years
BMW Online Services	3 years
Concierge Services	3 years
Connected Music	3 years
Connected Navigation	3 years
Connected Parking	3 years
In-Car Experiences	3 years
Intelligent Functionalities	3 years
Intelligent Voice Control	3 years
Map Updates	3 years
Real Time Traffic Information	3 years
Remote Services	3 years
Remote Software Upgrade	3 years
Apple CarPlay® Preparation	Active without runtime limitations
BMW Emergency Call	Active without runtime limitations
BMW TeleServices	Active without runtime limitations
DEACTIVATION	
You can have the BMW ConnectedDrive services deactivated through an authorized BMW centre, a BMW subsidiary or a BMW authorised workshop at any time. This also has the consequence that aspects of the emergency call in the vehicle as well as all remaining Services will no longer function. You can additionally arrange for the remaining Services to be deactivated via “My BMW ConnectedDrive”.	
If the vehicle is equipped with the legally required EU Emergency Call (as from April 2018) a deactivation of the BMW ConnectedDrive basic services will not deactivate the vehicle’s built-in SIM card. It has to remain active, so that the EU Emergency Call is functional all the time.	
Services that are available and active without runtime limitations, cannot be guaranteed for permanent usage due to potential future technical developments (of the Service availability and/or Smartphone compatibility/operating systems).	





More about BMW  
Tel. 0800 325 600  
[www.bmw.co.uk](http://www.bmw.co.uk)

Valid from December 2019.